

The 500 Year Ice Hurricane Over Iceland

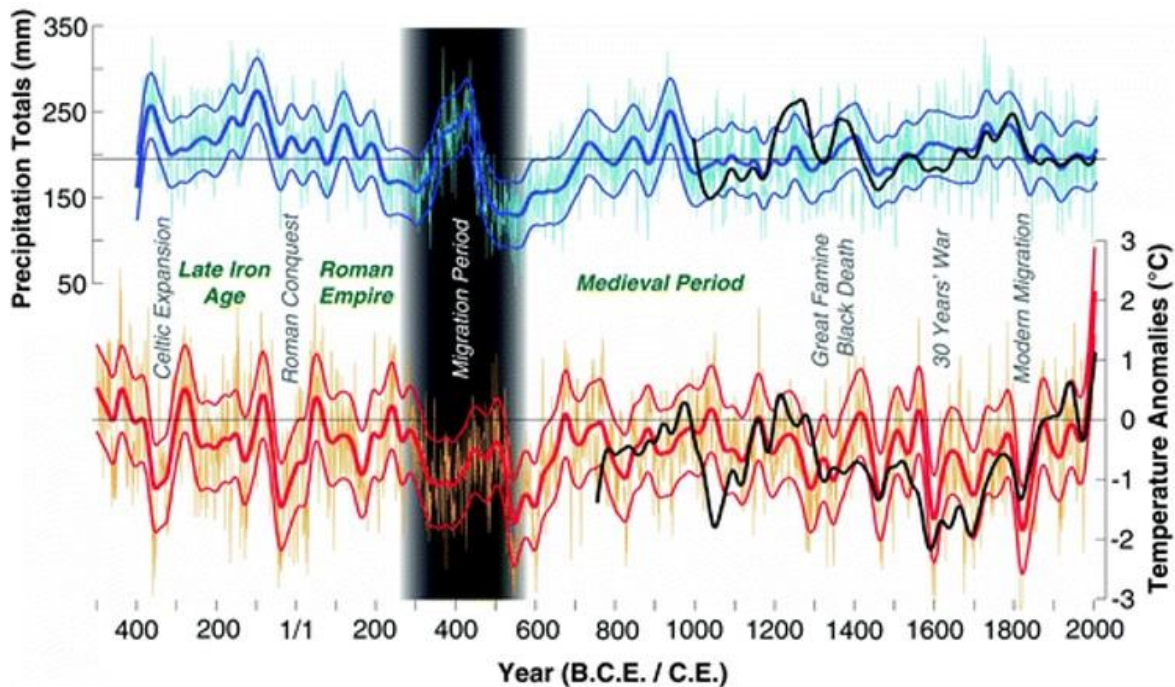


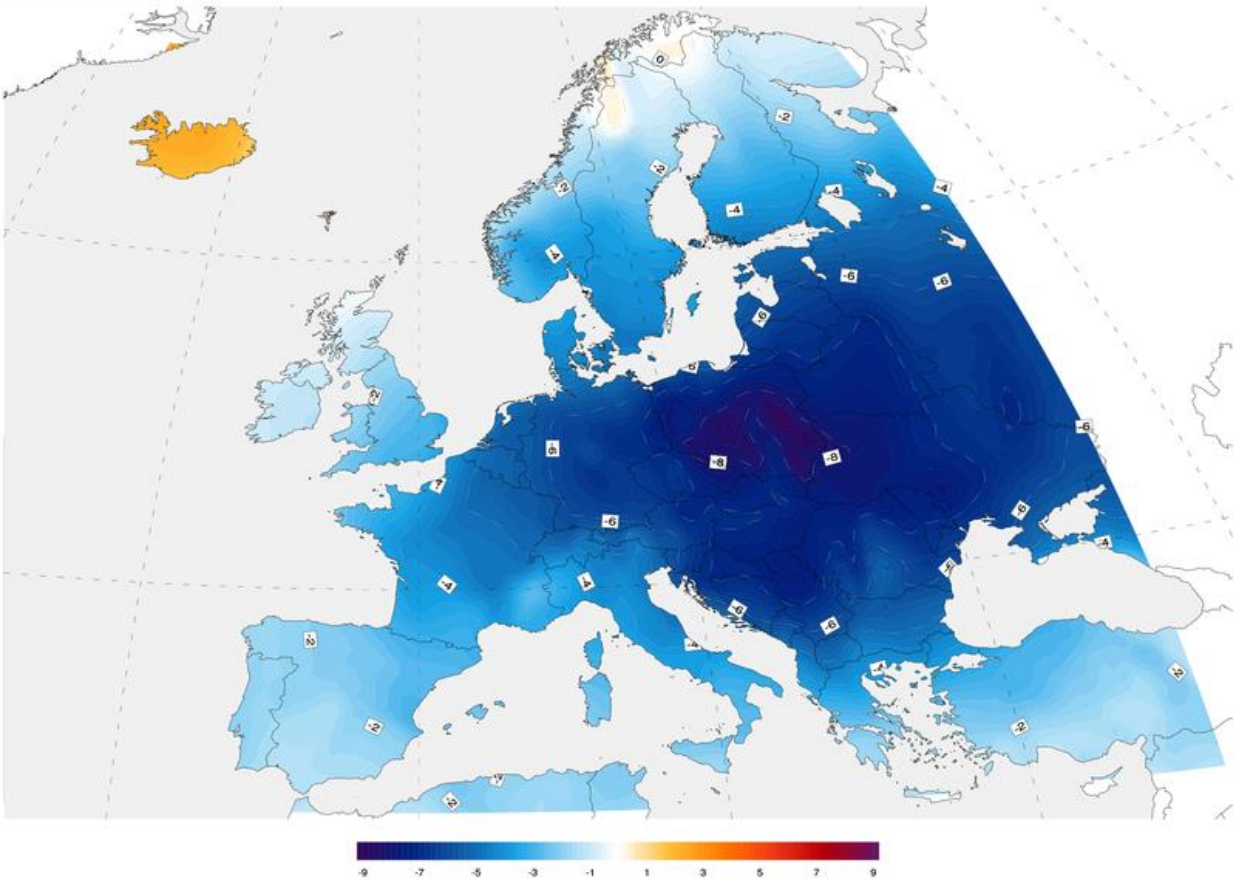
Fig. 3.1

Reconstructed April–June (AMJ) precipitation totals (*top*) and summer (June–August) temperature anomalies (*bottom*) for central Europe with respect to 1901–2000.

Looking closely at April, May and June temperature with precipitation, that black bar in the chart should be a flag. That signals a population migration period. When the climate gets incredibly wet and winter gets brutally cold, people migrate because there is not enough food being grown and the basic cost of living increases too rapidly.

So, this is the signal that you should look for in a climate event or sets of climate events beginning to manifest in the 2020's, because this would signal if people are going to move in great numbers. We might as well be at the very edge of that black bar in 400 A.D, if not at the middle; because we have been mimicking several things from the past.

1708/1709 Winter Temperature Anomaly



If we look at the 1708 and 1709 winter temperature anomaly reconstruction map, we can see how cold it really was in France. Look how the Adriatic and Bulgaria got cold, then look over in Russia with very dark blue and massive temperature drops. Over to the west, where the super-light blue and France is, historians talked about conditions that wiped out agriculture and societies, which included villages and towns in those areas. So how was it further east?

Enter the Ice Hurricane that no mainstream media outlet wanted to touch, because this was so far out of bounds of anything global warming, they could not even spin this to make it a CO2 event, so main stream media outlets avoided talking about it.

Report published by *Severe Weather EU*. Violent winter storm is ripping across Iceland, and they are looking at 250 km/hour gust that's about 150 mph.

Severe Weather Europe

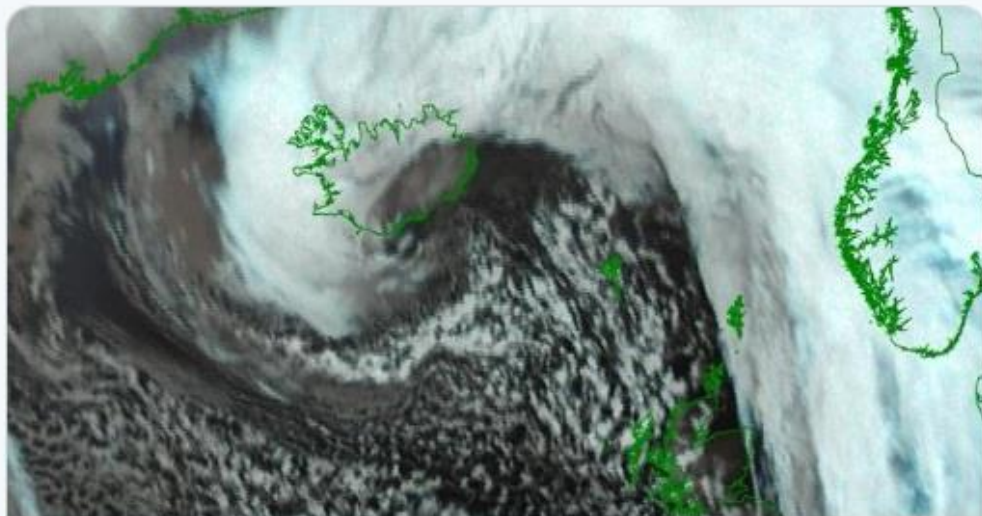
Violent winter storm across Iceland is underway, intense snowfall (N Iceland) and 150-190 km/h gusts (W-NW Iceland) – conditions worsening tonight with close to **250 km/h gusts** in SE parts of Iceland tomorrow

These gust were accompanied by seven foot snowfalls. The cyclonic spin and ultimate gust were 256 km/hour, which is about 152 mph, with sustained winds is around 120 mph. Silence as snow was supposed to be a thing of the past according to the Inconvenient Truth.



severe-weather.EU @severeweatherEU · 1h

Remembering the monster cyclone over Iceland early this week, violent winds up to 256 km/h and major snowstorm verified! most of the Icelandic roads were impassable!



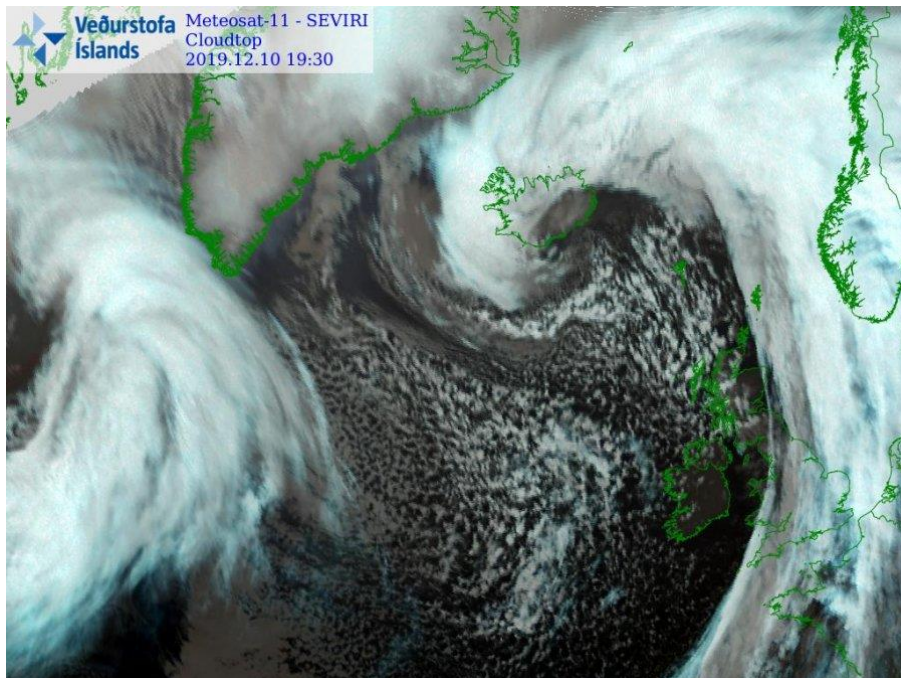
Violent winter storm across Iceland is underway, intense snowfall (N Icel...
-spread the word- Extremely windy conditions and life-threatening conditions are unfolding across the western half of Iceland and ...

severe-weather.eu

You can follow the storm track on this site, reaching Category III status, but this is an Ice Hurricane. So rare and unusual that it broke all records in Iceland for wind velocity and snowfall depths at this time of the year. The island has never had anything pegging at 250 km/hour, ever.



On top of that, 7-foot snowfall accumulations. This is so far beyond the bounds of shattering records that they needed to put new categories in charts and graphs that exist in Iceland's climate records for the month of December.

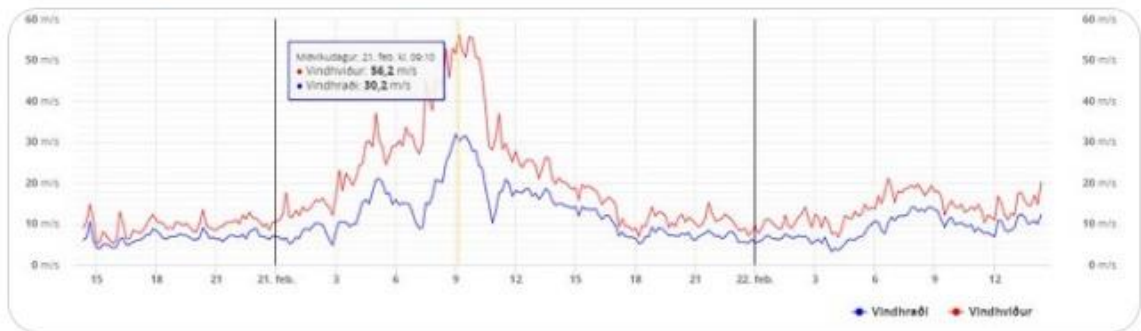


Iceland Magazine picked up the story as well, reporting hurricane winds with sustained winds of 114 mph. These would be the types of reports when a Category III hurricane lands in Florida, and a Category III typhoon makes landfall in the Philippines with exactly the same wind speeds.



Iceland Magazine @IcelandMag · Feb 23, 2018

Yesterday's crazy storm reached hurricane force on Ring Road in West Iceland! Top sustained windspeed in Central Highlands: 114 mph, a Category 3 Hurricane. #Iceland #WinterStorm #WinterIsHere #RingRoad icelandmag.is/article/windsp...

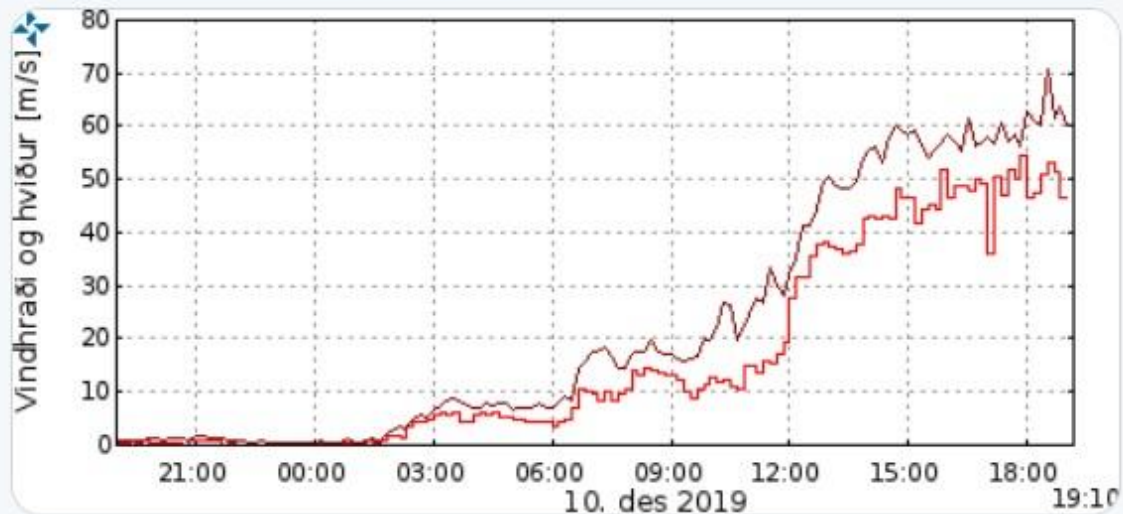


Southwestern Iceland seems to be the most battered spot with peaking winds. The country was paralyzed, because main roads were not passable.



Kairo Kiitsak @kairokiitsak · Dec 11

Wow! A 71 m/s (~256 km/h) gust were just measured in Skálafell, SW Iceland. Data: en.vedur.is #Iceland #storm



I have been reading news reports that stated every single road in the country was not passable. Look at those doors. How could you ever get out of those frozen doorways, then try to find your way into your car?



When you look at video during the storm, it is beyond incredible. I encourage you to visit the links I left at the end of this article. The twitter feeds with live videos looked like a hurricane, but with snow and ice blowing instead of rain.

The gusts are frightening to look at, even if it was just watching from a computer screen. If you are out there, you will be blown off your feet and will be frozen on the spot. It really, is so beyond the scope of realization.

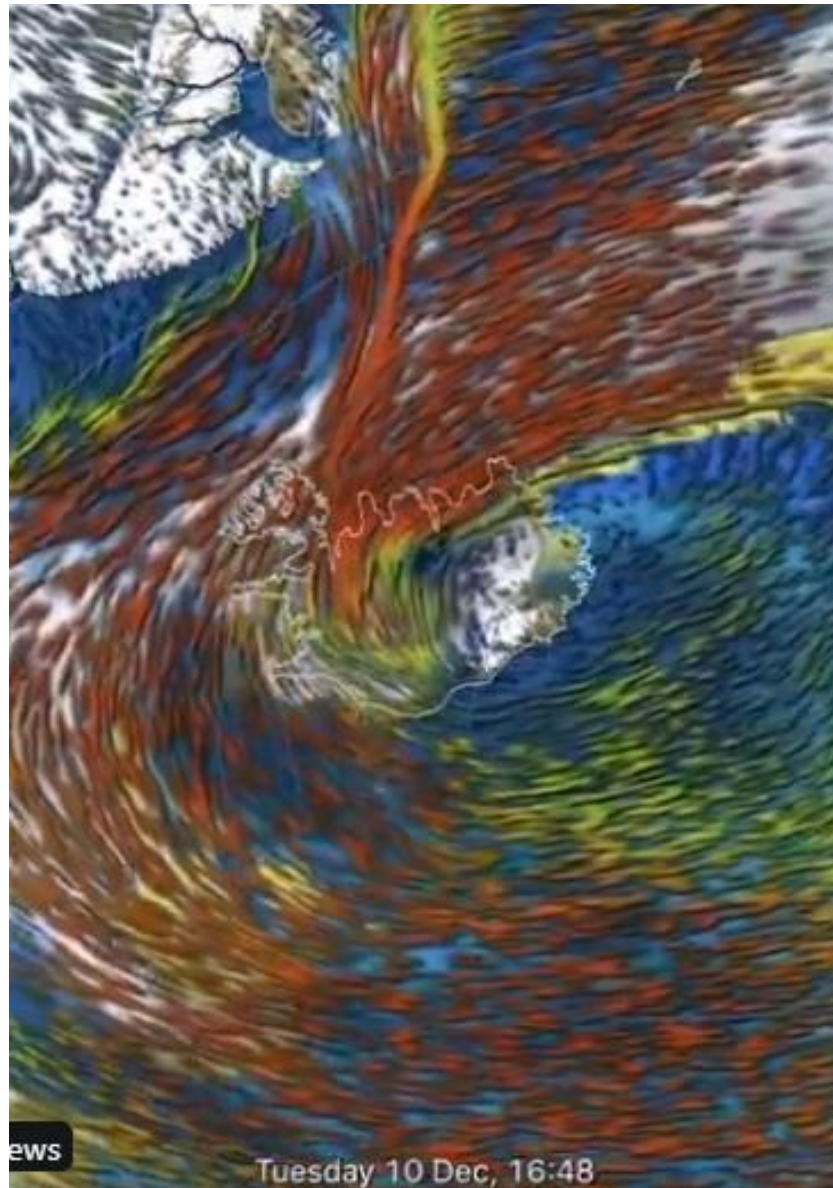




Anyhow, this is a glimpse of rooftops and trees being bent over by the icy sideways winds and another indication that residents of Iceland are going to be blocked in their homes for weeks.



Look at these different wind models. The hook and intensification were pulling Arctic air straight into what looks like a sink hole. The air vortices can be seen clearly.



Iceland has been going through these types of storms for centuries, so having a little stock of food, water, and firewood, these types of emergencies are normal there, but how about you?

This is an example of once in a 500-year event, so, how prepared are you for emergencies and events like this?

Thanks for reading, I hope you got something out of the article. If you like more content like this, I produce the tri-weekly Mini Ice Age Conversations podcast of a 30-minute in-depth analysis on the GSM you can take on-the-go through out your day.

*****Mini Ice Age Conversations Podcast*****

iTunes: <https://itunes.apple.com/us/podcast/a...>

Soundcloud: <https://soundcloud.com/adapt-2030>

Libsyn: <http://adapt2030.libsyn.com/>

(MIAC #257) Fake Corporate Greens Censoring Voices in the UK

<https://adapt2030.libsyn.com/miac-257...>

***** Climate Preparedness Channels *****

ADAPT 2030 Patreon www.patreon.com/adapt2030

ADAPT 2030 Subscribe Star www.subscribestar.com/adapt-2030

***** ADAPT 2030 Climate Revolution Book *****

Climate Revolution is a 'Must Read' for understanding our Sun driven climate as we progress deeper into the new Eddy Grand Solar Minimum. Weather extremes leading to Global food scarcity and high food prices are here now, and this book describes the expected changes, how to survive & thrive during future challenging times with practical preparations.

NEW ADAPT 2030 Climate Revolution

<https://payhip.com/b/3sVi/af5d15cc7ddd65e>

*****Support ADAPT 2030 by Visiting Our Sponsors*****

My Patriot Supply 2-Week Food Supply 92 servings

www.preparewithadapt2030.com

True Leaf Market Organic & Heirloom Seeds

[ADAPT 2030 True Leaf Market Link](#)

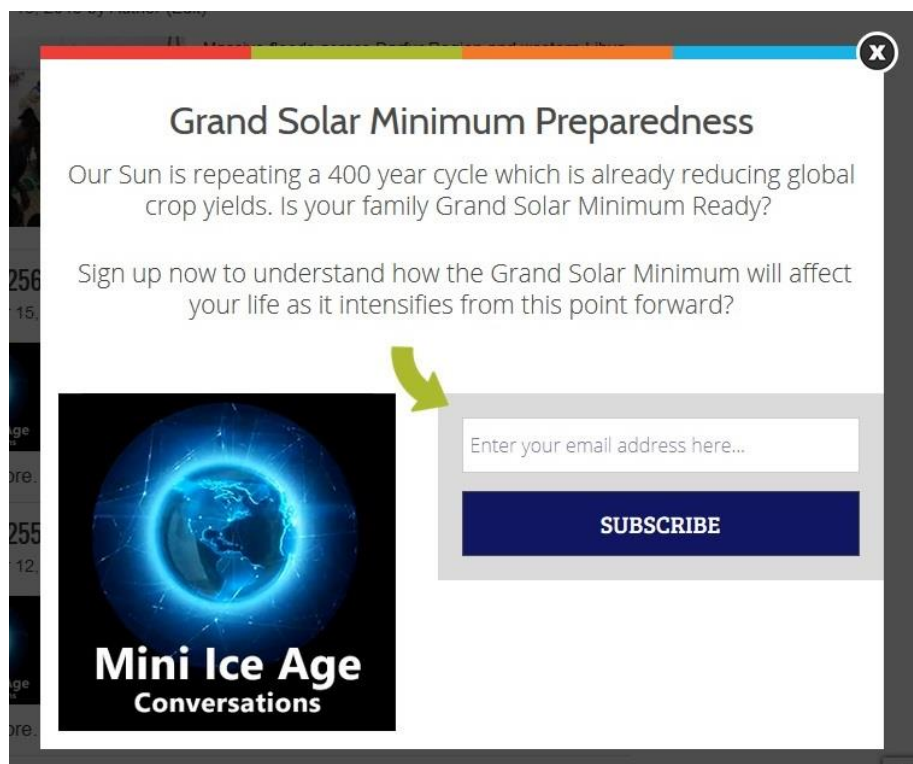
ADAPT 2030 Amazon Climate Preparedness Portal

<https://amzn.to/2Q8LqrV>

***** ADAPT 2030 Newsletter *****

For the ADAPT 2030 Grand Solar Minimum newsletter jump over to Oilseedcrops.org where you can enter your email and sign up. Move your mouse around for about 10 seconds and this box will pop up.

Join ADAPT 2030 NEWSLETTER <http://www.oilseedcrops.org>



Grand Solar Minimum Preparedness

Our Sun is repeating a 400 year cycle which is already reducing global crop yields. Is your family Grand Solar Minimum Ready?

Sign up now to understand how the Grand Solar Minimum will affect your life as it intensifies from this point forward?

Enter your email address here...

SUBSCRIBE

Mini Ice Age Conversations

*** Today's Story Links ***

1709: The year that Europe froze

<https://www.newscientist.com/article/...> <https://climatechangepsychology.blogs...>

A thousand-year record of temperature variations for Germany and Central Europe based on documentary data [https://www.academia.edu/14359500/A t...](https://www.academia.edu/14359500/A_t...)

Central European and regional fir TRW (Tree Ring Width) last 1000 years
<https://link.springer.com/chapter/10....>

White Out 18th-century painting from the Castello Sforzesco, Milan
<https://www.nationalgeographic.com/hi...>

1709 Temperature anomaly

[https://en.wikipedia.org/wiki/Great F...](https://en.wikipedia.org/wiki/Great_F...)

Iceland Blizzard and Winter Hurricane <https://twitter.com/search?q=iceland%...>

Violent winter storm across Iceland is underway, intense snowfall (N Iceland) and 150-190 km/h gusts

<https://www.severe-weather.eu/mcd/vio...>

Cyclone tracking wind speeds Iceland

<https://pbs.twimg.com/media/ELYoSXpXk...>

Iceland cyclone

<https://twitter.com/severeweatherEU/s...>

Iceland whiteout

<https://pbs.twimg.com/media/ELhHfVeXU...>

Iceland buried door

<https://pbs.twimg.com/media/ELh7Cz4Wo...>

Iceland trees bent in snow

https://pbs.twimg.com/media/ELh7Cz_X0...

USA winter forecasts

<https://twitter.com/RyanMaue>

Cold blast USA

<https://pbs.twimg.com/media/EK9M9w0Ws...>

***** ADAPT 2030 Social Media Links *****

YOUTUBE [ADAPT 2030 Mini Ice Age 2015–2035 Series on YouTube](#)

BITCHUTE <https://www.bitchute.com/hashtag/adapt2030/>

BRIGHTEON <https://www.brighteon.com/channel/adapt2030>

STEEM <https://steemit.com/@adapt2030>

MINDS <https://www.minds.com/ADAPT2030>

MEDIUM <https://medium.com/@globalcooling>

TWITTER <https://twitter.com/adapt2030>

GAB <https://gab.ai/ADAPT2030>