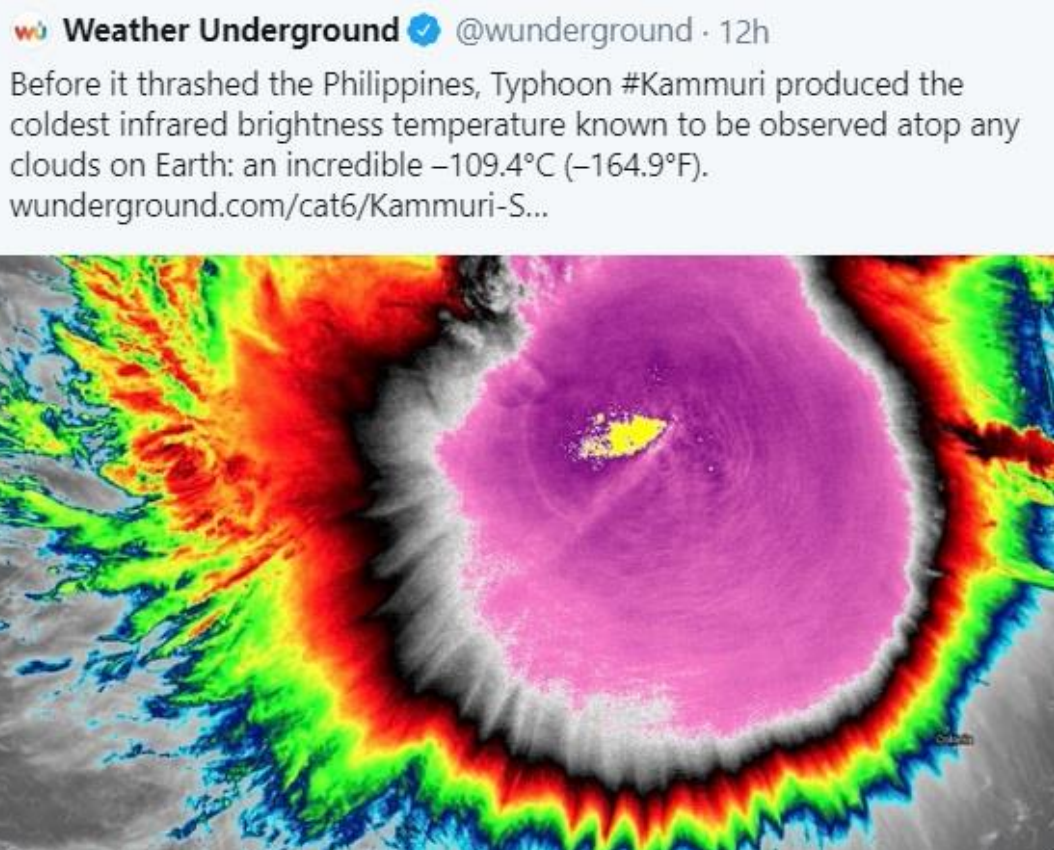


Unthinkably Rare Climate Events are the New Normal



Typhoon *Kammuri* passed over the Philippines and apparently, just before it made a landfall, the cloud tops were the coldest infrared brightness ever documented on our planet, at 164.9°F below zero. A very strange smudge right in the middle of the chart can be noticed, and it looks like a plume coming out.



The VIIRS infrared imaging satellite, which is maintained by the University of Wisconsin-Madison released this image. NOAA picked this up as well, along with the strange yellow striation.

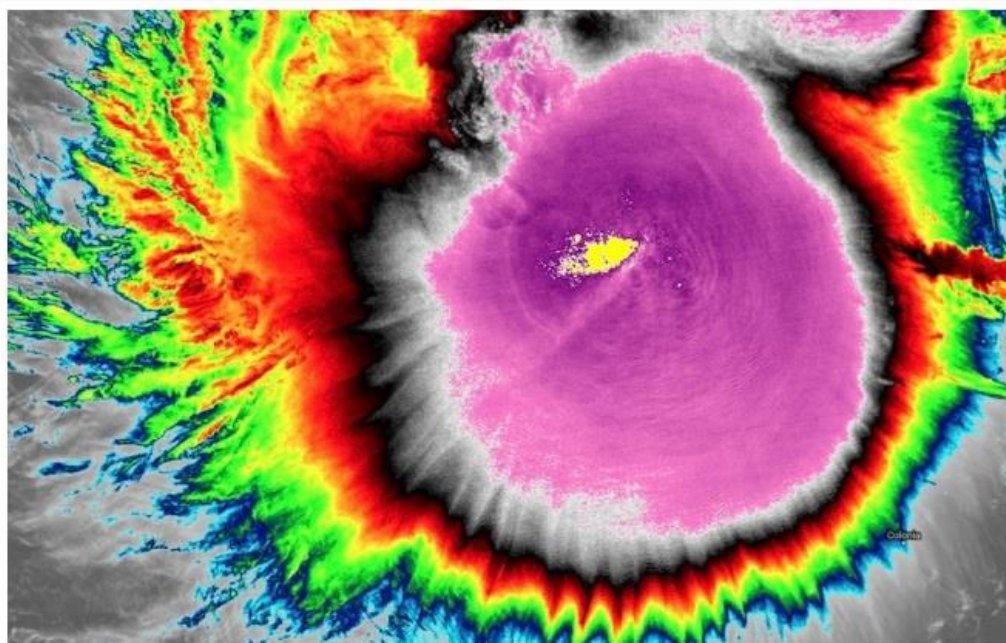
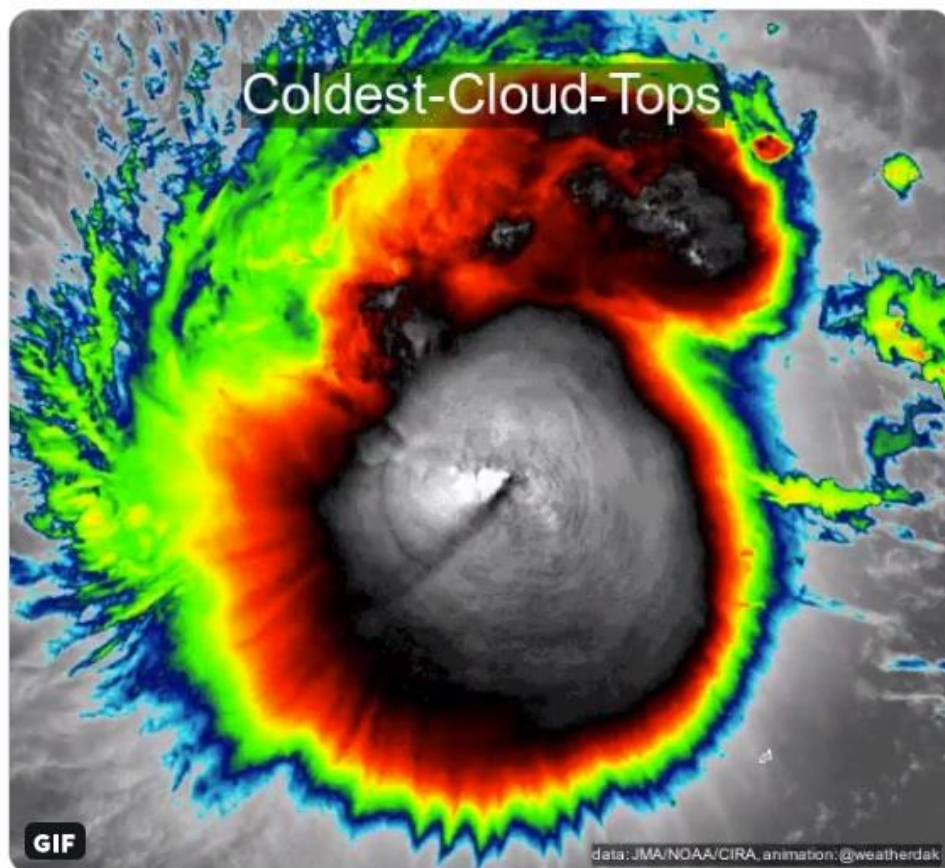
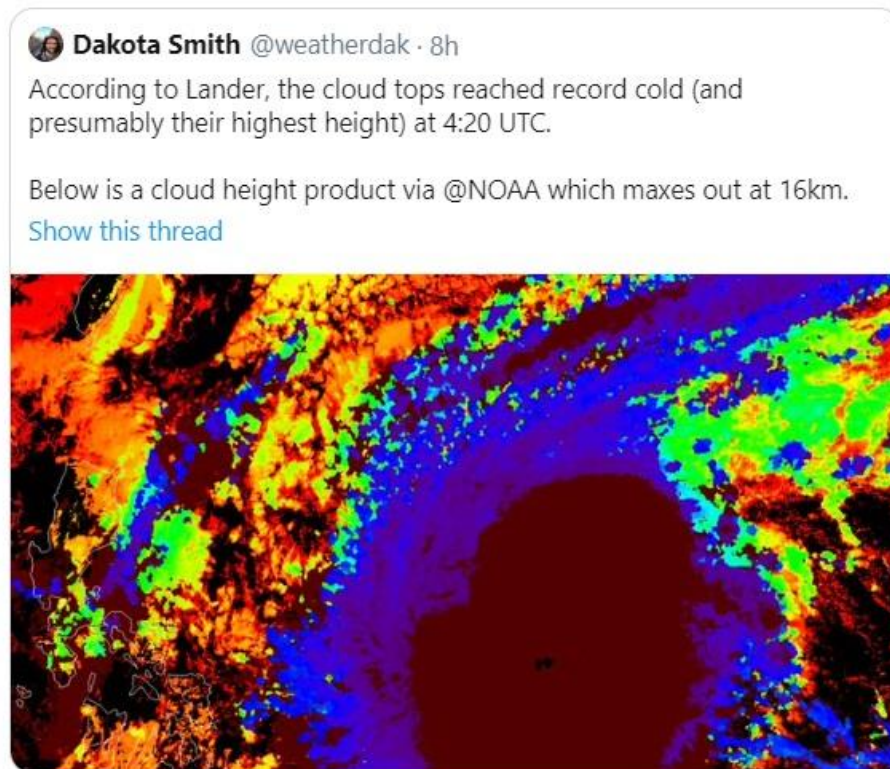


Figure 1. VIIRS infrared image of Typhoon Kammuri from the NOAA-20 satellite at 0420Z Saturday, November 30, 2019. Scott Bachmeier (CIMSS/SSEC/University of Wisconsin-Madison) manually added the yellow color just west of the center to denote the location of the coldest cloud tops, which had gone "off the scale" of the automatically generated color table. Image credit: Scott Bachmeier and SSEC RealEarth

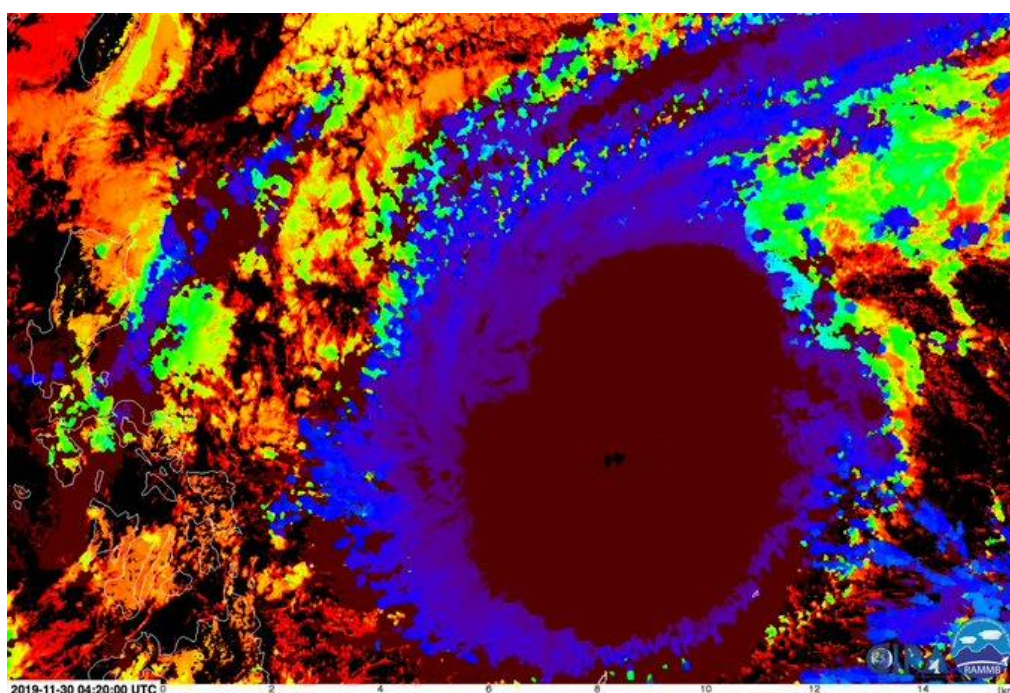
However, when observed at a different cloud brightness, it looked like an erupting volcano from the center, which is yet another unusual event.



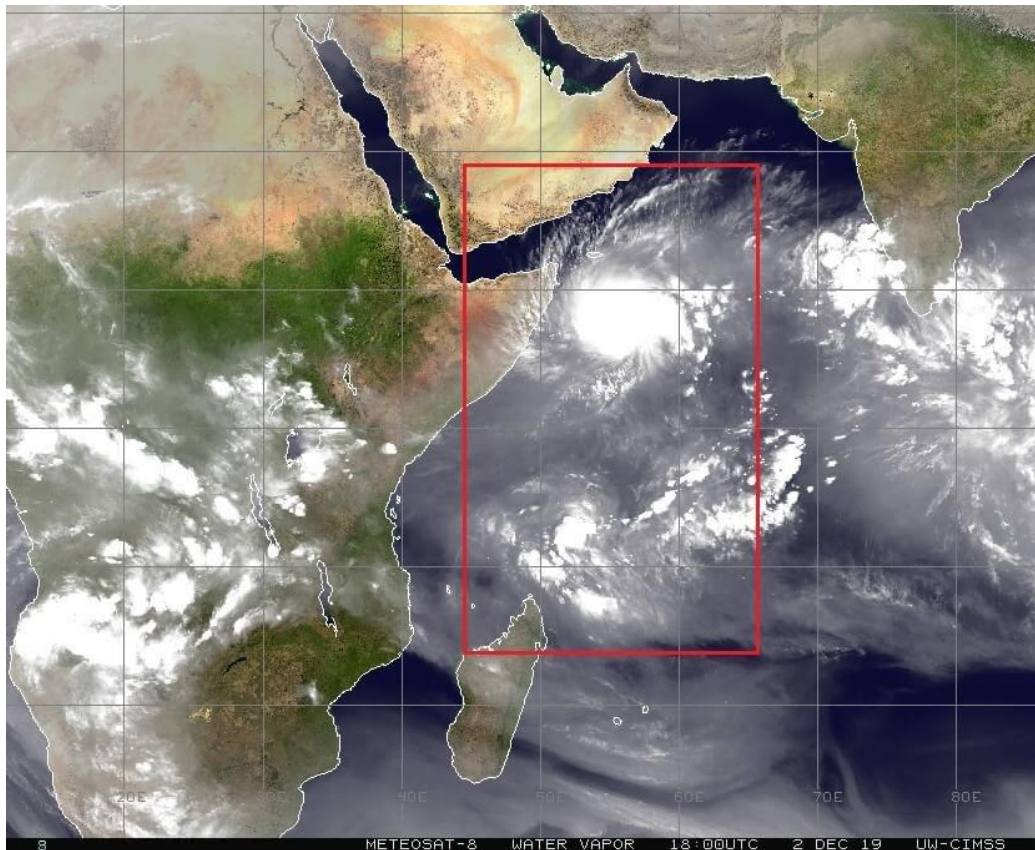
Moreover, the typhoon not only created the coldest cloud tops ever recorded, but also have the highest elevation. The column pushed through the stratosphere and the heights of these cloud tops could not even be measured because it broke the highest altitude available on the NOAA satellite. The maximum data set from NOAA is at 16 km, and this is literally off the charts in terms of how high clouds are reaching into the atmosphere.



This is, truly, unprecedented. The eye at the middle of the typhoon can be seen; and the word 'billowing' to describe the clouds surrounding it is still an understatement, as these are space-bound clouds.



Similarly, another unusual phenomenon in the atmosphere can be observed off the east coast of Africa, which is outlined by the red box. This image is put out by *Severe Weather, EU*.

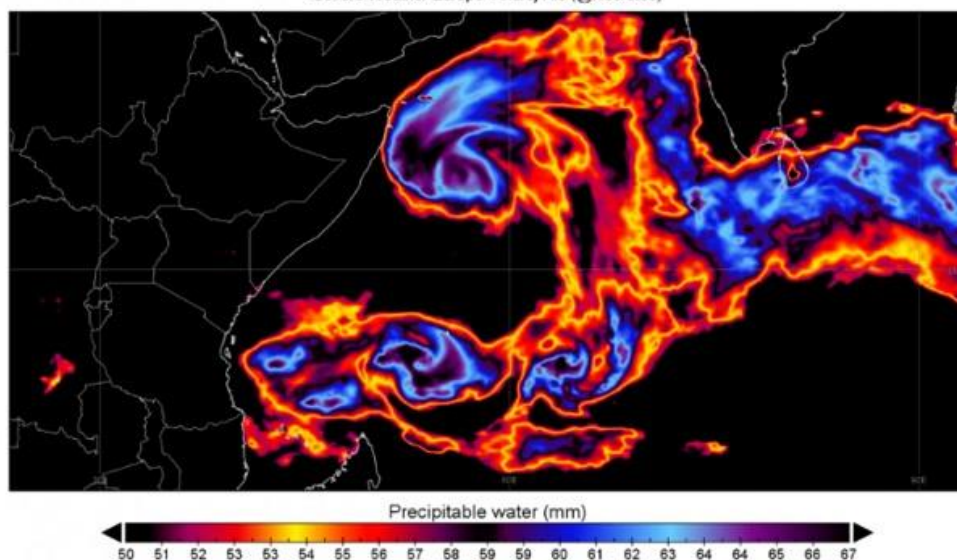


And on the precipitable water most interestingly, is that these cyclones are on different sides of the hemisphere.

Severe Weather Europe

A rare situation that we wrote about two days ago, is now developing further. Twin tropical systems will form in the western Indian ocean, on each side of the equator at the same time.

GFS 02/Dec 12z Forecast for 04/Dec 09z
Severe Weather Europe Andrej Flis (@Recretos)

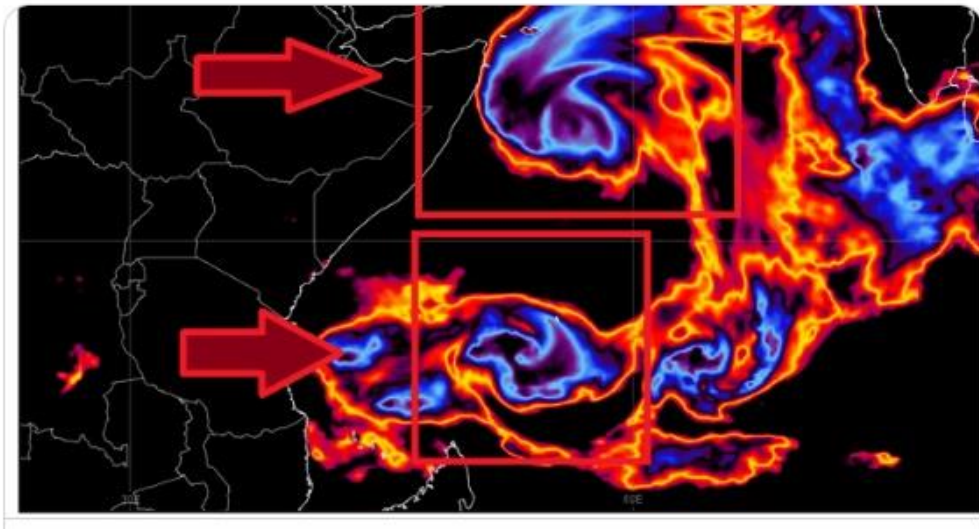


One is going clockwise and the other counterclockwise, which again, is very rare. So, it seems that rare is becoming the norm these days.



severe-weather.EU @severeweatherEU · 8h

Rare tropical event Update: Unusual twin tropical cyclones are about to form on both hemispheres, going face-to-face from both sides of the Equator. The south system will be off to a more slower start, but is likely to hit Madagascar as a hurricane!



To add to these strangeness, Mt. Shasta could set a world record for the largest snowfall ever recorded on our planet, reaching 18-feet in thickness in just four days. The event is still ongoing, and this could break the 1959 record if it will eclipse. They are then expecting a world record snowfall, yet again.



zero @Radio_Haidakhan · 9h

Mt. Shasta Could Set World **Record** For Largest **Snowfall** (18 Feet in 4 Days)



Mt. Shasta Could Set World Record For Largest Snowfall (18 Feet in 4 D...
Mount Shasta, California, home of the world record for a single dump
(189 inches in February 1959) is getting pounded by a storm of biblical ...
unofficialnetworks.com

France, as well, is experiencing massive and record-breaking snowfall this early in the season, and this is the 3rd time this has happened so far this in 2019, along with Austria, Italy and Spain.



WEATHER/ METEO WORLD @StormchaserUKEU · Dec 2

WOW...Very large snow accumulations in Val Thorens, France this evening first day of meteorological winter 1st of December! Report Val Thorens fB
[#severeweather](#) [#ExtremeWeather](#) [#snowfall](#)



Albany, New York likewise, digging out of an unusual one-foot snowfall. Photos of snow accumulations in Brooklyn Bridge and other locations are out across the net now.



The Voice of America ✓ @VOANews · 10h



Residents of Albany, New York, spent the morning digging out their vehicles, Monday, December 2, as a snowstorm threatens to dump 15 to 36 centimeters of snow on the region.



US Northeast Gets Its Turn with Messy Storm of Snow, Rain, Wind
voanews.com/usa/northeast-...



Ice Age Farmer put out this another unprecedented event: “Switzerland busts its all-time November's snow record set in 1959.” This same date is heard in the Shasta story, so this is another broken record from 1959. Now, are we repeating a cycle because there are lots of atmospheric activity that is being repeated from decades ago? If it is so, then it is not CO2, it is not you, it is the Sun.



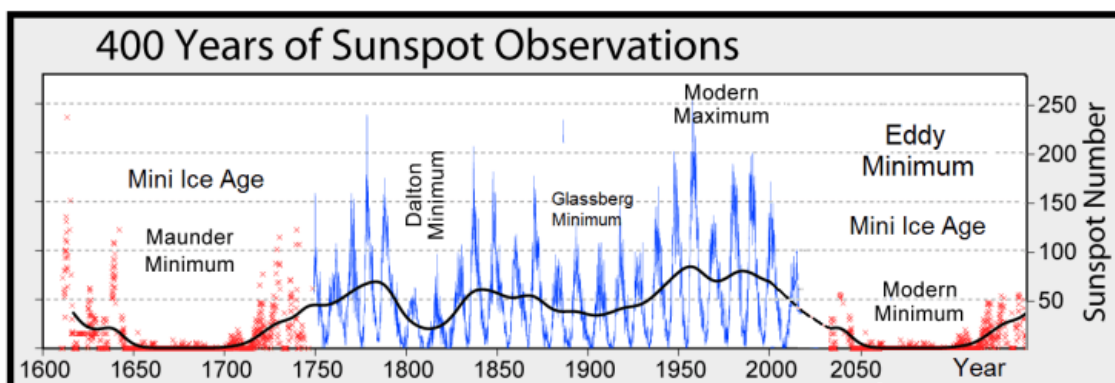
Ice Age Farmer ❄️🌱 (x) @IceAgeFarmer · Nov 25

Switzerland busts its all-time November **snowfall record** set back in 1959 -- Earth Changes -- [Sott.net](#)



Switzerland busts its all-time November snowfall record set back... Heavy, early-season snow has buried parts of the mountainous Central European nation of Switzerland, as reported by [www.swissinfo.ch](#) — the... [sott.net](#)

The presence of solar activity or lack thereof drives the cycles, thus, the Grand Solar Minimum is intensifying, but “experts” are still claiming that it is going to be the same solar cycle intensity as SC 24, but a lot of astrophysicists are saying otherwise for the new SC 25. The Sun’s activity is dropping off and has begun to affect our global agriculture, which will, in turn, affect the stability of our economy. Talking heads claiming that solar activity and the economy are stable, are just reassuring you, so that you continue to pay your taxes and the global populace remains unaware.



Meanwhile, Australia is officially on its 2nd day of summer, but summer snows are still blanketing areas across New South Wales, Victoria and Tasmania. Yet according to the Australian media, there is not a single mountain range where it could not snow at any time. 180 degrees opposite of the previous narrative of “It will never snow again and sell your ski resorts” seven years ago.



lenni @henri_lenni · Dec 3

It's Snowing In **Australia** Right Now...

Summer snow across NSW, VIC & Tasmania after the record longest ever ski season in the NSW [#SnowyMountains](#) at Perisher, they got 30cm [#snowfall](#) overnight. No sign of [#globalwarming](#) or [#climatestrike](#) greta. [#breaking](#)



Total whiteout at Perisher as snow covers ski fields

Perisher Ski Resort in New South Wales and the Hotham Alpine Resort in Victoria were blanketed in snow on Monday morning - a day after ...

[daily.co.uk](#)

These areas are disconnected by bodies of water, from Tasmania to Victoria, but it is still snowing across the southern part of Australia. large accumulations of a foot plus of summer snow burying Southeast Australia, is now being talked about by a lot of Aussie ski resort owners.



Electroverse @Electroversenet · Dec 2

HEAVY **SUMMER SNOW** BURIES PARTS OF SOUTHEAST **AUSTRALIA**

Many Aussie ski resorts have reported large accumulations of **summer snow** over the weekend and into Monday, as the [#GrandSolarMinimum](#) continues its intensification down-under:

electroverse.net/heavy-summer-s...



This is an 'impossible file', according to this tweet, of multiple locations in Victoria experiencing at least a foot, or 30 centimeters of snow cover in summer.



robert alexander

@r0to00



mel"k so one for the impossible file. looking at 30cm of snow
hotham alpine resort in australia's second day of summer. weird
polar vortex ~ "



♡ 1 11:32 AM - Dec 2, 2019



So, what happens to the experts in Australia saying that snow would be a thing of the past, that's Al Gore's famous statement from an Inconvenient Truth?



New South Wales blanketed in white after the heavy summer snowfall.



Snow depths on the ATV and on the benches.



Hotham @_hotham · Dec 1

The summer [#snow](#) won't stop! Temps down to -2.3°C with [#blizzard](#) like conditions. Amazing first day of summer in [#Australia](#) [#SnowReport](#) [#melbourneweather](#) [#Melbourne](#) [#melbweather](#)



Also, Hobart down in Tasmania have chilly summer days to stick around, Mount Wellington snow. That is affectionately Tazi, by the way.



CHILLY SUMMER DAYS TO STICK AROUND

Hobart residents woke up to a dusting of summer snow on kunanyi/Mt Wellington this morning – and the cold, wet and windy summer weather is set to continue.

Snow was sticking because it had been below freezing for several days in a row, and it kept getting colder. Tuesday was at -5 °C, which is about 25 °F.



Anthony Bergelin @Bergeonline · Nov 29

Apocalyptic catastrophic global heating is unstoppable in **Australia** as we head into **summer**. **Snow** forecast for the next 4 days! @JWSpy @dbirch214 @drwaheeduddin @AndyOz2

#ClimateEmergency



With all these extremely rare events, still very few people talking about the Grand Solar Minimum, which is the real threat to global crop yields. For instance, how do you think leaves are doing in Falls Creek that after they have already come out for the summer and are being refrozen again?



Sam Perry
@samskis1



20-30cms of snow has falls here in @Falls_Creek its starting to feel like Christmas. I may even go for a ski.... @abcnews



7 3:32 AM - Dec 2, 2019



Globally, the repercussions can be seen around the world, the low yields, low protein content food, and losses across the continents. On top of this, out of season snow continues blanketing ski fields in the Australian Alpine regions. The vegetation, smothered in snow.



So how prepared are you for emergencies as we move into the intensification of the Grand Solar Minimum? Thanks for reading, I hope you got something out of the article. If you like more content like this, I produce the tri-weekly Mini Ice Age Conversations podcast of a 30-minute in-depth analysis on the GSM you can take on the go through out your day.

*****Mini Ice Age Conversations Podcast*****

iTunes: <https://itunes.apple.com/us/podcast/a...>

Soundcloud: <https://soundcloud.com/adapt-2030>

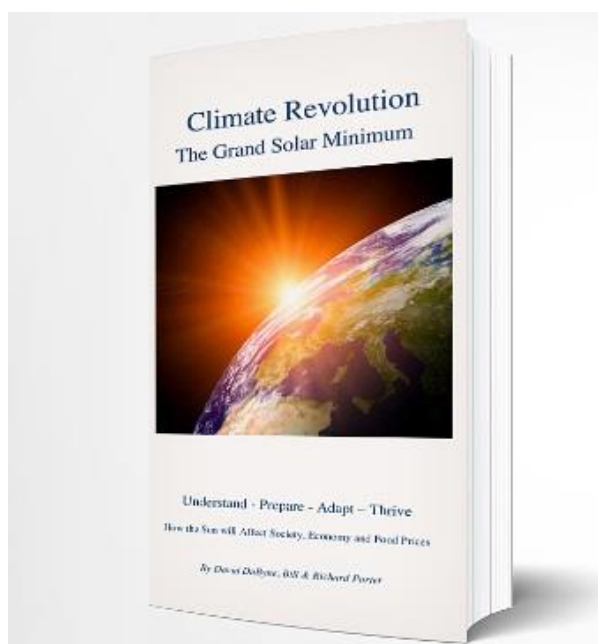
Libsyn: <http://adapt2030.libsyn.com/>

MIAC #253 Where is Our Food Going to Come from as We Move Forward?
<https://adapt2030.libsyn.com/miac-253...>

*****ADAPT 2030 Climate Preparedness Channels*****

ADAPT 2030 Patreon www.patreon.com/adapt2030

ADAPT 2030 Subscribe Star www.subscribestar.com/adapt-2030



Climate Revolution is a 'Must Read' for understanding our Sun driven climate as we progress deeper into the new Eddy Grand Solar Minimum. Weather extremes leading to Global food scarcity and high food prices are here now, and this book describes the expected changes, how to survive & thrive during future challenging times with practical preparations.

NEW ADAPT 2030 Climate Revolution

<https://payhip.com/b/3sVi/af5d15cc7ddd65e>

*****Support ADAPT 2030 by Visiting Our Sponsors*****

My Patriot Supply 2-Week Food Supply 92 servings

www.preparewithadapt2030.com

True Leaf Market Organic & Heirloom Seeds

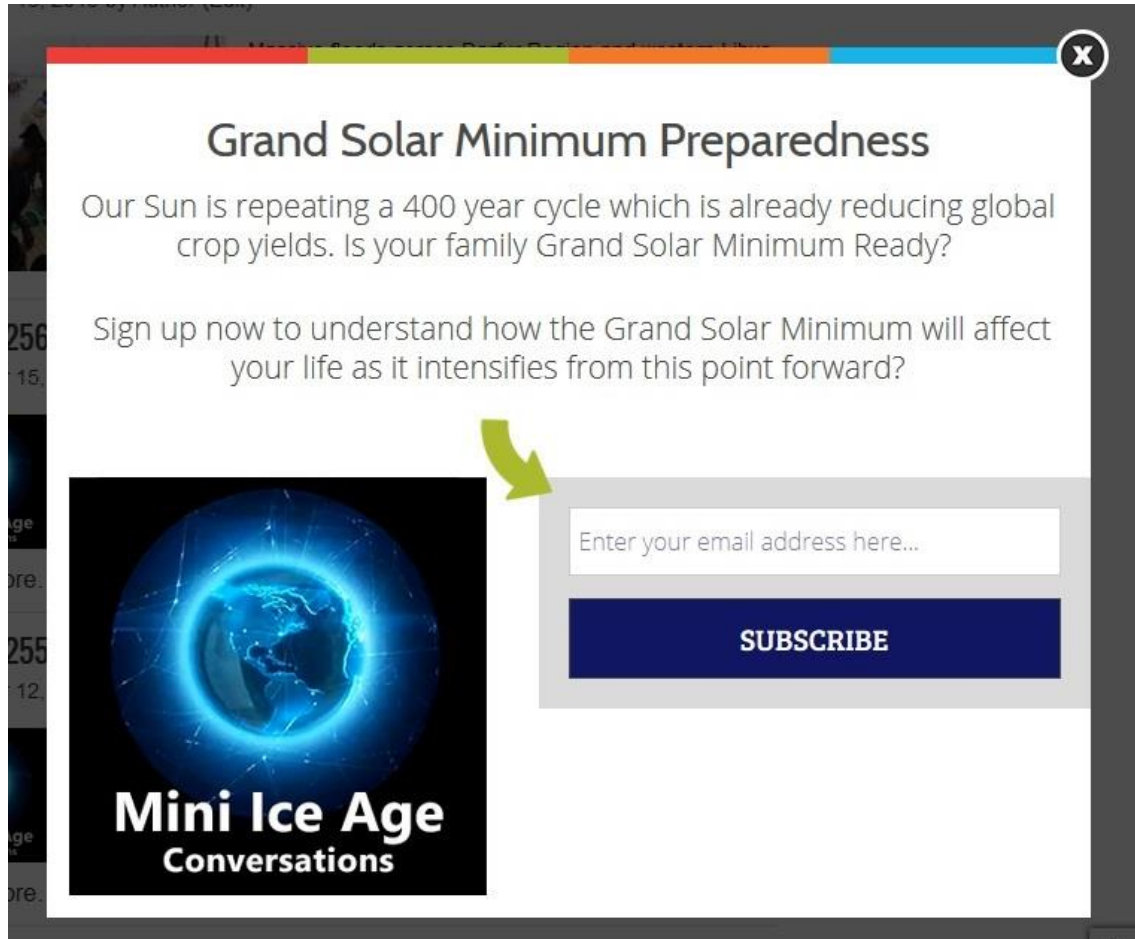
[ADAPT 2030 True Leaf Market Link](#)

ADAPT 2030 Amazon Climate Preparedness Portal

<https://amzn.to/2Q8LqrV>

For the ADAPT 2030 Grand Solar Minimum newsletter jump over to Oilseedcrops.org where you can enter your email and sign up. Move your mouse around for about 10 seconds and this box will pop up.

Join ADAPT 2030 NEWSLETTER <http://www.oilseedcrops.org>



Grand Solar Minimum Preparedness

Our Sun is repeating a 400 year cycle which is already reducing global crop yields. Is your family Grand Solar Minimum Ready?

Sign up now to understand how the Grand Solar Minimum will affect your life as it intensifies from this point forward?

Mini Ice Age Conversations

Enter your email address here...

SUBSCRIBE

Today's Story Links

Unusual twin tropical cyclones are about to form, going face to face on both sides of the Equator

<https://www.severe-weather.eu/tropical-weather/update-rare-twin-cyclone-equator-madagascar-fa/>

Precipitable water double tropical cyclones east coast Africa

https://pbs.twimg.com/card_img/1200930830094389249/98mLBxzt?format=jpg&name=small Typhoon Kammuri coldest clouds ever measured atop a typhoon over Philippines

<https://twitter.com/wunderground/status/1201932821482242048>

<https://www.wunderground.com/cat6/Kammuri-Sweeps-Through-Philippines-Coldest-Cloud-Tops-On-Record>

Cloud Height Typhoon Kammuri maxed out NOAA measurements

<https://pbs.twimg.com/media/EK5aDeIU0AAV-Vn?format=jpg&name=small>

Heavy Summer Snow Buries parts of South East Australia

<https://electroverse.net/heavy-summer-snow-buries-parts-of-southeast-australia/>

Summer snow Australia NSW, Victoria and Tasmania

https://twitter.com/search?q=summer%20snow%20australia&src=typed_query

Snow flurries and bushfires as contrasting weather bears down at the start of summer

<https://www.news.com.au/technology/environment/snow-flurries-and-bushfires-as-contrasting-weather-bears-down-at-the-start-of-summer/news-story/63329a7e8a807ae1601f219b5355c389?from=rss-flipboard>

Hobart Summer Snow

<https://pbs.twimg.com/media/EK0drx6W4AApMCQ?format=png&name=small>

Record snowfall globally

https://twitter.com/search?q=record%20snowfall&src=typed_query

*** ADAPT 2030 Social Media Links ***

YOUTUBE [ADAPT 2030 Mini Ice Age 2015–2035 Series on YouTube](#)

BITCHUTE <https://www.bitchute.com/hashtag/adapt2030/>

BRIGHTON <https://www.brighton.com/channel/adapt2030>

STEEM <https://steemit.com/@adapt2030>

MINDS <https://www.minds.com/ADAPT2030>

MEDIUM <https://medium.com/@globalcooling>

FB <https://www.facebook.com/Miniiceage>

TWITTER <https://twitter.com/adapt2030>

GAB <https://gab.ai/ADAPT2030>