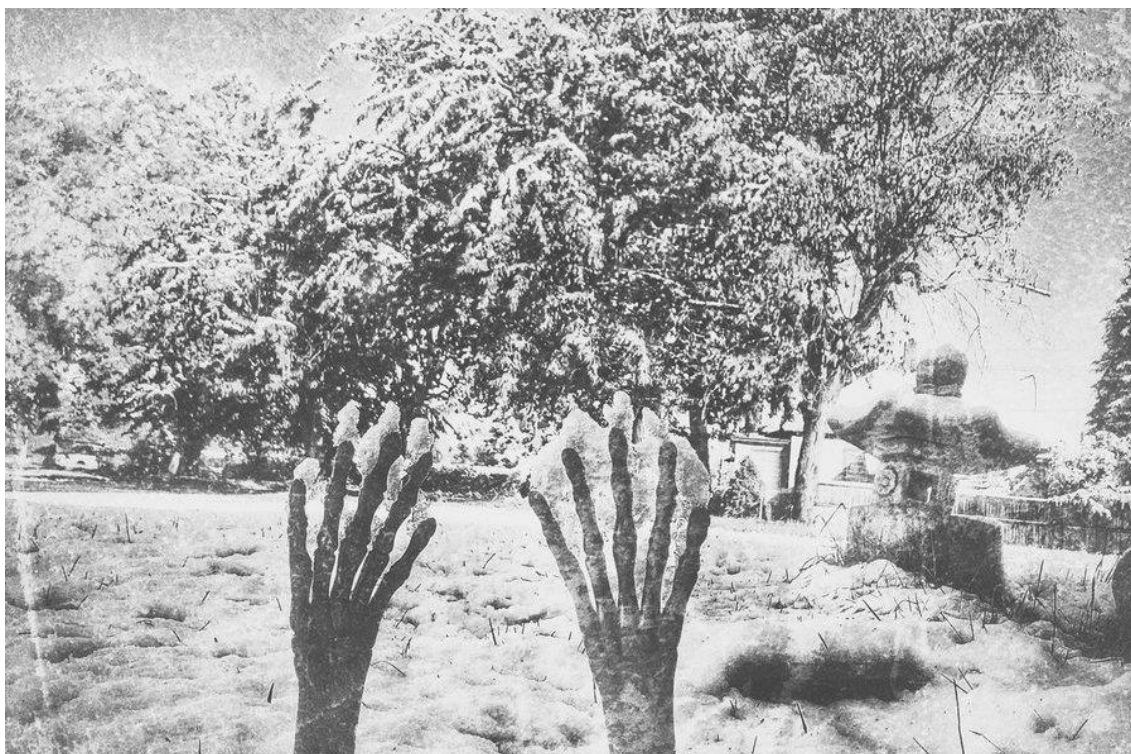


## Atmospheric Shift: Rare Early Snow & Cold in the N. Hemisphere

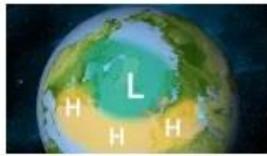


Lately, I have been receiving a lot of messages from people asking why is it so cold; why is there so much snow; and why both hemispheres are acting unusual at the moment, so I dug out these references: *The Madden-Julian Oscillation*, *North Atlantic Oscillation*, *NAO*, and *Stratospheric Polar Vortex*. These will, certainly, be more frequent in the news to explain away anomalous record breaking snows. They would surely connect these events to the blocking patterns or a polar vortex in some areas, or a Jetstream here and there. They will never talk about the Grand Solar Minimum or the effects of the Sun's output on our planet and its ability to change climate in cyclic patterns on multi-century or even multi-millennia time frames, because effects of CO<sub>2</sub> are the only "permitted" narrative.



## The Madden-Julian Oscillation

Tropical rain showers can control our weather



## North Atlantic Oscillation, NAO

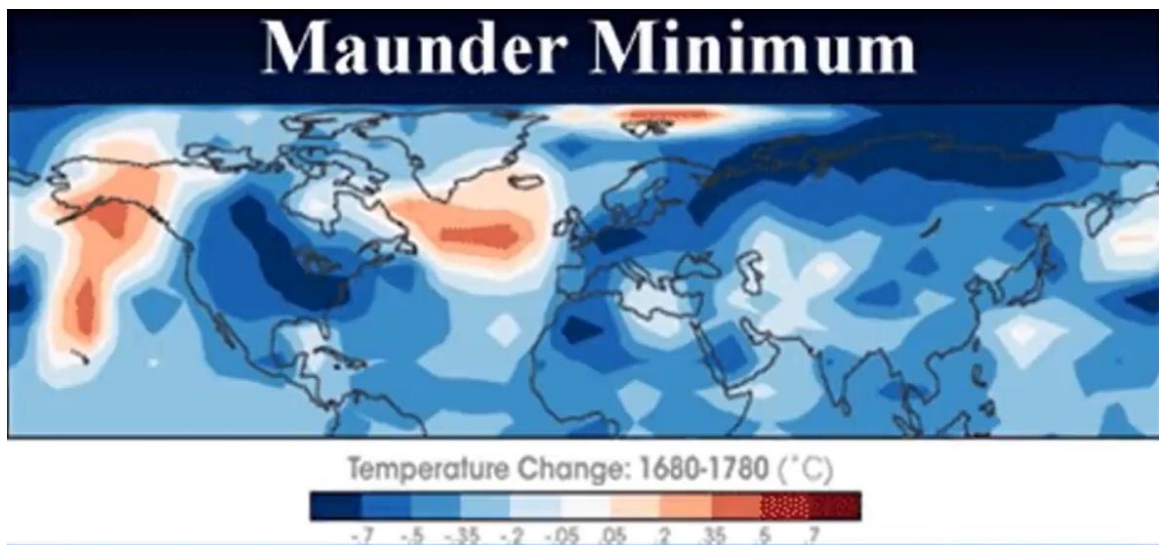
A signature for our winter weather



## Stratospheric polar vortex

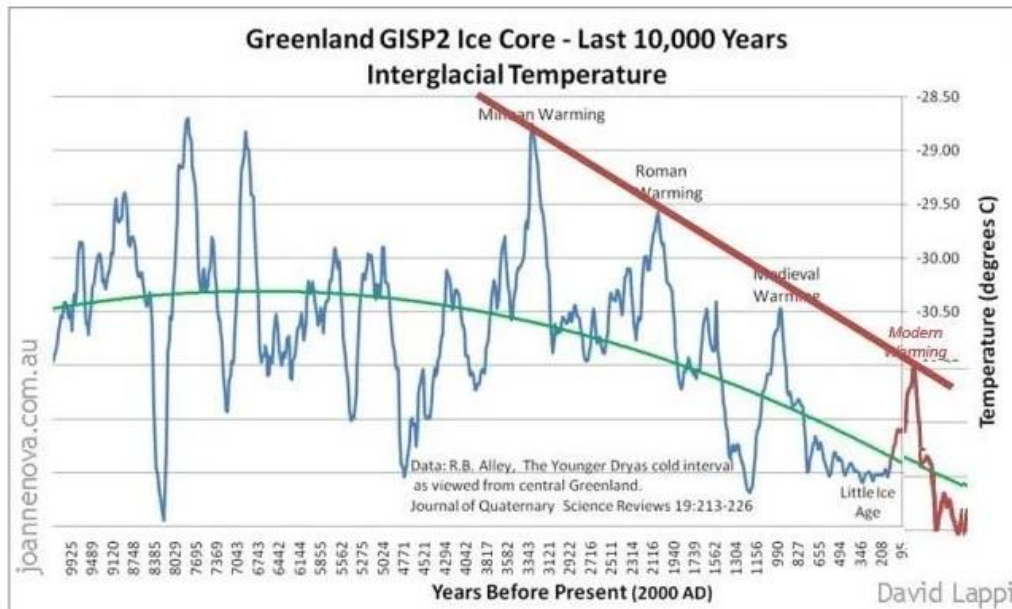
A main ingredient in our winter weather

The dark blue, as shown on the map below, indicates the starkest temperature changes that occurred during the Maunder Minimum. Alaska was noticeably warmer during the Maunder Minimum, which is what we are hearing in the news right now: “It is warmer in Alaska.” Also notice how the Central US, Canada, North Africa, and parts of Europe, such as Latvia and Russia on the far right are repeating the same decline pattern.



Climate scientist Drew Shindell and his colleagues at NASA GISS ran a model which included ultraviolet and stratospheric ozone. Ozone is created when high-energy ultraviolet light from the Sun interacts with oxygen. During the Maunder Minimum, the Sun emitted less UV, and so less ozone formed. The change to the planetary waves kicked the North Atlantic Oscillation (NAO) into a negative phase.

Moreover, the *Last 10 thousand Years of Interglacial Temperature* from *joannenova.com* will never be shown in any corporate media, because these longer temperature records, of over thousands and thousands of years, show a downward trend. In the last 40 years, there is a tiny spike at the end, this I guess is a good indication that our climate has truly shifted vastly over the last 10 thousand years since the Younger Dryas Era.



The signs are indeed, all around us, as we gear-up for incredibly low solar activity that has not been seen in centuries. Here is another one: *Coldest October 6 ever recorded in the Netherlands.*



## COLDEST OCTOBER 6 EVER RECORDED IN THE NETHERLANDS — ADDITIONAL ARCTIC AIR ON THE WAY FOR EUROPE

OCTOBER 7, 2019 CAP ALLON

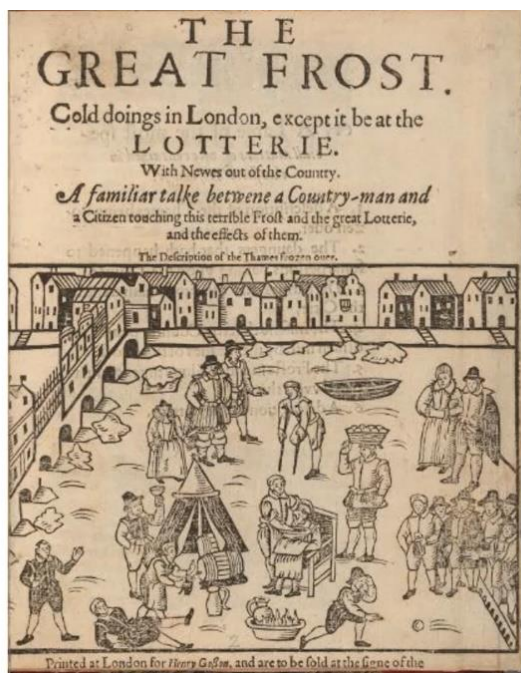
This past Sunday went down as the coldest **October 6th ever recorded in ALL of Holland, in record books dating back to 1901** (*solar minimum of cycle 13*).

The country's daily high, measured at the **national weather station in De Bilt**, climbed to just 9.6C (49F), which busted the previous record low of 10.1C (50F) set back in 1936 (*just exiting solar min of cycle 16*).

This statement, however, is partially true because Netherlands temperature records go back to the 1600s, but what is considered “official” for today’s temperature record keeping goes back to 1901, this year became the coldest October 6 ever, even back to the 1600s.

This is what I question about the debate. We have all this information kept by monasteries and travelers at that time, from chroniclers to some businesses of the church, yet we are not allowed to use them.

The allowed argument for the debate is only from the “official data”, which is usually less than 150 years globally. We have all the data for consumption, stretching back to thousands of years, detailing areas with mega-droughts, cold, and other incredible events that people at that time thought would be remembered for generations to come, because of how extraordinary it was, but it doesn’t count in the modern climate debate.



*Le lagon gelé en 1709*, by Gabriele Bella, part of a lagoon which froze over in 1709, Venice, Italy.

Anyway, from the Netherlands, let us jump over to Latvia, which is marked red on the map. Above it are Scandinavia and some of the Northern countries, such as Norway, Sweden and Finland.



*ELECTROVERSE* featured a few stories about this place, and recently, Latvia received its earliest snowfall on record. Also, the Northern Hemisphere's snow season had a monstrous start and is considered the 2<sup>nd</sup> "historical snowfall" in the United States for many weeks now. These will definitely have a detrimental effects on the crop harvesting.



**WEEKEND FREEZE TO DECIMATE GRAIN HARVESTS: "SUBSTANTIAL PRODUCTION CUTS" ON THE CARDS**

OCTOBER 9, 2019 CAP ALLON

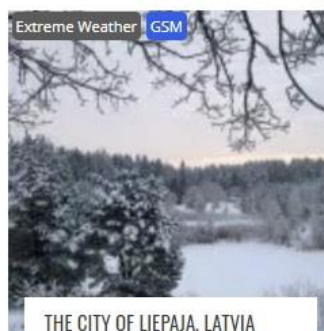
The historic forecast drove grain futures to a two month high in trading yesterday, Tues, Oct...



**NORTHERN HEMISPHERE SNOW SEASON OFF TO A MONSTER START — MORE HISTORIC ACCUMULATIONS ON THE WAY**

OCTOBER 9, 2019 CAP ALLON

This winter season has begun exactly as predicted. We're only on October 9th, and by the...



**THE CITY OF LIEPAJA, LATVIA RECEIVES ITS EARLIEST SNOWFALL ON RECORD**

OCTOBER 8, 2019 CAP ALLON

Last year, Liepaja's first snow didn't arrive until Oct 24, while in 2017, it was Oct...

Following the highlights on record cold temperatures, if you have been following the news since mid-September, Norway and Sweden had record cold and snow as well, and as shown from the image below, the far right is Latvia.



These snows in Sweden arrived early, as snow usually do not start until November, at present, however, it started in September, so this country is looking at substantial earlier snows. In fact, this is the earliest in at least 20 years.



### SEPTEMBER SNOW IN SWEDEN: "EARLIEST IN AT LEAST 20 YEARS"

SEPTEMBER 18, 2019 CAP ALLON 0 COMMENT

It isn't usually until November, and the arrival of much cooler polar air, when Värmland sees snow totals like these...

Shifting a little further south, Hungary experienced 27°F- frost and possible record breaking cold on October 8<sup>th</sup>. They are just waiting for the official totals for verification, but it was a beautiful frosty morning.



**severe-weather.EU** @severeweatherEU · Oct 8

Beautiful frosty morning in Drégelypalánk, Nógrád county, Hungary this morning, October 8th at -3 °C. Thanks to Kinczel László for the fine report!



Then over in Russia, October 5<sup>th</sup> set a new temperature record of -1.7°C, which is around 28°F, breaking the old 1951 record. Cold is now making Russian news this early in the season.

## meteonovosti.ru

### On Sakhalin, the cold nights of

Meteonews News Agency / 11:50 Sunday, October 6 The

day before, a spur of the [Asian anticyclone](#) spread to Sakhalin from the west . In cloudy [weather](#) without precipitation, the air cooled to record levels.

Among the record holders is the settlement of Moskalvo, where the average daily temperature turned out to be 3.4 degrees below the climatic norm, and the new absolute maximum for **October 5 is now -1.7, which is one degree lower than the previous one, which has lasted since 1955.** In Nogliki, instrumental [weather](#) observations were also updated . The thermometer fell to -4.6 degrees, the previous record of -2.3 was observed recently, in 2017.

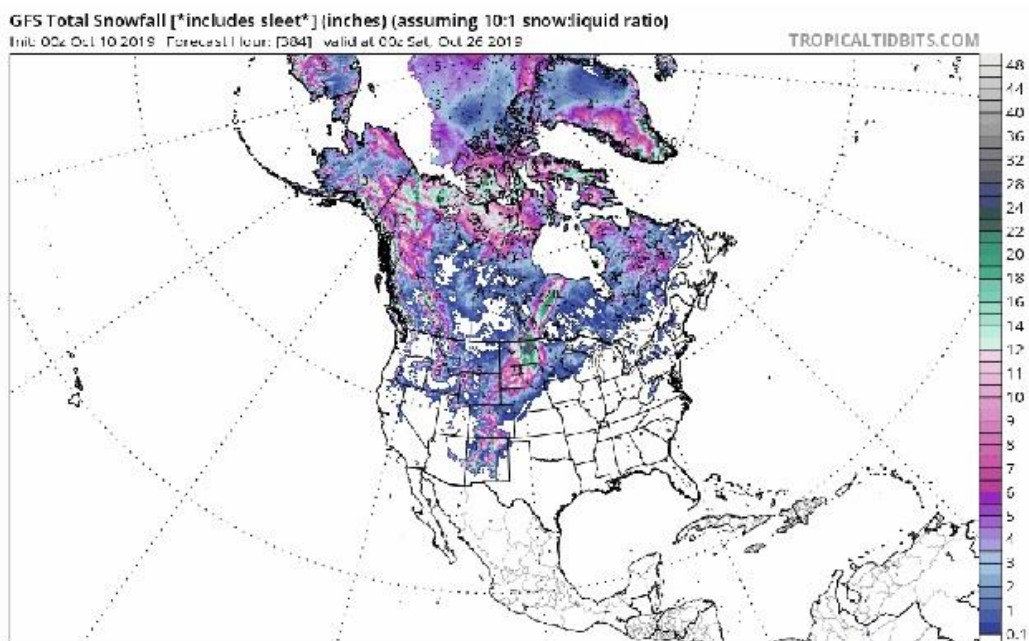
At the beginning of the new week, mainly without precipitation, in the valleys of the center and north, the air will catch frost to -5 degrees, and in the valleys of the south to -2. / [meteonovosti.ru](#) /

In the meantime, circled on the map is Vahino, just above Japan and south of Kamchatka Peninsula with record cold and snow experienced in Japan over the last few years, does this indicate a shift of the polar vortex and the extreme cold to Asia over the next few years? This was observed in Europe and North America as well, so maybe it is just doing its clockwork around the planet and Asia will be battered this year with cold and snow. I guess that remains to be seen.



Looking at the GFS snowfall totals from October 10<sup>th</sup> to October 26<sup>th</sup>. I wanted to show this map because that snow line extends far south, all the way to almost the border of Mexico, and it is not January or February yet. It is still in the middle of October, early fall.

GFS TOTAL SNOWFALL (inches) OCT 10 – OCT 26

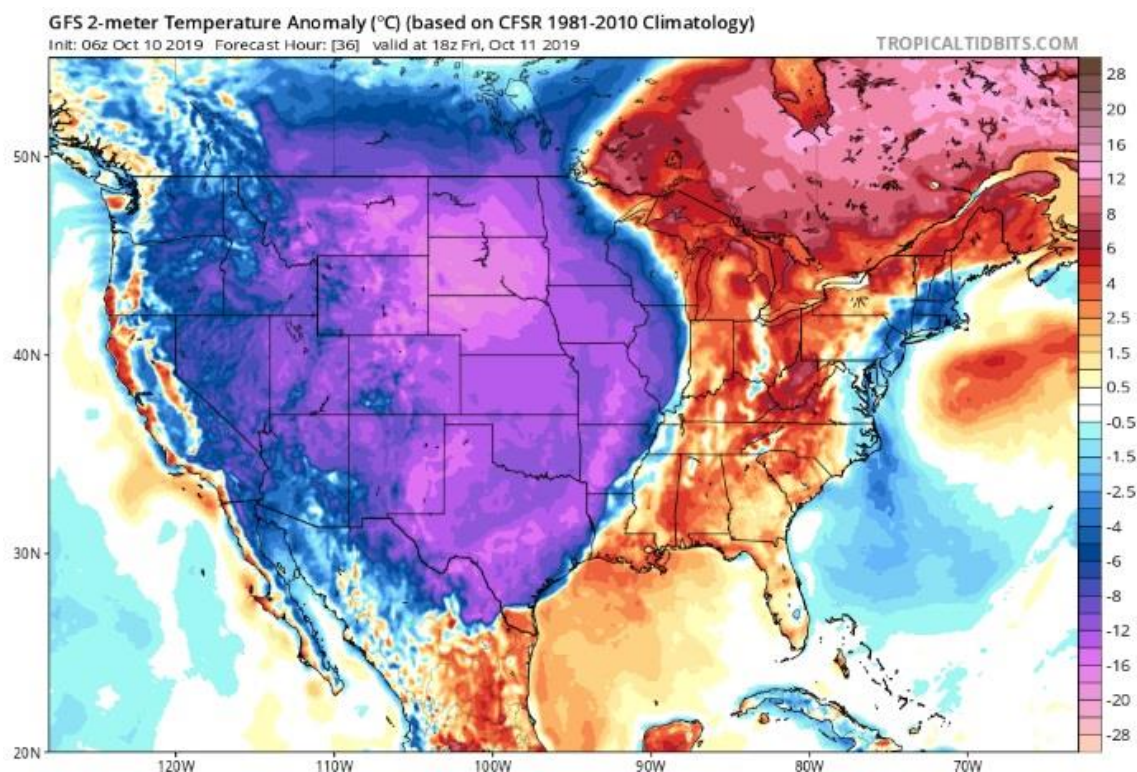


*The forecast totals for New Mexico on Oct 21/22 would be astonishing if they played out.*



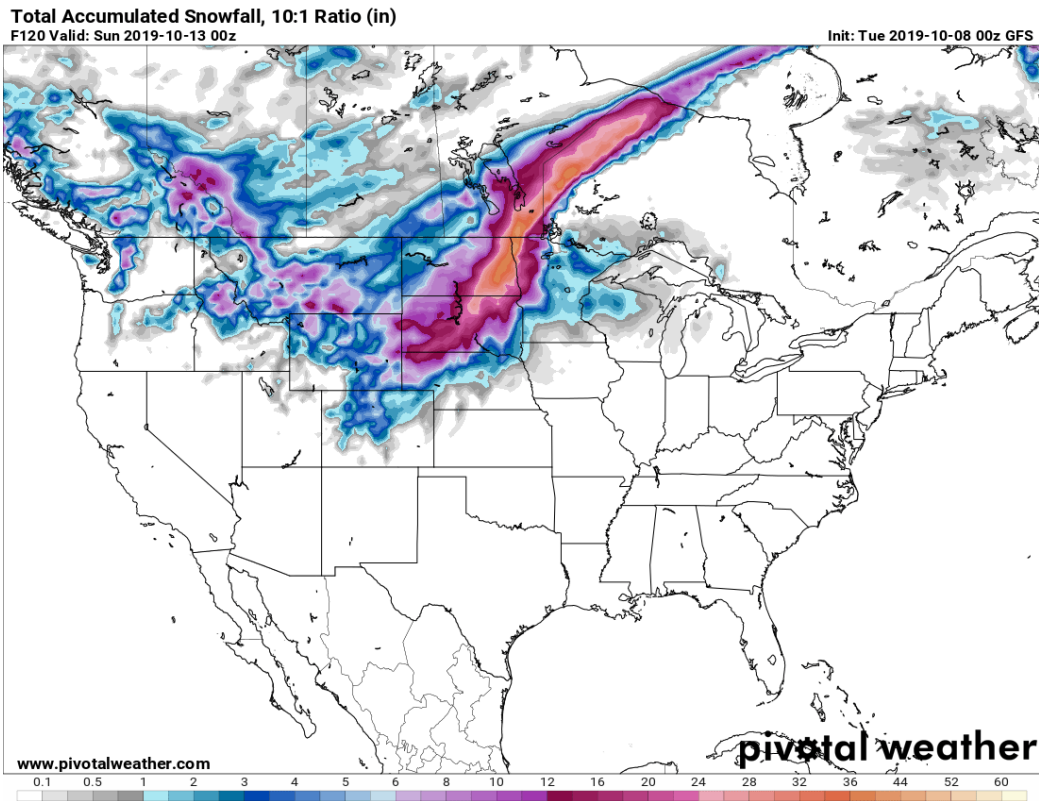
Additionally, all eyes are on this front with brutal cold and a multiple feet of snow sweeping across the U.S. crop growing zones. They are already pummeled by the latest spring planting on record, as well as the lowest amount of planted acreage since 1938, then now, this early snow. There are few crops that have matured in the fields and more than 70% of all the American crops grown in these areas were planted late.

These types of temperatures and snowfall will definitely signal an end to the 2019 growing season.



Early snow and cold, these are two different animals, but both have detrimental effects on N. Hemisphere crop yields. According to *pivotalweather*, snowfall totals are expected to rise, anywhere in the orange region is about 3 ft of snow, periphery of aquas and the blues are half a foot, at the very least. Again, these regions have immature crops so I am wondering if they could harvest early.

Hence, the questions: Will this year be truly the lowest harvest season ever in almost 100 years in the US? How will that affect grain prices globally? Food for you and me is the main reason I do what I do, like discussing how crop losses are cyclical in pattern, matching the Sun's decline in solar activity as well as reminding everyone that less food means higher prices and contracting economy. Everything else snowballs from food, I believe.



Also, *Surprise, Record-Breaking October Snowstorm Buries Spokane.* Does this mean, this is really a surprise, like it caught the weather forecasters off-guard too? This, by the way, is the second snowiest October day ever, and a new all-time daily record for snowfall totals back to 1957. So, how much snow was there?



## SURPRISE, RECORD-BREAKING OCTOBER SNOWSTORM BURIES SPOKANE

OCTOBER 10, 2019 CAP ALLON

Anomalously cold temps will continue to ravage Spokane this week with residents *still* suffering from the power outages brought about by **Tuesday's surprise October snowstorm.**

Tuesday also marked the city's **second snowiest October day ever** — beaten only by the 5.9 inches (15 cm) which fell back in 1957.

Checking with the record books, the 3.3 inches (8.4 cm) of snow that accumulated at the Spokane International Airport on Tuesday, October 8th will go down as a **new all-time daily record**, busting the previous one *of a trace* from back in 1981.

This image shows enough snow to strand those trailers.



**Jane Bunn** @JaneBunn · Oct 7

Its a wintry day ahead - look at the fresh snow at Mt Baw Baw this morning  
[janebunn.net/snow-forecast](http://janebunn.net/snow-forecast) #janesweather #melbourneweather



7NEWS Melbourne and Mount Baw Baw

I dug up this image the day after the record-breaking snow, look how clear the sky is and notice the trees. This has been repetitively observed in the Northern Hemisphere in September and October, snow blanketing the trees that are still fully covered with leaves. This seems to be the new phenomenon.



**Eric Larsen** @KREMEric



We flew the @KREM2 drone over Manito this morning to see some of the damage and to see #Spokane blanketed in record breaking snow.



23 5:34 AM - Oct 10, 2019



Now, to put this in perspective, this is how different this storm is. On October 8<sup>th</sup>, 2019, Spokane International Airport recorded 3.3 inches of snow. The usual daily maximum snowfall total was just a trace, meaning, a tenth of an inch or under, **which is 33 times the old record**. As you can see, newscasters still put the number in the news as a new record, because it was only 3.3 inches of snow, which was not very much. But, if they are going to change the headline to “Spokane breaks its old record by 33 times” you might take a second look. This, sadly, will not happen on the narrative of CO<sub>2</sub> warming.



**NWS Spokane**   
@NWSSpokane



RECORD BREAKING SNOWFALL!

October 8th, 2019 - Spokane Intl. Airport recorded 3.3" of snow.  
The previous daily maximum snowfall for Oct. 8th was a trace in  
1981! #spokane #newrecord #wawx

♡ 159 5:13 PM - Oct 9, 2019



As this storm front approaches the westcoast, PG&E issued a warning that “maybe” some of their lines will fall and fires will start again, so they are going to cut the power to 900 thousand households. Power outages in Northern California, corporations are getting the surfs mentally ready: *California climate scientist predicts more “climate fuel blackout” going forward.*

This is not a “climate fuel blackout”, this is due to poor infrastructure from PG&E that they are worried their cables collapsing and starting fires. It has nothing to do with climate change, it is more on bad infrastructure, bad investment and poor upkeep. Just wait, this whole thing will trigger a shift into renewables.



**Ryan Maue**  @RyanMaue · 11h

More media outlets with emerging narrative of the California power blackouts: climate change.

California climate scientists predict more of these climate fueled blackouts going forward: the new normal of living in a "climate dystopia".



**California's climate dystopia comes true**

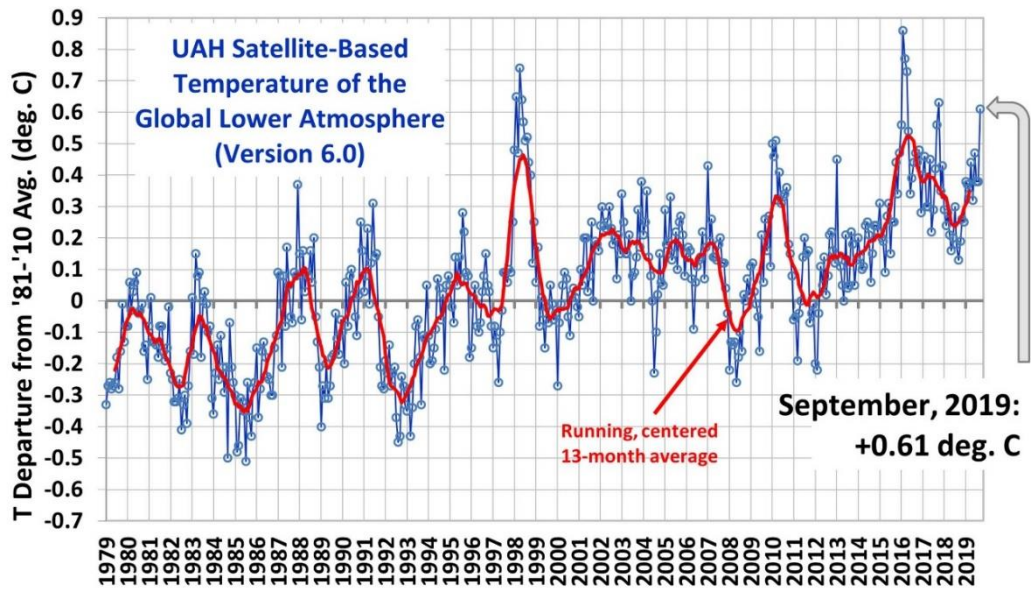
"Out go the lights."

[mashable.com](https://mashable.com)

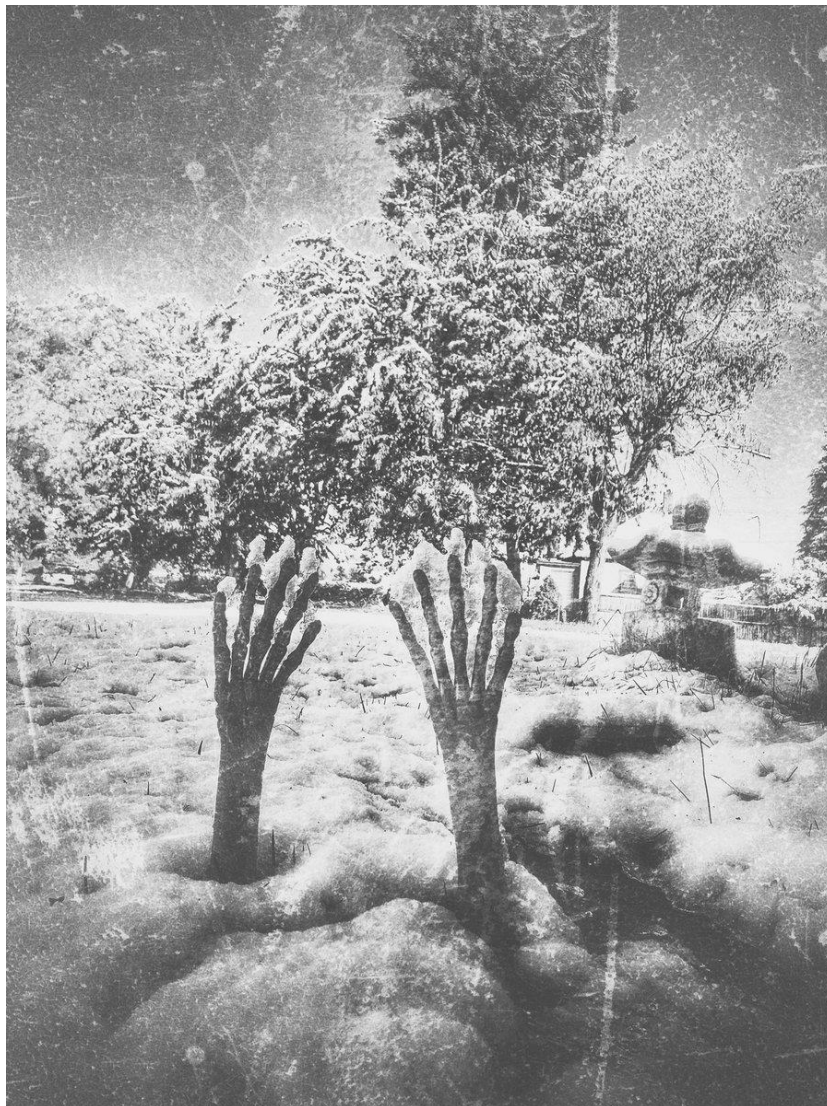
Anyway, in the climate debate, media keeps on saying that the warming oceans cause more evaporation, which creates more snow, but I do not think so. Look back in 1998, if it was truly so, record snows should have been experienced back in the 90s and every record broken at this moment should have been breaking records from the 90s, because of how hot it was "causing more snows because of hot oceans".

That super El Niño in the late 1990's would have caused massive evaporation, which would have caused more massive record snowfalls, but it didn't. So be warned, as we approach the cusp of this Grand Solar Minimum, all these new record snowfalls are coming from nowhere.

I encourage you to do your own research, and investigate the possible causation of these events that are unfolding right now. But then, whatever it is, our atmosphere is absolutely shifting.



Finally, this is a little bit scary. Halloween decorations are covered by the all-time heaviest October snows in Washington State.



Thanks for reading, I hope you got something out of the article. If you like more content like this, I produce the tri-weekly Mini Ice Age Conversations podcast of a 30-minute in-depth analysis on the GSM you can take on the go through out your day.



## NEW FEB ONLY MERCH



[Teespring.com/Stores/Adapt-2030](https://teespring.com/stores/Adapt-2030)

It's Not CO2. It's Not You, It's the Sun - ADAPT 2030 Limited Edition Design. Wearing this shirt may trigger Al Gore. <https://teespring.com/stores/adapt-2030>

\*\*\*Mini Ice Age Conversations Podcast\*\*\*

iTunes: <https://itunes.apple.com/us/podcast/a...>

Soundcloud: <https://soundcloud.com/adapt-2030>

Libsyn: <http://adapt2030.libsyn.com/>

MIAC #237 Redundant Systems for Survival in the Grand Solar Minimum  
<https://adapt2030.libsyn.com/miac-237...>

Climate Revolution is a 'Must Read' for understanding our Sun driven climate as we progress deeper into the new Eddy Grand Solar Minimum. Weather extremes leading to Global food scarcity and high food prices are here now, and this book describes the expected changes, how to survive & thrive during future challenging times with practical preparations.

NEW ADAPT 2030 Climate Revolution

<https://payhip.com/b/3sVi/af5d15cc7ddd65e>

\*\*\*Support ADAPT 2030 by Visiting Our Sponsors\*\*\*

My Patriot Supply 2-Week Food Supply 92 servings  
[www.preparewithadapt2030.com](http://www.preparewithadapt2030.com)

True Leaf Market Organic & Heirloom Seeds  
[ADAPT 2030 True Leaf Market Link](#)

ADAPT 2030 Amazon Climate Preparedness Portal  
<https://amzn.to/2Q8LqrV>

ADAPT 2030 Patreon [www.patreon.com/adapt2030](http://www.patreon.com/adapt2030)

ADAPT 2030 Subscribe Star [www.subscribestar.com/adapt-2030](http://www.subscribestar.com/adapt-2030)

For the ADAPT 2030 Grand Solar Minimum newsletter jump over to Oilseedcrops.org where you can enter your email and sign up. Move your mouse around for about 10 seconds and this box will pop up.

Join ADAPT 2030 NEWSLETTER <http://www.oilseedcrops.org>

**Grand Solar Minimum Climate Updates**

Our Sun is repeating a 400 year cycle which will effect global crop yields. Food prices will increase everywhere on this planet.

Sign up now to understand how the Grand Solar Minimum will affect your life as it intensifies from this point forward?

Enter your email address here...

**SUBSCRIBE**

Mini Ice Age Conversations

© 2017 Oilseedcrops.org



\*\*\* Today's Story Links \*\*\*

2nd Historic Snowfall in Two Weeks SURPRISE, RECORD-BREAKING OCTOBER SNOWSTORM BURIES SPOKANE

<https://electroverse.net/surprise-oct...>

Dr Roy Spencer global temperatures

<https://www.drroyspencer.com/wp-conte...>

THE CITY OF LIEPAJA, LATVIA RECEIVES ITS EARLIEST SNOWFALL ON RECORD

<https://electroverse.net/the-city-of-...>

SEPTEMBER SNOW IN SWEDEN: "EARLIEST IN AT LEAST 20 YEARS"

<https://electroverse.net/september-sn...>

COLDEST OCTOBER 6 EVER RECORDED IN THE NETHERLANDS — ADDITIONAL ARCTIC AIR ON THE WAY FOR EUROPE

<https://electroverse.net/coldest-octo...>

Record cold Sakhalin Russia

<http://www.hmn.ru/index.php?index=1&t...>

<https://www.iceagenow.info/record-col...>

Almost entire Sweden with subzero temperatures

<https://www.iceagenow.info/almost-ent...>

<https://www.svt.se/vader/amne/kyligt>

<https://www.svtstatic.se/image/wide/9...>

Atmosphere patterns

<https://www.svt.se/vader/20307010>

Cold Sweden temperatures

<https://www.svtstatic.se/image/wide/9...>

Record snowfall Alberta

<https://chatnewstoday.ca/2019/09/29/r...>

GFS Temperature USA Grain growing zones

<https://www.tropicaltidbits.com/analy...>

Snow totals USA Crop growing zones

<https://pbs.twimg.com/media/EGZKHuSWk...>

Washington state Halloween decorations

<https://pbs.twimg.com/media/EGc8q-XUY...>

\*\*\* ADAPT 2030 Social Media Links \*\*\*

YOUTUBE [ADAPT 2030 Mini Ice Age 2015–2035 Series on YouTube](#)

BITCHUTE <https://www.bitchute.com/hashtag/adapt2030/>

BRIGHTTEON <https://www.brighteon.com/channel/adapt2030>

STEEM <https://steemit.com/@adapt2030>

MINDS <https://www.minds.com/ADAPT2030>

MEDIUM <https://medium.com/@globalcooling>

FB <https://www.facebook.com/Miniiceage>

TWITTER <https://twitter.com/adapt2030>

GAB <https://gab.ai/ADAPT2030>