

Ancient Palaces and Multi-Thousand Rain Cycles Return



Shown in the image below is considered as one of the most ancient ruins in history, the Hatra ruins in Mosul City, Iraq. That jeep in front of the ruins should give you an idea of how massive this structure is. This also gives an indication of how advanced civilizations were at that time.



The history of the Hittites, Assyrians and Mitanni along with the ancient Egyptians stretch back 7800 years. The Mitanni King, Shaushtatar had these symbolisms in his royal seal, the lions and the crows.

HURRIANS & MITTANI

- ❖ **Hurrians** were located in North Mesopotamia (bronze age), speaking language isolate
- ❖ **Mittani** were Indo-European – speaking people who were ruling class in land of Hurrians (Hanigalbat in Assyrian)



- ❖ Mittani king **Shaushtatar** (ruled in 15th century BCE) sacked Assur
- ❖ King **Tushratta** was a contemporary of Amenhotep III, Akhenaten, and Suppiluliuma I



Urkish lion
and the earliest writing in Hurrian
(21st century BCE)

On the left is the royal seal of the Modern Kurdish Mitanni Empire, Ezdanism Religion, which somehow morphed into something else, it is with the pineal gland at the top. These symbols are old, a revisit to the cradle of our civilization, if you will on the right.

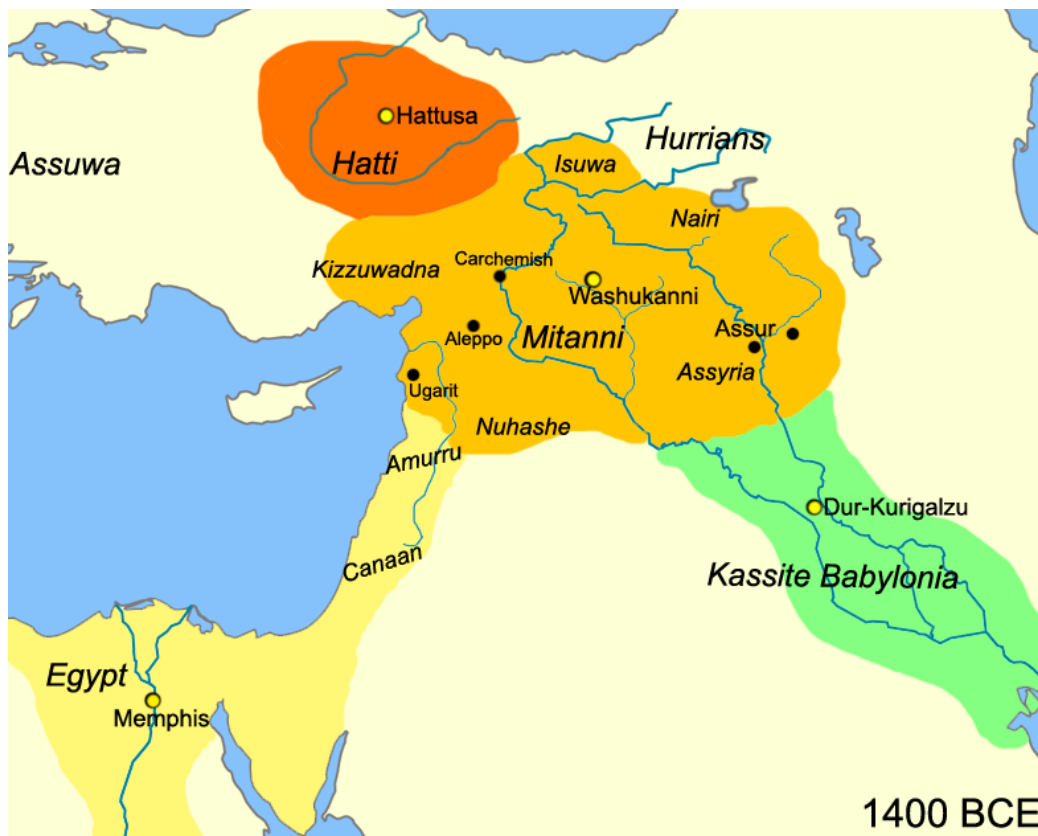


This has sparked my interest because recently archaeologists uncovered the forgotten underwater palace of the Mitanni Empire. This has made news headlines, and the Mosul dam has gone so low that this palace is once again accessible as dry land. These ancient civilizations are not being heard about by today's generation, especially the Assyrians.



Archaeologists uncover palace of the Mittani Empire in the Duhok province of the Kurdistan Region/ Iraq

The history from this time is very sketchy and limited, except for what the museums tell us. How many times have you heard about Mitanni and Hittites in your history class, or even seen them in your history books?



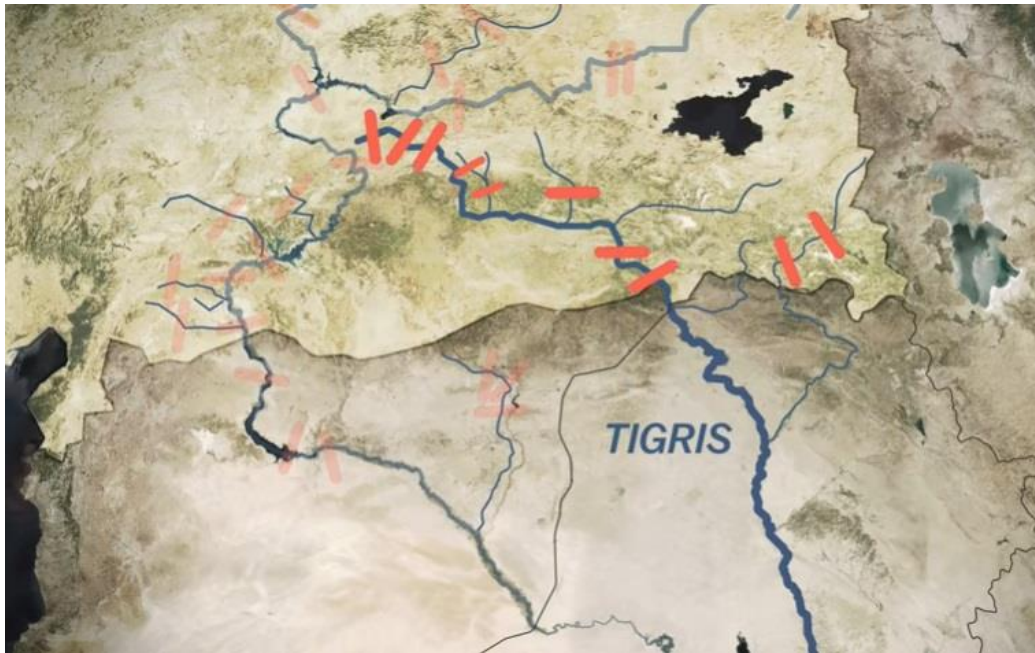
If you look at the rivers there, they clearly show that before the dam construction, there was bountiful water flowing in those areas. This is a cradle of civilization after all. In our modern era, however, we see the Euphrates River being dammed in multiple locations, from Turkey to Syria.



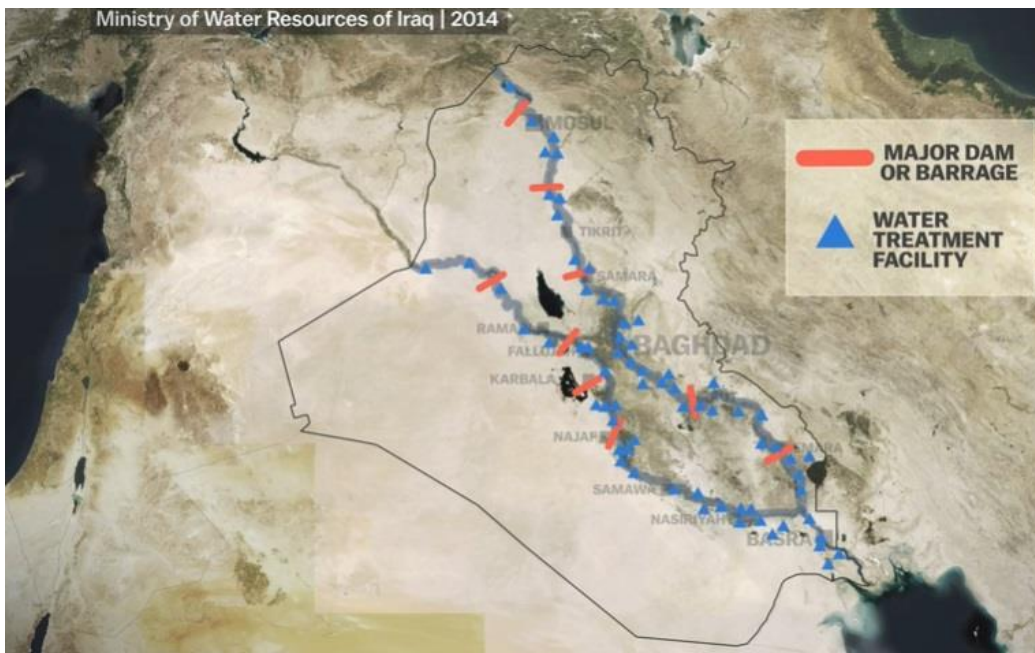
These dams obviously restrict water flows and then along the Euphrates, the same phenomenon can be observed. Dams are almost everywhere, which completely block off water flow, except for where authorities decide to let water through. Recently, there are two mega constructions that have reduced water flow even further.



Question, are these areas truly experiencing drought on a 3,400-year time scale, or is it a combination of dams restricting water flow plus the drought cycle itself? Because if you look at the Tigris River, water flow is being restricted as well.



Even in Iraq major waterways are restricted by dams. So, taking this into consideration, I believe it would match past climate cycles if it is a probable water cycle compared to a man-made phenomenon drying out the country.



Looking at historical events for this place, it is stated in *Heritage Daily* that the Mitanni Empire covered an area reaching the eastern Mediterranean, all the way to northern Iraq. The Akkadian's cuneiform tablets from the Sumerians showed that the writing system was still intact at that time. Also, all the titles and the names that you have heard since the beginning of history, from the Egyptian pharaohs, the kings of the Hittites and Babylonia, down to the kings and queens in Europe, are traced 3,400 to 7,800 years back in time.

Archaeologists uncover palace of the Mittani Empire in the Duhok province of the Kurdistan Region/ Iraq**The Mittani Empire**

The Mittani Empire covered an area reaching from the eastern Mediterranean coast to the east of present-day northern Iraq from the 15th century to the middle of the 14th century BC. Its heart was in what is now northeastern Syria, where its capital Washukanni was probably located. Akkadian cuneiform texts from the site of Tell el-Amarna in present-day Egypt show that the Mittani kings interacted as equals with the Egyptian pharaohs and the kings of Hatti and Babylonia.

The Mitanni's battled the Assyrians that led to their collapse. And you might want to ask why after being stable for centuries, they started fighting with the Assyrians. The fighting comes and goes, so the Hittites collapsed, Mitanni collapsed, also Babylon and Assyria collapsed, but why?

Political Ties

- Developed ties with Babylonian Empire in Mesopotamia
- Mittani in Syria
- Hittite Empire in Anatolia



Adding to the mystery, this same iconography has been used again and again through history: the winged flying beasts, with 10 to 15-foot tall beings who are worshipping the Sun or different celestial objects. DNA pouches can also be seen. This iconography of intertwining DNA has been used across the planet. So, ancients knew much more back then than we give them credit for, specifically about DNA and possibly human genome mapping, and thereby creation of species.



Fig. 10 Seal of king Idrimi of Alalah, found in Level IV
(from: COLLON 1975: 99, fig. 189) Scale 2:1

If you look at the Mitanni Empire chronology from 1500 BC to 1200 BC, it matches the 400-year interval of this Grand Solar Minimum. 1200 BC would be the collapse, and the beginning would be around 1600 BC, but it is actually in 1540 BC, giving a 60-year window of recovery from the last Grand Solar Minimum that wiped out crop production.

MITTANI EMPIRE AND THE QUESTION OF ABSOLUTE CHRONOLOGY: SOME ARCHAEOLOGICAL CONSIDERATIONS

*Mirko Novák**

	Mittani	Ḫatti	Aššur	Egypt
~ 1540 BC	"King of the Hurrians"	Ḫattušili I		
~ 1500 BC	Kirta (?)	Muršili I		
	Šuttarna I (?)	Ḫantili		Thutmose I
	Parrattarna	Zidanta		
	Parsatatar			Thutmose III
~ 1420 BC	Saušatar	Ḫattušili II		Amenophis II
	(Parrattarna II ?)			
~ 1400 BC	Artatama I			Thutmose IV
	Šuttarna II	Tuḫḫalia II		
	Artaššumara	Arnuwanda I		Amenophis III
~ 1360 BC	Tušratta	Šuppiluliuma I	Aššur-uballiḫ I	Amenophis IV (= Akhetaten)
	(daneben: Artatama II und Šuttarna III)			Tutankhamen
	Šattiwaza			
~ 1290 BC	Šattuara I	Muršili II	Adad-nērari I	
	Wasašatta			
~ 1240 BC	Šattuara II	Ḫattušili III	Šalmaneser I	Ramses II
~ 1200 BC	Atal-Tešsub	Tuḫḫaliya III (IV)	Tukulti-Ninurta I	

Fig. 2 List of known Mittani rulers and synchronisms with Ḫatti, Aššur and Egypt (after: WILHELM 1982 and KCHNE 1999)

The 3D imagery at the gates of Mosul is quite interesting as well.



That brings us to the golden idol of the winged lion.



From this, the same mixed animal races were depicted in stones, like the two-legged beast with a lion head and the horse legged human figurines which are gigantic in girth and stature holding spears. But notice how they are holding the spears, were they just doing that, or were they creating an energy portal? I think there are so many things that were explained differently or that were left unexplained from our ancient past.



Look at this relief, for example. If those guys are 6 feet tall, how large is that horse? Other horses also looked 14 to 15 feet long and 9 feet tall. There are no horses that are as girthy or as large in today's world.



Ishtar has the star pattern in front of the wheel, which was also seen in the Kurdish Mitanni Empire representations, as well as everywhere through the ancient past. It is always the same symbolism. So, what were the messages that they left for us in this modern time?



Royal seal of Šauštatar of Kurdish Mitanni Empire



Royal seal of Modern Kurdish Ezdanism Religion

When we look at the collapse of a 3,400-year old civilization, the Bronze Age, I do believe that droughts experienced in these areas are due to a combination of a drought cycle and modern infrastructure restricting water movement.

28 JUNE, 2019 - 21:20 ED WHELAN

3,400 Year-old Palace From a Mysterious Civilization Revealed by Drought

READ LATER

PRINT

Archaeologists are hailing, as very important, the dramatic discovery of a **Bronze Age Palace**. It was revealed as the waters of a reservoir fell because of a severe drought in Iraq. The ruin is believed to have been built by the little known Mittani Empire and researchers hope that it will provide more insights into this very important state and society.

The **ruined palace** was found at a site known as Kemune, on the east bank of the Tigris River, in Iraqi-Kurdistan and it has been named after this location. It was **revealed** because the water level of the **Mosul Dam**, drastically fell because of a serious lack of rainfall. The dam was built in the 1980s and the building was first identified in 2010 but rising water levels meant that it was submerged again, at that time.

I already did a story on the Akkadian Empire collapse due to the 400-year cycle, which brings us up a little closer in history, around 1200 BC, where they fell. And so, what does this iconography of the human on the right and the giant godlike figure on the left tells us regarding this collapse? This was seen before too. Again, there was something in our ancient past that is not being passed down to us.



How climate change caused the world's first ever empire to collapse

Header image - Statue of Naram-Sin, king of Akkad, celebrating his victory against the Lullubi from Zagros. Limestone, c. 2250 BCE. Brought from Sippar to Susa among other spoils of war in the 12th century BCE. Credit :Jastrow by HeritageDaily © January 4, 2019 # 7447

When we look back in time with this chart of 6,000-year rain cycle, we might understand better. The red graph means less rain, and the green means more rain. If you start at the far left of the chart, 6000 years in the past, you notice it was much rainier in that same area of the eastern Mediterranean, Syria and Iraq, then at present, which are bone-dry.

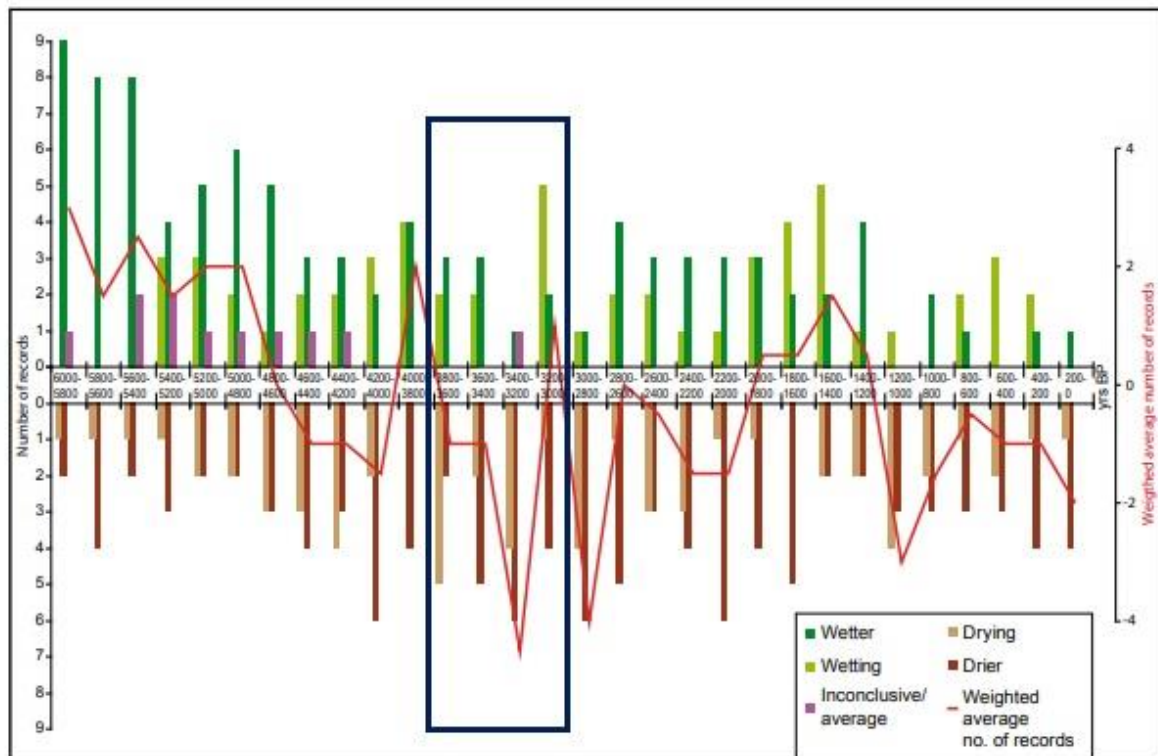
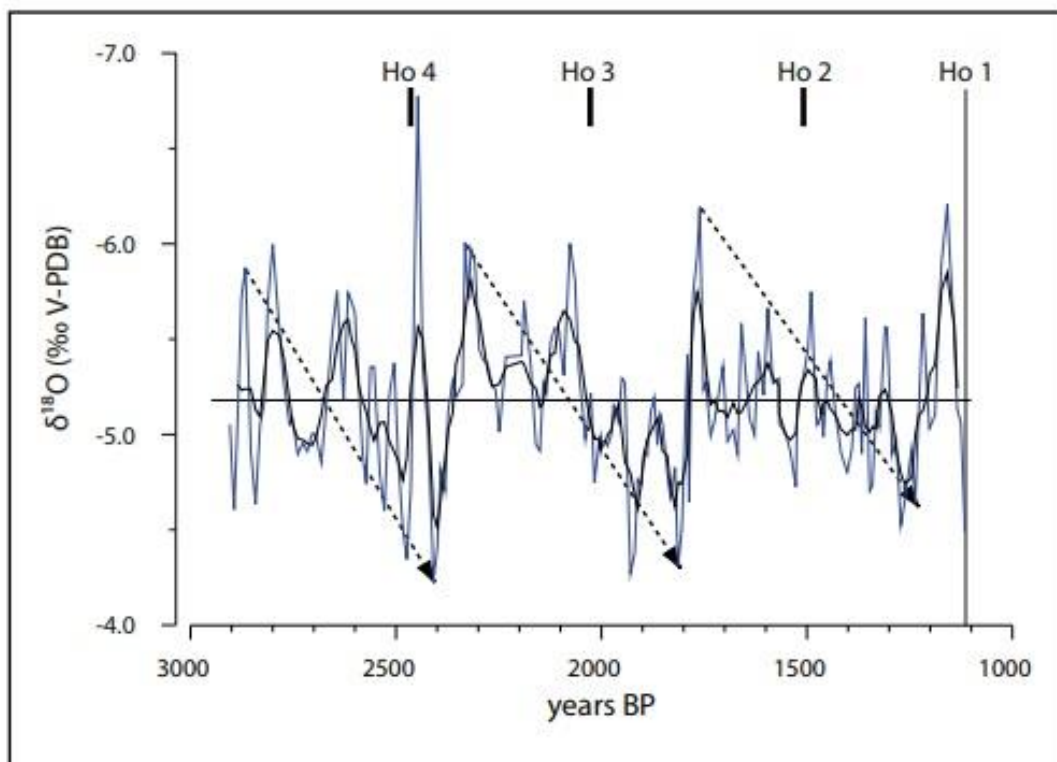


Figure 9. The results from the temporal analysis of paleoclimate records showing wetter and drier conditions from the eastern Mediterranean. Each bar represents the number of records in each 200-year time slice that show either above (wetter) or below (drier) than average conditions, or going from either drier to wetter (wetting) or from wetter to drier (drying) conditions. Average line (red) is calculated as follows: dark green bars were assigned a value of +2, light green bars were assigned a value of +1, dark brown bars were assigned a value of -2 and light brown bars were assigned a value of -1. For each 200-year period an average value was calculated based on the assigned values.

The blue box which I included there is the time of the collapse, 3,400 or 3,500 years ago, due to exceptional drought. That is the highest drought index on the entire 6,000-year span of time. Then in addition, the conflict between the Assyrians and the Mitanni. This is why I firmly believe what those conflicts were all about, food and water resources, as well as territorial domains.

This chart showing oxygen-18 isotopes, the lower you go on the chart, or the higher the value on the number at -4 versus -7, the wetter the season is. This means that the bottom, where the arrows are pointed, are way wetter, and if you start counting, it is in a 400- to 500-year interval of the Grand Solar Minimum. The two bottom peaks that indicated collapse during the Grand Solar Minimum were 1200 years before present. We are now starting to see this collapse again. This new Grand Solar Minimum is on top of us, so we might want to learn from the past.

Climate in the eastern Mediterranean during the Holocene and beyond – A Peloponnesian perspective



This chart shows the area I covered in this article, and it brings us back to these same DNA pouches that were seen across all the continents that were supposedly unconnected from 3,500 and 2,500 years ago.

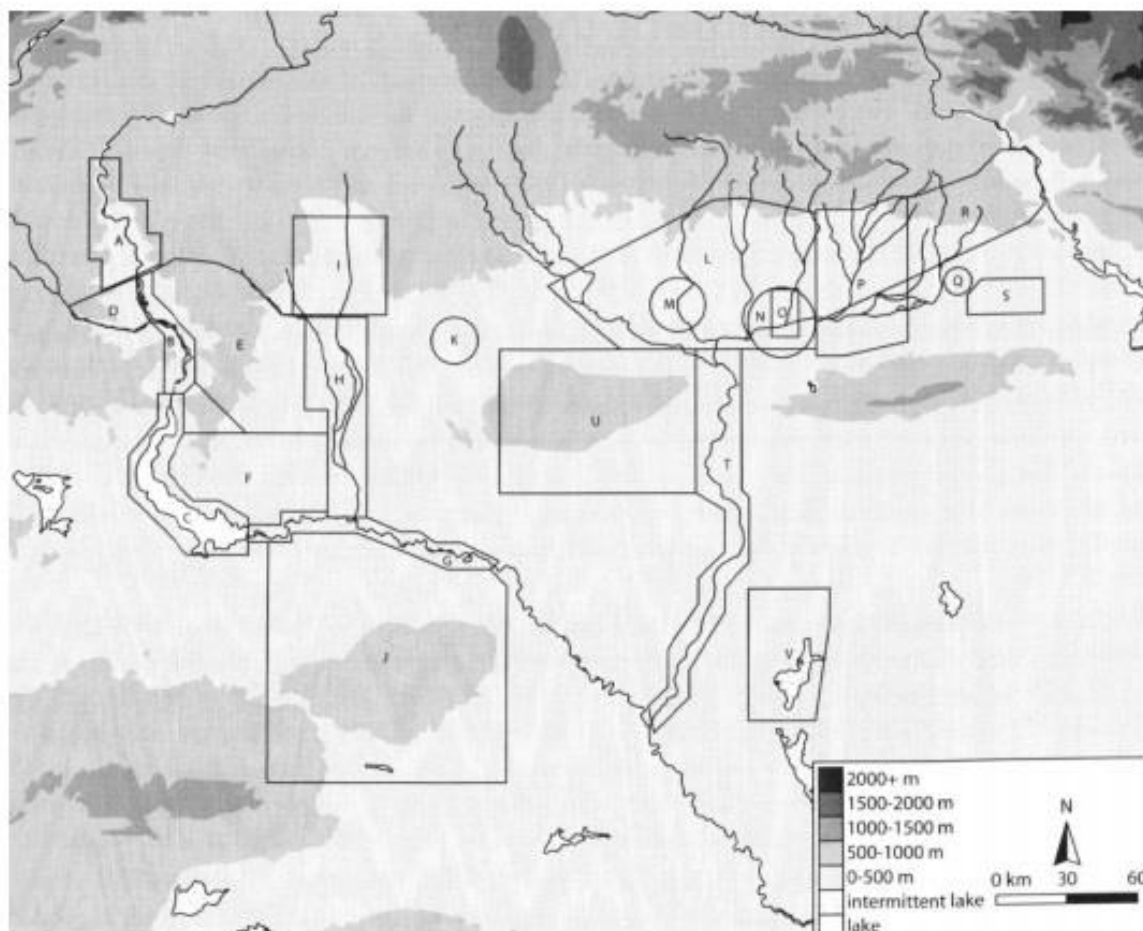


Figure 3: Map of northern Mesopotamia indicating spatial coverage achieved by recent surveys (Wossink 2011, 66 fig. 5.1) (A) Birecik-Euphrates Dam Survey (B-EDS). (B) Tishrin Dam surveys. (C) Tabqa Dam surveys. (D) Land of Carchemish survey. (E) Westgazira survey. (F) Balih-Euphrates uplands survey. (G) Middle Euphrates Survey. (H) Balih Survey (BS) and Wadi Qaramogh survey. (I) Harran survey. (J) Jebel Bishri survey. (K) Wadi Hammar survey. (L) Upper Hābūr survey. (M) Tell Beydar survey (TBS). (N) Brak sustaining area survey. (O) 1988 Tell Brak Survey. (P) Leilan Regional Survey (LRS). (Q) Tell Hamoukar survey (THS). (R) Northeast Syria survey. (S) North Jazira Survey (NJS). (T) Lower and Middle Hābūr survey. (U) Hābūr Basin Project. (V) Wadi Aḡiḡ survey.

So why is it the same from going back to *l'Etape*, all the way through to the Mayans?



Even this ancient sword had this easily recognizable DNA strand on it. Links to this story can be found at the end of the article. So follow through this story, and browse through our history for the last 5,000 years, really happened? Because we are on a climate cycle, and we are in 'it' again.



The weapon bearer of King Cyrus he Great

Our civilizations are going to collapse in these next few years because our economy is so fragile, with the just-in-time delivery system. I detailed this the best I could in my new book, [Climate Revolution: The Grand Solar Minimum, Understand – Prepare – Adapt – Thrive](#).

Climate Revolution The Grand Solar Minimum



Understand - Prepare - Adapt – Thrive

How the Sun will Affect Society, Economy and Food Prices

By David DuByne, Bill & Richard Porter

Climate Revolution is a 'must read' for the understanding of our Sun driven climate as we progress deeper into the new Eddy Grand Solar Minimum. Weather extremes leading to Global food scarcity and high food prices are here now, and this book describes the expected changes, how to survive & thrive during future challenging times with practical preparations.

NEW ADAPT 2030 Climate Revolution
<https://payhip.com/b/3sVi/af5d15cc7ddd65e>

There is a section there on how the Grand Solar Minimum increases or decreases rainfall. I hope you are preparing for this climate pattern that we are in; and I wish you the best of luck in your preparations, because the decline of our modern civilization has already begun.

How GSM Increases Rainfall

Increased Cosmic Rays lead to Cloud Nucleation

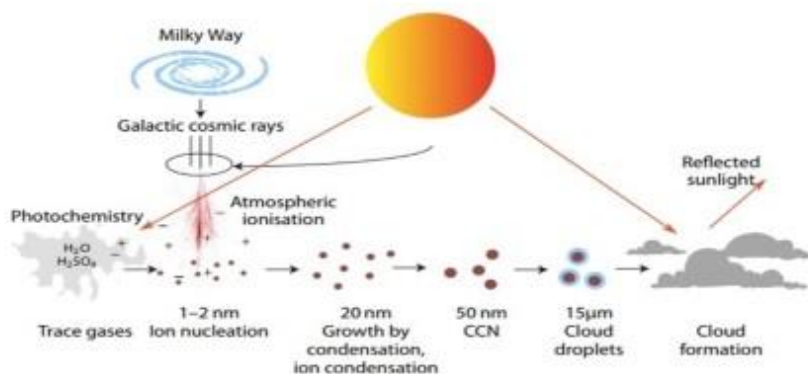


Figure 12: The physical mechanism linking solar activity variations to climate change. In summary, the link is: (a) a more active Sun, (b) stronger solar wind, (c) fewer cosmic rays, (d) less atmospheric ionisation, (e) less nucleation and slower growth, (f) fewer CCN, (g) clouds with less droplets, (h) less reflectivity, (i) less reflection of sunlight and a warmer Earth.

Cosmic rays are highly energetic atomic nuclei or other particles (e.g. protons) traveling through space at a speed approaching that of light, thus the term "rays" is technically misleading since they themselves don't constitute electromagnetic radiation. When cosmic rays enter Earth's atmosphere, they disintegrate in a cascade into subatomic particles, which act as cloud condensation nuclei by ionization and thus instigate low level cloud formation (cloud seeding).

Thanks for reading, I hope you got something out of the article. If you would like more content like this, I produce the tri-weekly Mini Ice Age Conversations podcast, 30 minutes of in-depth analysis on the GSM you can take on the go through out your day.

Mini Ice Age Conversations Podcast

iTunes: <https://itunes.apple.com/us/podcast/a...>

Soundcloud: <https://soundcloud.com/adapt-2030>

Libsyn: <http://adapt2030.libsyn.com/>

MIAC #214 Currency reset around the corner how will we buy, sell and trade? <http://adapt2030.libsyn.com/miac-214...>

Support ADAPT 2030 by Visiting Our Sponsors

My Patriot Supply
2-Week Food Supply 92 servings
www.preparewithadapt2030.com

True Leaf Market Organic & Heirloom Seeds
[ADAPT 2030 True Leaf Market Link](#)

ADAPT 2030 Amazon Grand Solar Minimum Book Store
<https://www.amazon.com/shop/adapt2030>

ADAPT 2030 Patreon www.patreon.com/adapt2030

ADAPT 2030 Subscribe Star www.subscribestar.com/adapt-2030

For the ADAPT 2030 Grand Solar Minimum newsletter jump over to Oilseedcrops.org where you can enter your email and sign up. Move your mouse around for about 10 seconds and this box will pop up.

Join ADAPT 2030 NEWSLETTER <http://www.oilseedcrops.org>

Grand Solar Minimum Climate Updates

Our Sun is repeating a 400 year cycle which will effect global crop yields. Food prices will increase everywhere on this planet.

Sign up now to understand how the Grand Solar Minimum will affect your life as it intensifies from this point forward?

Enter your email address here...

SUBSCRIBE

Mini Ice Age Conversations

*** Today's Story Links ***

Archaeologists uncover palace of the Mittani Empire in the Duhok province of the Kurdistan Region/ Iraq

<https://www.heritagedaily.com/2019/07/archaeologists-uncover-palace-of-the-mittani-empire-in-the-duhok-province-of-the-kurdistan-region-iraq/124099>

<https://www.ancient-origins.net/news-history-archaeology/kemune-palace-0012207>

Reliefs Assyrian and Mittani empires

[https://www.tf.uni-](https://www.tf.uni-kiel.de/matwis/ammat/iss/kap_b/backbone/rb_1_4.html#_dum_24)

[kiel.de/matwis/ammat/iss/kap_b/backbone/rb_1_4.html#_dum_24](https://www.tf.uni-kiel.de/matwis/ammat/iss/kap_b/backbone/rb_1_4.html#_dum_24)

Why Iraq's great rivers are dying

<https://www.youtube.com/watch?v=c7AuSQdvow>

MITTANI EMPIRE AND THE QUESTION OF ABSOLUTE CHRONOLOGY

<https://core.ac.uk/download/pdf/35123190.pdf>

<https://krieger2.jhu.edu/neareast/pdf/jcooper/jc%20Umm%20el-Marra.pdf>

Mittani Art

<http://ancientneareast.tripod.com/PDF/MitanniOI.pdf>

Climate patterns

https://openaccess.leidenuniv.nl/bitstream/handle/1887/20422/Final%20Thesis_Aris%20Potliopoulos.pdf?sequence=1

Climate in the eastern Mediterranean during the Holocene and beyond — A Peloponnesian perspective

<https://www.diva-portal.org/smash/get/diva2:753390/FULLTEXT01.pdf>

Gol-e-Zard Cave lies in the shadow of Mount Damavand, which at more than 5,000 metres dominates the landscape of northern Iran

<https://www.heritagedaily.com/2019/01/how-climate-change-caused-the-worlds-first-ever-empire-to-collapse/122428>

*** ADAPT 2030 Social Media Links ***

YOUTUBE [ADAPT 2030 Mini Ice Age 2015–2035 Series on YouTube](#)

BITCHUTE <https://www.bitchute.com/hashtag/adapt2030/>

BRIGHTTEON <https://www.brighteon.com/channel/adapt2030>

STEEM <https://steemit.com/@adapt2030>

MINDS <https://www.minds.com/ADAPT2030>

MEDIUM <https://medium.com/@globalcooling>

FB <https://www.facebook.com/Miniiceage>

TWITTER <https://twitter.com/adapt2030>

GAB <https://gab.ai/ADAPT2030>