

Global Cloud Bands Shift Asian Rice Yield Down

[— ADAPT 2030 Video Link —](#)



Starting over here in the Jakarta Globe, state palace defends its decision to increase rice imports up from half a million tonnes to 2 million tonnes due to the crop losses in Indonesia. Indonesian government is trying to avoid social chaos because according to their report, weather patterns have greatly affected rice productivity. This is what they're trying to tell the citizens, the government is building so many roads and so many rail lines and so many parking lots and so many malls or whatever, that it's dug into the agricultural productivity of the country and everyone is going to pay higher prices.

Lona Olivia & Novy Lumanauw | on 2:33 PM September 21, 2018



State Palace Defends Decision to Increase Rice Imports, Says Needed to Stabilize Prices

Jakarta. The State Palace stands behind its decision to [import up to 2 million metric tons of rice this year](#), as shrinking farmlands, drought and pests have amplified risks in domestic rice production and threaten price hikes.

["Weather, pests, and so on also greatly affect productivity,"](#) said Moeldoko, who also heads the Indonesian Farmer Harmony Group (HKTI).

So far, it's up 12% on the food inflation this year alone, so the government's trying to raise its stockpiles to two million tonnes the highest since 2011. There's a lot more going on behind the scenes and they're talking about, if production is truly down that much, there is a very serious problem in that country and Asia itself suffering from crop losses specifically with rice due to massive droughts across the entire continent.

Lona Olivia & Novy Lumanauw | on 2:33 PM September 21, 2018



Bulog's stock slipped 38 percent below the required low-end benchmark in March. The national average rice price hovered above Rp 12,200 (82 US cents) a kilogram in the first three months of this year, or [12 percent above its four-year average](#), according to Central Statistics Agency (BPS) data.

This prompted [the government to decide](#) in April to increase this year's rice import quota to 2 million tons – the highest since 2011 – [from its initial 500,000 tons](#)

Focusing here on a report “Indian Monsoon During Sunspot Peaks”, focuses directly on Indonesia.

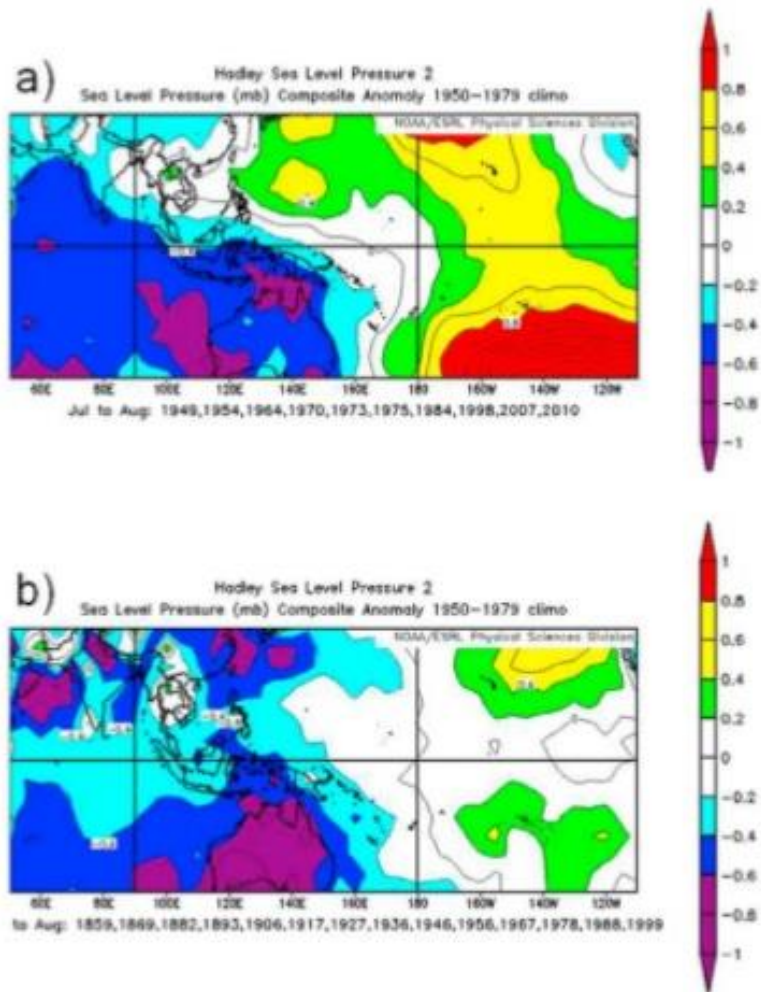
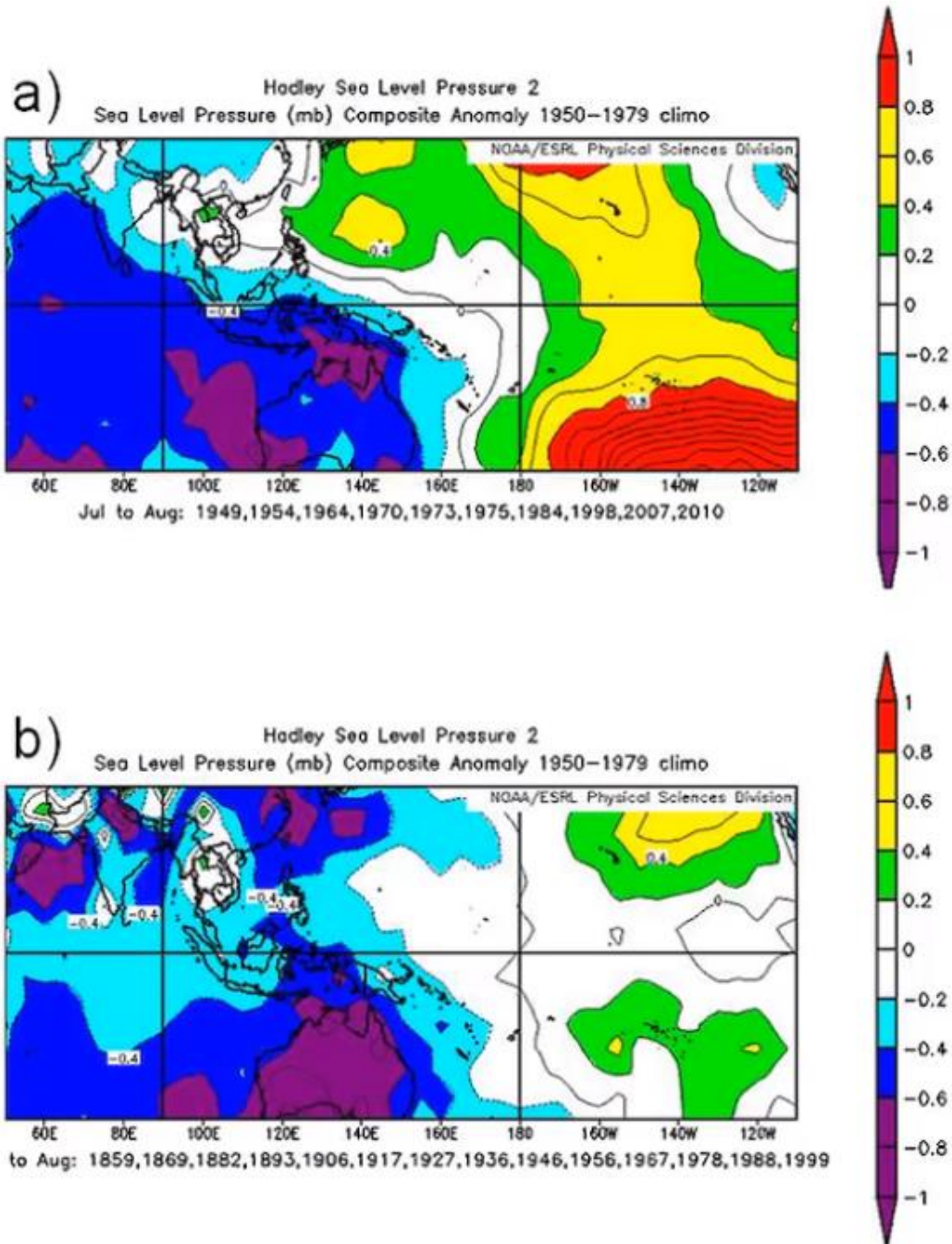
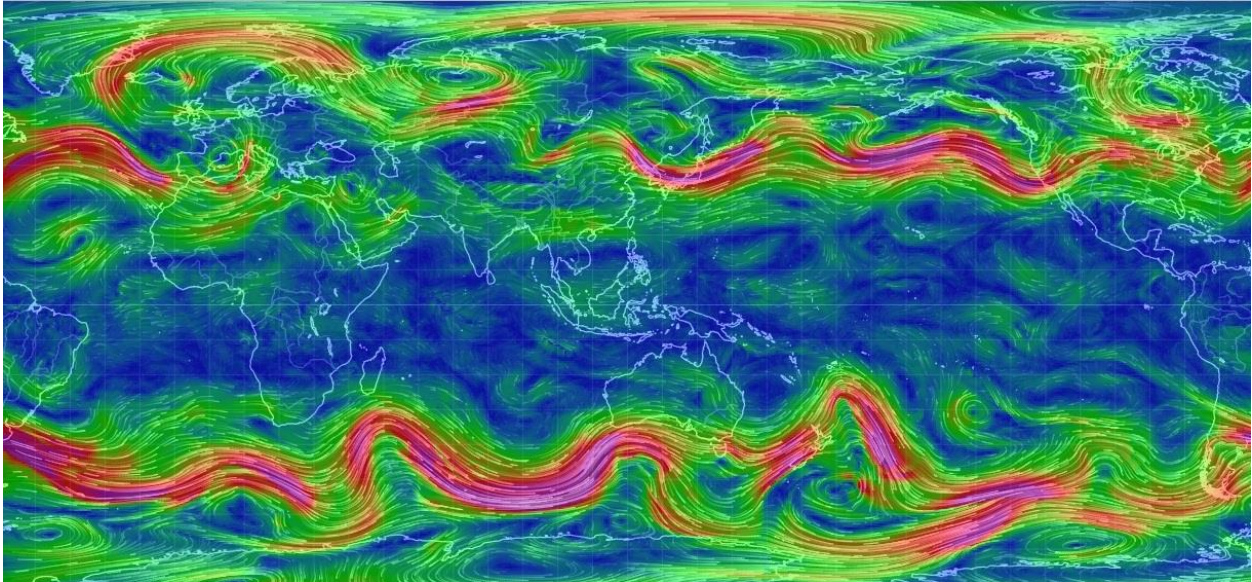


Figure 4. (a) Sea-level pressure anomalies in ten Cold Events (La Niña events) in the Southern Oscillation (hPa), July–August. (b) Sea-level pressure anomalies in 14 sunspot peaks (hPa), July–August.

It's more Southeast Asia centric. You can see how the moisture bands and the Intertropical Convergence Zone (ICTZ) shift during high solar activity or low solar activity. Now we're heading into a Grand Solar Minimum, so you would expect this to shift even further on a 400-year cycle.



What I mean by that is the jet streams. This is a representation this off of Nullschool.net 500 millibar jet stream flow, this is shifting, so are the moisture patterns. When you're seeing droughts and massive floods, these are literally moving in the sky into two different places because Earth's magnetosphere is weaker and these Jet stream bands are allowed to move into different places that they would not normally move. All the experts are baffled why the global crop production is down.



Jakarta Globe had a great rundown on additional stories Australia East Coast drought, global wheat supply crisis levels, Asia rice, India rates up as well. Now we have India, Indonesia, Thailand and Vietnam all with huge spikes in rice prices, major producers, now what do you think is going to happen to the price of rice?



Australia's East Coast Drought to Intensify as Dry Weather to Linger for Months



Australia's east coast will experience dry weather for at least the next three months, the country's meteorological bureau said on Thursday (30/08), intensifying a drought that has wilted crops and left farmers struggling to stay in business.

16:59 PM August 31, 2018

Global Wheat Supply to Crisis Levels; Big China Stocks Won't Provide Relief



A scorching hot, dry summer has ended five years of plenty in many wheat producing countries and drawn down the reserves of major exporters to their lowest level since 2007/08, when low grain stocks contributed to food riots across Africa and Asia.

20:00 PM August 22, 2018

Asia Rice: India Rates Up on Monsoon Lull; Flood Threat Looms in Thailand, Vietnam



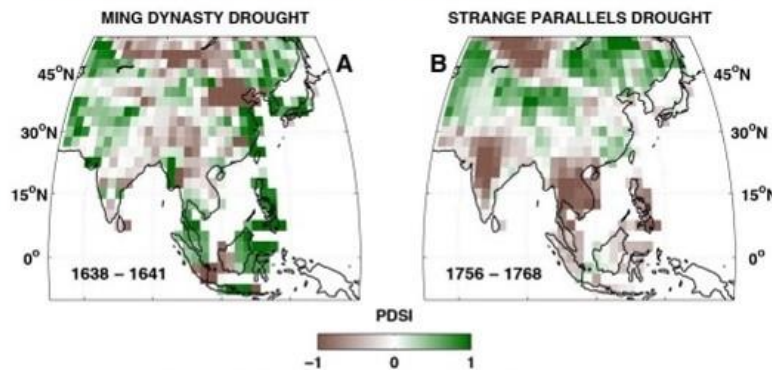
Rice prices in top exporter India rose this week on concerns of lower production due to below-normal rainfall, while traders in Thailand and Vietnam kept a close eye on the possibility of flooding in major rice growing regions.

02:00 AM August 04, 2018

If the Agriculture Departments in these nations would just look at a reconstructed historical drought from the spatial data they could see during Grand Solar Minimums how intense the droughts will be? Go back in history use a history book correlate and overlap and you can find how intense the droughts will be during this Eddy Grand Solar Minimum intensification.

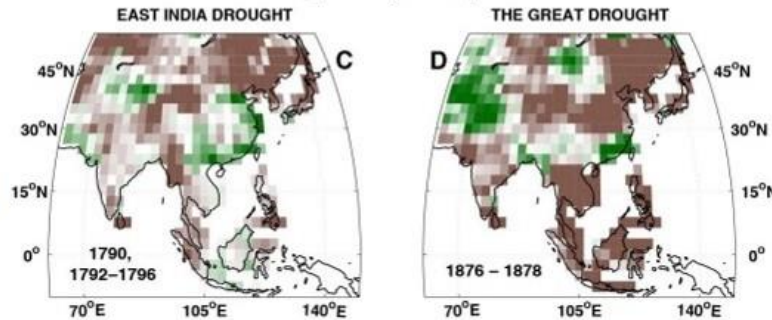
Some Reconstructed 'Historical' Droughts in Full Spatial Detail now from the MADA

Shen et al. 2007. Exceptional drought events over eastern China during the last five centuries. *Climatic Change* 85:453-471.

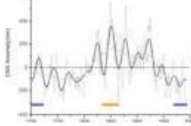


Lieberman, V. 2003. *Strange Parallels: Southeast Asia in a Global Context, C. 800-1830, Vol. 1.* Cambridge University Press, Cambridge.

Grove, R. 2007. The great El Niño of 1789-93 and its global consequences: reconstructing an extreme climate event in world environmental history. *The Medieval History Journal* 10:75-



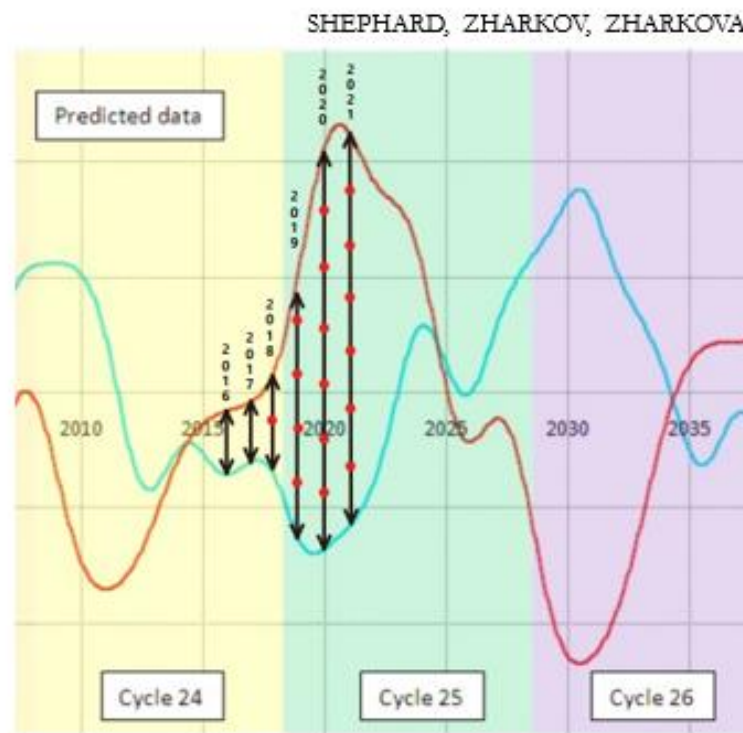
Davis, M. 2001. *Late Victorian Holocausts: El Niño, Famines, and the Making of the Third World.* Verso, London.



Dasuopu snow accumulation from Takata et al. 2009, PNAS

For those of you in the AG departments that don't really have an idea of how this Grand Solar Minima will intensify, here's the timeline for you. Rolling out to 2025, our danger zone is right now up to 2021 as the Earth tries to stabilize new jet stream positions and our crops are not going to handle this. We're going to have to move to new grows zones and yields are going to decrease significantly from this point forward. We're really at the cusp of the crop losses, and if it's already creating this much turmoil, can you imagine what its going to be like in three years when we get really heavy losses.

The shift of our global weather patterns are set to amplify 2x from July-Dec 2017, and from 2018-2019 a 4x shift, with another jump up as the spread widens to 6x in 2019. (I explain this in detail on pages 38-41)



If you like this type of analysis, take it on the go with Mini Ice Age Conversations Podcast, thirty minutes piecing together how the intensifying Eddy Grand Solar Minimum will affect your life over the next 5 years.

ADAPT 2030 My Patriot Supply Links: Take the fear out of difficult situations

2-Week Food Supply: (1,500+ calories/day with 92 servings)

www.preparewithadapt2030.com

Hearty Soups Kit with 104 servings <http://bit.ly/2A4c1hk>

*** ADAPT 2030 True Leaf Market Link ***

<http://www.pjtra.com/t/SkNITkxPS0xDR0xPRkdLQ0dLSUdOSw>

Content Created & Produced by David DuByne <http://www.oilseedcrops.org>

*** Today's Story Links ***

State Palace Defends Decision to Increase Rice Imports, Says Needed to Stabilize Prices

<http://jakartaglobe.id/business/state...>

Asia Eyes Argentine Wheat as Drought Curbs Australian Output

<http://jakartaglobe.id/international/...>

Other Rice and wheat reports around Asia <http://jakartaglobe.id/search/crops/>

WESTERN AUSTRALIA: CROPS PUNISHED BY TWO DEVASTATING FROSTS IN A MATTER OF DAYS <https://electroverse.net/western-aust...>

MIAC #105 Substantial Crop Losses Globally & The Economics of Rising Food Prices

<http://adapt2030.libsyn.com/miac-105-...>

ADAPT 2030



[ADAPT 2030 Mini Ice Age 2015–2035 Series on YouTube](#)

*** ADAPT 2030 Social Media Links ***

1.) PATREON www.patreon.com/adapt2030

2.) BITCHUTE <https://www.bitchute.com/hashtag/adapt2030/>

3.) STEEM <https://steemit.com/@adapt2030>



ADAPT 2030 (36)
Covering Grand Solar Minimum Intensification, Crop Losses, Cold
Weather Anomalies & Stories the MSM Refuses to Discuss
400 followers | 120 posts | 5 following
oilseedcrops.org | Joined August 2016

<https://steemit.com/@adapt2030>

*** Stories also on STEEMIT ***

4.) *** ADAPT 2030 True Leaf Market Link ***



*** ADAPT 2030 True Leaf Market Link ***

5.) Mini Ice Age Conversations Podcast

Libsyn: <http://adapt2030.libsyn.com/>

iTunes: <https://itunes.apple.com/us/podcast/adapt-2030-mini-ice-age-conversations/id1200142326>

6.) FB <https://www.facebook.com/Miniiceage>

7.) TWITTER <https://twitter.com/adapt2030>

8.) YOUTUBE www.youtube.com/user/MyanmarLiving



Medium

*** Stories also on Medium ***

9.) MEDIUM <https://medium.com/@globalcooling>

Weekly Podcast



Mini Ice Age Conversations Podcast is available on [iTunes](#), [Soundcloud](#), [Stitcher Radio](#) and [Libsyn](#)