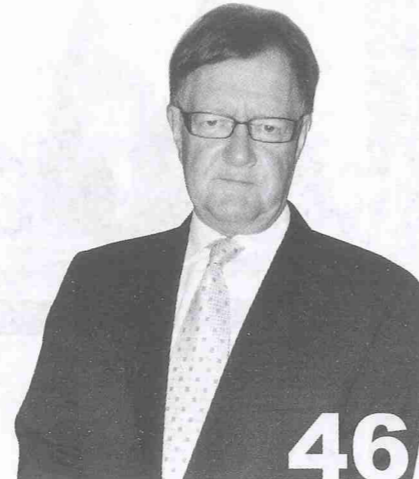


CONTENTS

January, 2013

- 2** - USEFUL CALLS
- 6** - HOW TO SPEAK IN MYANMAR LANGUAGE
- 8** - ACCOMMODATION (YGN)
- 12** - TOPICAL THEMES
- 20** - OTHER SERVICES (YGN)
- 28** - MYANMAR FOOD: TRADITIONAL CHANGE II
- 38** - A THAI-MYANMAR BUSINESS MATCHING
- 42** - TOURISTS' ADVISORY
- 46** - AN INTERVIEW WITH DR. JOHN A. QUELCH
- 50** - KOREAN BUSINESSMEN COME TO MEET
WITH MYANMAR COUNTERPARTS
- 53** - ACCOMMODATION (MDY)
- 56** - OTHER SERVICES (MDY)
- 59** - ACCOMMODATION (NPT)
- 60** - OTHER SERVICES (NPT)
- 61** - INTERNATIONAL FLIGHT SCHEDULES
- 65** - TOURIST ARRIVAL
- 66** - HOROSCOPE



TODAY

January, 2013

ISSN - 1029-9009

ADVISORY GROUP
TOURISM PROMOTION DEPARTMENT
MINISTRY OF HOTELS & TOURISM

EDITOR-IN-CHIEF

Dr Tha Tun Oo

EDITOR

Wah Wah Swe

ADVERTISING SECTION

Saw Wunna Kyi (Manager)

Soe Min Htike

ART SECTION

Yan Naing, Zar Lin Htet

COVER PHOTO

Myat Khaing

PRODUCTION SECTION

Aung Moe

COLOUR SEPARATION

Master, Sein

PRESS

TODAY Printing Co Ltd (P- 05541)

BINDING

Ko Maung Naing

PUBLISHER

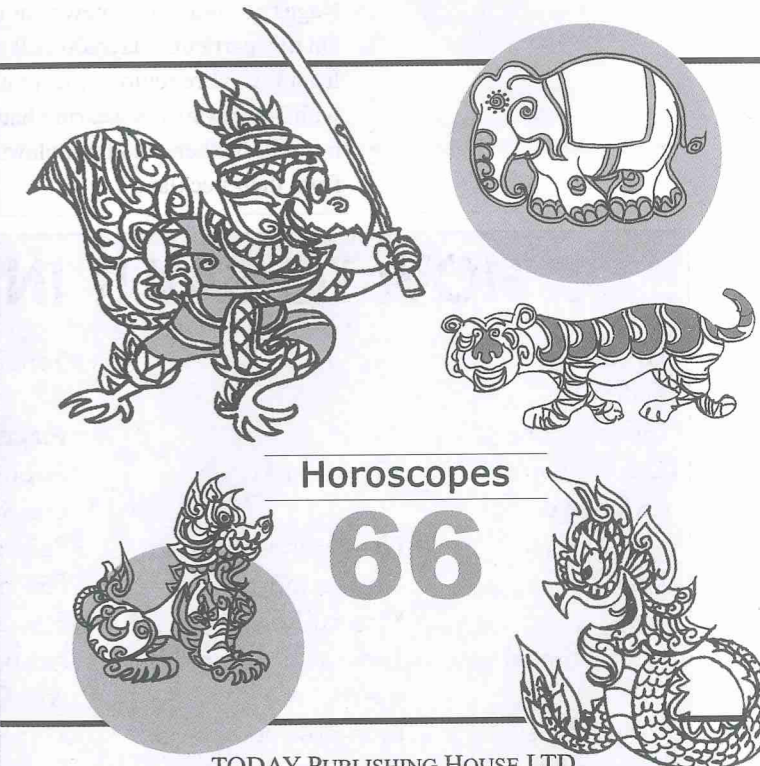
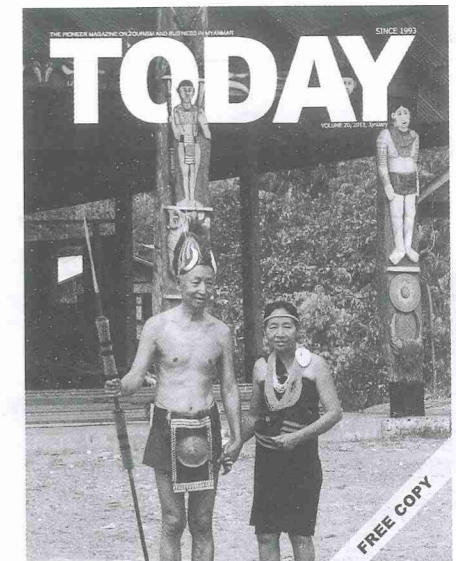
Dr Tha Tun Oo (P-03759)

CIRCULATION

5,000 Copies

EXECUTIVE DIRECTORS

Dr Aung Tun, Saw Yan Naing, Moe Thè



TODAY PUBLISHING HOUSE LTD
Bldg H, Kan Yeik Mon Housing Estate, Hlaing Myint Mo Kan Street,
Hlaing Township, Yangon (11051) Tel: 951-507391, 507392, 507385,
09 73109812, 09 73109813

Fax: (95-1) 507390 E-mail: today@today.com.mm

f : Todaymgz Myanmar

BRANCH :

No 4 , 26th-B Street, (BET: 78th Street & 79th Street)
Meeyahta Teik Tan, Chan Aye Thar Zan Tsp, Mandalay.
Tel: 09-73243269, 09-91027524

All rights reserved. No part of this publication may be reproduced in any form or by any means,
without the prior permission of TODAY PUBLISHING HOUSE Ltd.

To read online version, please visit <http://www.today-myanmar.com/>

COVER PHOTO



Photographer - U Myat Khaing
Camera - NIKON D7000
Location - Pan, Hkamti, Chin State. 'Pan' means the palace where the newly wed have to stay together apart from their parents after their marriage.
Cover Photo Making - I went there with the Peace Meeting Group during the rainy season. Nowadays they no longer wear their traditional costumes except in the remote region. But they all still wear "Hpa Ye" like tattoo. When I was about to take that photo the lady told her husband to take off his underpants as it was not their traditional clothing, but he didn't want to do so.
Subject - Naga New Year
 Nagas celebrate their new year on 15th January each year. On this particular day you will see a unique gathering of Nagas from the entire region in festive mood. You will be busy shaking hands with Naga warriors wearing hats made from bear fur, wild boar tusks, hornbill feathers and tiger claws. Some also have tiger fangs hanging from their necklaces.

HOW TO SAY IT IN MYANMAR

Greetings

Hello!
 Good morning!
 Good afternoon! - Min-ga-la-ba.
 Good evening!
 How are you? - Nay-kaung-bar-yè-lar
 Fine, thanks - Nay-kaung-bar-dè,
 Kyay-zu-bar-bè.
 Glad to meet you. - Tway-ya-dar-wan-tha-
 ba-dè.
 My name is ... - Kyun-daw-nar-mè-ga ...
 What is it? - Di-har-ba-lè?
 Can you speak English? - In-ga-leik-lo-pyaw-
 dat-tha-lah?
 Can you help me? - Ah-ku-ah-nyi-taun-pa
 -ya-say.
 Beg your pardon. - Pyan-pyaw-ba.

Sorry! - Wan-nè-bar-dè/Ma-
 taw-lo-bar.

Places

Airport - Lay-zeik
 Bus Stop - Kah-geik
 Railway Station - Mee-ya-htar-bu-dar-yon
 Police Station - Yè-sa-khan
 Embassy - Than-yon
 Hospital - Say-yon
 Post Office - Sar-daik
 Market - Zay

Directions

Which way? - Bè-lan-ga-thwah-ya-ma
 -lè?
 I want to go to - . . . go-thwah-jin-bar-dè.
 How far? - Bè-lauk-way-tha-lè



GULF TRAVELS & TOURS

your reliable travel agency in myanmar

We offering International & Domestic air tickets at very reasonable rates

✂ International & Domestic special flight Chartering Service

✂ Door to Door Service

✂ International & Domestic Air-Ticket

✂ World Wide Hotel Service

✂ World Wide Visa Service

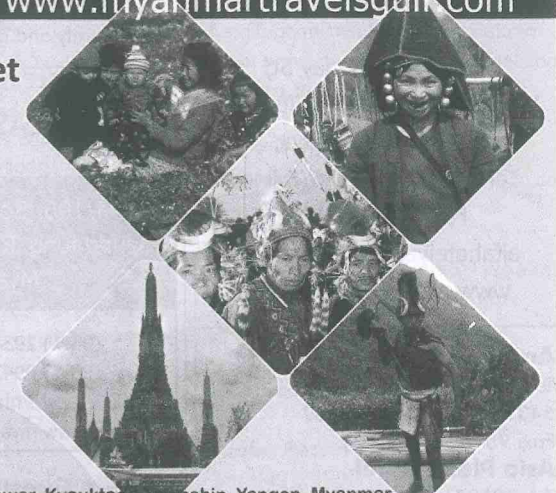
✂ Car Rental Service

✂ Special Package & F.I.T Tours

✂ Electronic - Departure Form

www.gulftravelsmyanmar.com

www.myanmartravelsgulf.com



No (67), Sule Pagoda Road, Near Center Point Tower, Kyauktada Township, Yangon, Myanmar.
 Tel/Fax: (+95 1) 386687, 249187, 374316, 378235, 378236, 378237. Email: gulftravels@myanmar.com, mm/gulftravels28@gmail.com

home decor and beautiful things
 for every smart home



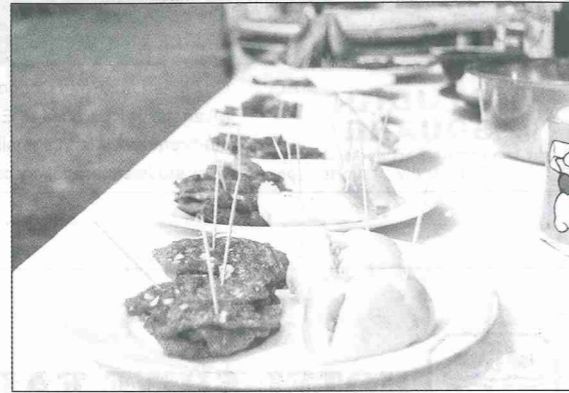
Wooden Statues,
 Lacquer Wares,
 Furniture,
 Bronze Wares,
 Burlwood Products.
 Hand Crafted Accessories,
 Mother Of Pearl and
 Sea Shells Products.
 Puppets.
 Tapestries
 Gemstone Picture

HP : 95-9-5052371
 : 09-49308936

Shop(1) : No.83, Central House, Bogyoke Aung San Market, Yangon. Tel : 09-73243061
 Shop(2) : No.3077, Second Level, Taw Win Centre, Pyay Road, Yangon.
 Tel : 95 1 8600111 (Ext:3077)
 Shop(3) : No.C-107, First Floor, JUNCTION SQUARE, Pyay Road, Yangon.
 Email : tectona32@gmail.com website : <http://www.aungwood.com>

TOPICAL Themes

Myanmar Food Competition and Sale



A snacks competition and sale event organized by Seinn Lann Kabar Co.,Ltd was held at the Seinn Lann So Pyay Garden Restaurant, on 28 November 2012 to mark the full-moon day of Tazaungmone. The opening speech was delivered by Managing Director of the company

U Ne Lin, who explained the aim of the competition, and Domestic Science school headmistress (Rtd.) Daw Tin Tin Aye explained the marking system for the competition in which 4 Groups took part. The snacks to be cooked were Myanmar snacks and the time allowed was 2 hour.

It was the second time the company had held this competition. It was held first in 2010 and every year since then the company has held similar events on various Myanmar cultural themes. From 4 to 6 January 2013 it will hold childrens' painting competition and sale of indigenous people's foods. From 12 February, the Union Day, to 13 February, there will be an exhibition and sale of costumes of various Myanmar nationalities.



MAI extents domestic flights with two Embraer 190s



Plans are underway to replace the overage airplanes of Myanmar Airways International with new ones by the Ministry of Transport. Managing Director U Than Tun of Myanmar Airways and party received the newly-bought Embraer 190 aircraft on 16 November, and now the new aircraft was flying from Rome in New York of the United States of America to Myanmar. It will arrive in Yangon on 12 December. A team led by the general manager of MAI will receive the second Embraer 190 aircraft on 18 December, and it is expected that the second one will arrive in Yangon during the first week of January 2013.

These two new Embraer 190 aircrafts developed by EMBRAER 190 Aviation Company in Sao Jose Jos of Brazil were hired from General Electric (GE) of USA. The performance of the engines fitted in 100-passenger Embraer 190 is excellent. These GE-CF 34-8 Engines are supplied by GE of USA. Further-

more, the Embraer 190 offers passengers more spacious seating than Airbus A320 and it has more under seare storage space than other Regional Jets. 90 percent of spare part which were already available in the market can be fitted in Embraer 190 model aircrafts. Space parts for Embraer 190 can be bought at reasonable prices and maintenance cost is cheap. International airlines eye on Embraer 190 aircraft as there was only one flight accident its aviation history. So Republic Airways and Compass Airlines are customers of Embraer. MAI will use these two new aircrafts to operate the flights to Gaya of India, Chiang Mai of Thailand and local airports where Fokker F-28 was used to be landed. With the aim of substituting overage F-28 aircrafts with the new ones, MAI hired new Embraer 190 aircrafts. Now pilots and engineers are under training with simulators at FSI in France to be able to operate Embraer 190.

Kyemon

Myanmar Airways Launched Advance Ticket Sale

Domestic airtickets can now be bought about 2 weeks ahead, according to one of the supervisors at the Mandalay Myanmar

Airways branch office. The sale starts on 18 November, and service charge is 1000 kyats.

Mandalay - Bagan Water Transport to Resume Daily Service

The "Shwe Kain Nayi" motor vessel services that were suspended for some time are now back on the route between Mandalay and Bagan. Three vessels will be part on daily service, leaving Mandalay at 7 am and Bagan at 6 am, said an official of the company operating the service with "Shwe Kain Nayi" vessels hired from the Inland Water Transport Department. The Mandalay-Bagan tickets are 40 dollars for foreigners and Bagan-Mandalay tickets are 35 dollars. For tour guides and local travellers it is 12,000 kyats. At present the Mandalay-Bagan boat trip in



operated by the Inland Water Transport Department two days a week and by the private-owned Malikha company four days a week. ☰

1st Myanmar travel & trade expo 2013

1st Myanmar Travel & Expo 2013 will be celebrated on 11-14 January 2013 from 09:00 am to 08:00 pm at Myanmar Convention

Centre, MCC. The event was to be organized by Myanmar Tourism Federation. ☰

FMI eyes to lead auto market in Myanmar

For the development of auto assembling and manufacturing industry in Myanmar, FMI company has planned to expand its auto industry in cooperation with international auto makers.

Aimed at setting up a Hino Service Station (HSS) that will be the first of its kind in Myanmar, FMI signed an agreement with Hino Motors Ltd in August 2012, and plans are underway to start the business in March 2012.

Likewise, Successful Goal Trading Co Ltd, the sole distributor for Dongfeng trucks in

Myanmar, will open a showroom in Mandalay soon in a bid to penetrate the upper Myanmar market. Besides, Holland-made tractors and farm equipment distributed by Convenience Prosperity Co Ltd are available at the market, and plans are underway to establish a chain of showrooms and service centres in regions and states. According to the press release of annual general meeting of FMI, a showroom and a service centre will be kept open in Hlinethaya soon. ☰

Kyemon

Asiana Direct Flight to Myanmar from Seoul



From 19 December 2012 the Asiana airline launched a nonstop service from Seoul to Yangon. The flagship carrier operate the service two times weekly using a 290 seat Boeing 626. The Yangon - Seoul flight is Thursday and Sunday

morning 00:50 AM and Seoul - Yangon flight is Wednesday and Saturday evening 19:30PM. For more information you may contact the temporary Asiana Airline office at La Pyay Wun Plaza. Phone No. 95-1-372382, 393205. ☰

Visitor Arrivals by Visa Types at Yangon Int'l Airport

Mon th	Flight		F.I.T (Individual)		Group Tours		EVB (Business)		EV (Social Visit)		Others		Total		%	
	2011	2012	2011	2012	2011	2012	2011	2012	2011	2012	2011	2012	2011	2012		
Jan	592	627	13694	20782	11186	13782	4901	7402	4010	3820	2174	2457	35965	48243	134%	
Feb	543	602	12585	21390	13379	14289	5071	9420	2994	2962	1500	2182	35529	50243	141%	
Mar	636	643	13574	19425	10583	12082	6285	9408	3069	3207	1790	2272	35301	46394	131%	
Apr	610	627	7843	12631	5795	6512	4288	6719	2323	2397	1866	2791	22115	31050	140%	
May	586	632	8034	14432	4452	5506	5765	9632	2261	2569	1665	2650	22177	34789	157%	
Jun	564	601	8066	13454	3304	4220	5704	8660	2398	2526	1685	2966	21157	31826	150%	
Jul	616	609	10011	16379	4772	5270	6094	9738	2600	2842	1957	4139	25434	38368	151%	
Aug	558	623	9092	16418	4922	7165	5571	8667	2078	2374	1849	3869	23512	38493	164%	
Sep	526	652	8148	13729	4145	7139	6179	10346	1941	2195	1734	4344	22147	37753	170%	
Oct	614	812	10950	21780	10891	15715	6824	11785	2466	3012	1878	4949	33009	57241	173%	
Nov	590	916	14136	28503	12837	19019	6967	11774	3415	4323	1858	5664	39213	69283	177%	
	6435	7344	116133	198923	86266	110699	63649	103551	29555	32227	19956	38283	315559	483683	153%	
													Daily Average Arrivals	942	1444	(+502)

Korea-Myanmar Medical Tour Forum



The Korea-Myanmar Medical Tour Forum organized by Korea Tourism Organization and Medical Korean wave was held at the Sedona Hotel on 26, November 2012.

The chairman of the meeting introduced the Korea participants to Dr U Myint Thein, Yangon regional Health Minister and other Myanmar officials. That was followed by a speech by Mr Jin Soo Nam, chairman of the Korea Tourism Organization. After that messages of talicitations were read by Health Minister U Myint Thein, UMFCCI chairman U Win Aung,

Myanmar Health Organization chairman professor U Kyaw Myint Naing and the Korea CU Medicare chairman Lee Soung Young. By representatives of Korean CU Medicare, Soon Chun Hyang University Hospital, Hershe Plasitic Surgery & Dermatology, Hanyang Universty Hospital, Green Cross Healthcare Center, Sam Medical Center, Incheon Hospital 21 and Good Medical Center on their activities and services. After lunch, the meeting resumed with a programme on Korea Myanmar Medical/ Hospital Business Matching and consulting.



Visas on Arrival

Now Being Issued to:		To be Issued to:	
	Cambodia		Canada
	Korea		Czech Republic
	Japan		Greece
	Germany		Slovakia
	Singapore		Slovenia
	Spain		Cyprus
	Switzerland		Netherlands
	Sweden		Portugal
	China		Poland
	Thailand		Finland
	Taiwan		Belgium
	Denmark		Bulgaria
	Newzeland		Malta
	Norway		Romania
	France		Luxembourg
	Philippines		Latvia
	Vietnam		Lithuania
	England		Austria
	Brunei Darussalam		Hungary
	Macao		Israel
	Malaysia		Estonia
	Laos		Ireland
	Austrilia		
	Hongkong		
	America		
	Indonesia		
	Italy		
	India		

25 Years of Golden Valley Art

"Silver Jubilee Art Show" was on 5 December 2012 to mark the 25 anniversary of the "Golden Valley Art Centre at 54/D, Golden Valley, Yangon. On show were over 45 paintings by 45 artists. The invited guests were each presented with a gift painting.

The following are what some of the artists present on the occasion said:

U Khin Myint Aung, artist

"I have 40 painting by me on display here. 4 of them are to be given to the invited guests as gifts. I'm very much delighted to have been working here together with fellow-artists for so long up to this jubilee. As a beginner I'd had nowhere to put my works on show, until I got here."

U Tin Win (Mdy) artist

"I'd never until now, got the idea of holding such' a formal gathering of fellow-artists. We're then only interested in painting. Now we're glad to take part in this 25th anniversary. Here I have 16 painting by me, dedicated to this exhibition. I've decided to help in whatever way I can do in handing down my skill and knowledge to the younger generation."



U Hlaing Bwa, artist

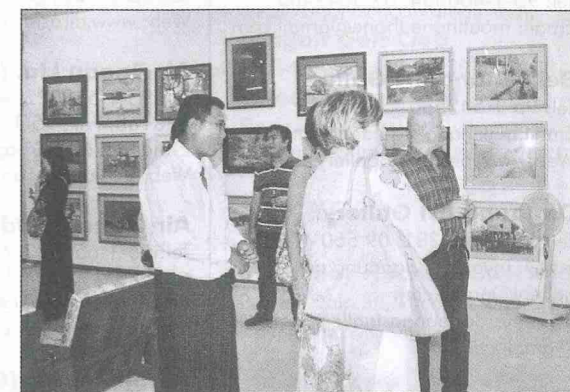
"I have 10 paintings on show here, with creations in colours. I'm very glad to see many fellow-artists on this occasion here".

U Pyi Son, artist

"I'm glad we've come to a 25th year of our efforts together. The owner of the Centre has been our friend since our day at the fine arts school. He was very keen an painting, but he could not do any painting, because , I'd like to say, he's been busy creating means of livelihood for nearly thirty artists.

Mr Azril Abril Aziz Deputy Chief of Mission Malaysia Embassy

"I'm happy to see the GV Art Gallery has lots of very good and intelligent artists and lots of paintings. They have a lot of potential. Hkaing Bwa, Moe Moe Win, Mg Win Cho_ they are my favourites among all the paintings here."





Mok Let Saung

MYANMAR FOOD: TRADITIONAL and CHANGE II

Dr Thaw Kaung with the assistance of Dr May Moe Nwe

The parcel crepes are delicious.

Another drink from Thailand is mok-let-saung, green coloured rice jelly strips served with cooled coconut milk mixed with jaggery or sugar. The Myanmar name comes from the Thai *lout chaung*, *mok* being the Myanmar generic word for any cake or snack.

Dining Room and Tables

There is usually a separate dining room for meals, located between the living-drawing

room where guests are received and the pantry and kitchen, at the back of the house. If a separate room is not available, at least a segregated or partitioned part of a larger room will be made for the table where food is consumed.

Traditionally Myanmar people have used small round tables only about one foot in height, where the family would sit around on floor mats, each with a platter of cooked, boiled rice with the meat, fish, vegetable dishes and the soup bowl placed in the centre with a



few spoons for all, making it easy for those sitting around to dip into what they want to eat with their rice. It is similar to the Thai traditional way of eating.

Nowadays, since colonial times from around mid-19th century, higher western style dining tables and chairs have been used especially in the towns and cities, though in the villages where about 75 percent of the people live, the peasants still prefer the low round tables for the family to sit around on mats to eat. Max and Bertha Ferrars in a book profusely illustrated with good photographs taken by them and published in 1901 wrote that the old style of eating was having the dishes placed in a huge woven bamboo round tray on the floor

Nearly 90 percent of the people of Myanmar are Theravada Buddhists and they practice a food culture related to their religion.

and the "new" style with the small round slightly raised tables.

The food is delicately eaten only with the right hand, using all the five fingers only up to the second (or middle) joint with rice picked up, mixed with a small portion of either meat or vegetable dish. Spoons were used in earlier days only for soups, as it was not drunk from a bowl like the Japanese. The Myanmar style of eating with the fingers is not as genteel as the Thais where only the three middle fingers are used.

From colonial times European style forks and spoons and table knives have become more common in the majority of houses in the

urban areas, with separate smaller bowls of soup for each person which can be refilled by maids and helpers throughout the meal. Usually there is also a central dish with fresh or boiled vegetables and a small bowl of dips made from fish paste; this is eaten as a relish.

As we have not adopted the European manner of serving food course by course, but eating all the dishes together with the rice, the traditional small round tables are ideal for a family meal. But in modern times no one likes to sit on the floor, so guests and a long table has to be utilized, usually two sets of curries, soups and dips are put on the table, as they should all be, ideally, within easy reach of everyone.

Even the Buddhist monasteries which are very conservative and have been using the traditional small round tables for ages, are changing in the last decade especially for lay guests at special feasts, by replacing them with modern tables and chairs, though many of the monks will only eat at the traditional low tables, sitting on small carpets or mats on the floor.

Eating Out

Consuming our daily food at home is convenient and bonding for the family members. At the same time Myanmar people occasionally like to eat out for variety and change depending on your time and the expendability of your purse, same as with other people all over the world. Some dishes are too time-consuming and complicated to cook at home and easier to pay and enjoy hassle free at a cafe or restaurant, and of course some non-traditional dishes are available only outside the house and have not come into our kitchen for daily fare. Also, we like to entertain guests sometimes with special food not available in our houses.

In towns and cities there are many tea and coffee shops which open early where you can enjoy a breakfast not only of mohhinga,

but Chinese dumplings (called pauk-si) deep fried twisted dough sticks called ee-kya-kwei (from Chinese youzha qyi) and also some ethnic dishes like Shan noodles, or European style patties, sandwiches, dim sums and many other tasty morning snacks.

For breakfast we can have mohinga at home but many go to the famous mohinga sellers like Tin Tin Aye or Myaung Mya Daw Cho and Sanpya Daw Kyi. Some take a fancy to special broths which are supposed to have originated in regional towns like Hinthada or Kyaiklat, as some of the fish gravy-soup are different from the usual common one, for example the Rakhine *mohinga* with its clear fish soup, with nga pi (fish paste) but no banana pith, spiced up with ample applications of fiery pepper.

In the last fifteen years or so, Dim Sum shops have become very popular for breakfast and lunches, a new innovation formerly not found in Myanmar, coming from China, especially Hong Kong, and some Southeast Asian countries like Singapore and Thailand where dim sum have been popular for many years.

Earlier, Indian food have been popular for eat outs to enjoy many varieties of parata, chapatee, roti, dosa which the Myanmar call to-shay (short and long) with dhal or hot spicy curries, both vegetable and meat.



Dim Sum

When Myanmar first became incorporated into the British Empire parts of Myanmar along the coast Rakhine (Arakan) and Taninthayi (Tenasserim) from 1826, and later from 1886 the whole country, she was governed as a province of India right up to 1937. During those (90) years many Indians came over to settle in Lower Myanmar. At one time Rangoon, the capital before World War II, was more of an Indian city; Indian cuisine therefore became popular with the Myanmar not only in restaurants but also entered home cooking or take-aways eaten in the house.

Up to early 1960s there were many Indian eateries centred around Mogul (now renamed Shwebontha) Street with an open air night market area opposite the Scott (Bogyoke) market where Indian food vendors would noisily and rather aggressively entice passersby to eat at their small stalls, vying with each other to get as many customers as possible.

But by 1964 when the massive nationalizations of private businesses and factories took place under the socialist, military, Revolutionary Government, thousands of Indians left, special ships being sent to pick them up. Since then Indian cafes and restaurants have gone down drastically in number; but from the 1990s many more Chinese have immigrated across the border from Yunnan and big cities like



Roti

Yangon and Mandalay are now full of Chinese food outlets, from small pavement stalls of Chinatown to expensive upbeat restaurants like Shwe Bè, (Golden Duck) which are popular with the growing number of the newly rich upper class.

Myanmar food outlets also abound all over the country. In Yangon a popular chain where authentic, tasty Myanmar food at reasonable prices can be obtained is the Danubyu Daw Saw Yee, Myanmar restaurants (named after the lady who founded them, originally from Danubyu town on the Ayeyarwady delta). Another popular restaurant for

The monks do not officiate at weddings or other social gatherings as they have renounced the world to live religious lives in the seclusion of their monasteries. But newly weds often offer swoon-chway meals to monks, at a monastery or at their home soon after.

typical Myanmar food is Shwe Bè though it is not the official name, but the name of a popular actor (known for his tough fighting skills) who used to frequent the original restaurant in Mye-nigone at the northern foot of the famous Shwe Dagon Pagoda which towers above Yangon.

A new restaurant chain now becoming very popular in recent years is "feel", found in Yangon (several outlets), Pyin-Oo-Lwin (Maymyo, on the Shan Plateau) and along the Yangon-Naypyidaw (new capital about 275 miles north) highway. At "Feel" not only typical Myanmar dishes, but Thai, Chinese, Malay and

Indian food are also available.

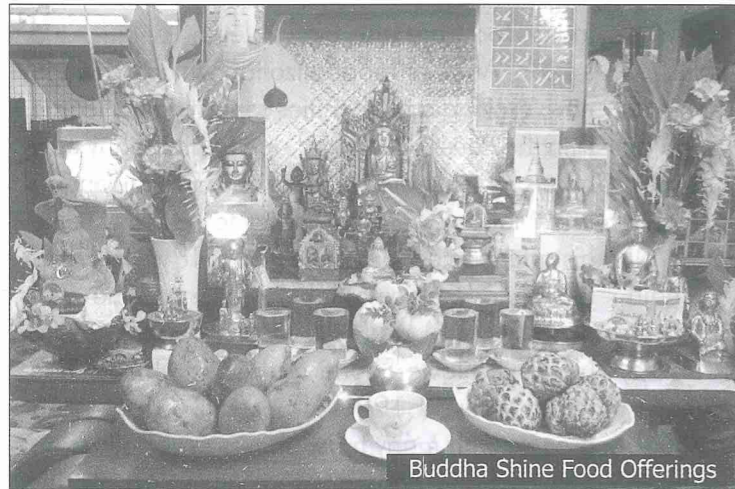
Another modernization which provided new, exciting opportunities for eating out came with the construction and opening of many new hotels housing high class restaurants in Yangon and Mandalay. Also in other tourist towns like historic, ancient city of Bagan (11th to 13th century), Inle (a place of lake-dwellers on the cool Shan Plateau) and lovely seaside resorts like Ngapali, Ngwe Saung and other places. This began around 1990 and is still an on-going process with many hotel chains especially from Thailand, Singapore, and China in north-eastern border region, opening various types of hotels from grand ones like Kandawgyi Palace built by the Baiyoke group and Chatrium (Thai), Sedona and Traders (Singaporean), to smaller Yunnan style hotel in border towns.

This rapid development in the last decade of the 20th century came about with the military government opening up of the country to foreign investment after abandoning socialist policies in 1988.

Now we can go to Japanese style restaurants with low tables where it is possible to put your feet down into a recess in the floor. Good tasty sushi, tamura and various other Japanese food are now being enjoyed by the Myanmar, especially the growing number of a rich upper middle class and the elite of the country. Also Korean, Thai and Western cuisine is available in some hotels.

Western style buffets, International, Asian, seafood, etc. are also popular, together with barbecues and grills. Many beer pubs have also been opened and become places where snacks and barbecues are also enjoyed by young men and women in the evening.

Smaller cafes like Black Canyon from Thailand have outlets in Yangon, and the Myanmar have found Thai food very palatable to their taste.



There are also a few Italian restaurants with pasta and pizza, and French ones where even truffles and frog-legs can be ordered. Before long McDonalds and KFCs outlets, will be starting in Myanmar.

FOOD CULTURE AND CUSTOMS

Religious and Social

Nearly 90 percent of the people of Myanmar are Theravada Buddhists and they practice a food culture related to their religion.

At morning prayers, soon after getting up, a tiny portion of cooked rice from the family pot, together with a thin slice of fruit, or a small cake or two is offered in front of the Buddha image, at the altar in the shrine room found in all Buddhist homes. There are usually also a few tiny cups of water together with flowers, candles and incense.

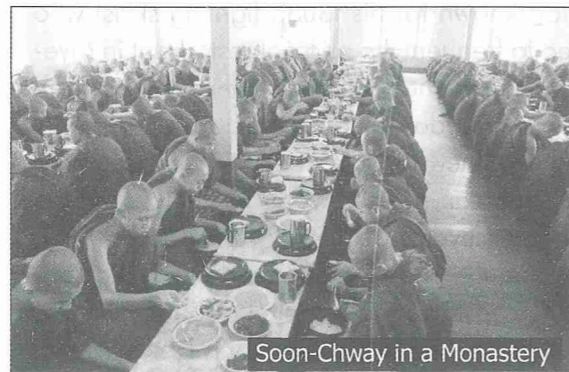
Once or twice a year, at birthdays death anniversaries or some special occasion in family life like a naming ceremony of a new-born infant, a wedding or a funeral, several monks are invited for a dawn (5:30- 6:30 am), or morning meal (between 10:11 am) for traditional Myanmar food or one-meal dishes like mohinga, ohn-no khauk swe (coconut soup noodles) and

some offerings of uncooked rice, biscuits in tins or packets and other dry foodstuffs, including cooking oil for the monastery are given.

There are two parts to these ceremonies, the first part where the monks officiate, where dry foodstuffs and other gifts are offered, prayers recited, a short sermon delivered by the chief abbot and the merit thus accrued shared both with the living and the dead. The monks then partake a meal and leave.

After the monks have departed, the second part of the ceremony which is purely social will begin. Relatives and friends will all join together in a feast, a meal of traditional Myanmar food or as mentioned earlier of one dish meals. The monks do not officiate at weddings or other social gatherings as they have renounced the world to live religious lives in the seclusion of their monasteries. But newly weds often offer swoon-chway meals to monks, at a monastery or at their home soon after.

Food offerings are often given at monasteries at swoon-chway in the morning, because the monks keep sabbath from noon to dawn the next day when no solid food is eaten, but only nonalcoholic drinks are allowed.



Food offerings can be of two kinds: soon which is cooked rice together with various curries, or soon-hsan-sein, when uncooked rice and other "dry" foodstuffs are donated. It can be at the monasteries, or during the daily rounds the monks and novices make in the morning to collect cooked food in their black bowls. Buddhist devotees will wait at their gates and put into the monks' bowl spoonfuls of rice and curries which the monks are supposed to eat all mixed together with various curries from each household as their precepts allow them to consume food only for nourishment, to sustain life, and not for enjoyment. But this Vinaya rule is seldom strictly followed except by a few very disciplined sects like the Shwe-gyin. In the month of Tabaung (usually around mid-March to early April) normally on the Full-moon Day, devotees will offer uncooked food, rice and cooking oil, together with other requisites of the monks from new yellow robes to candles, also what is known as "dry rations": biscuits, sweet, canned food, and so on. This sort of offering of uncooked food and other "preserved" food is also offered at novitiation ceremonies and when all Myanmar males have to enter the monk hood at least once in their life, usually at age 20.

Offerings to Nats

Although about 90 percent of the Myanmar have been Buddhists for over a thousand years, underneath the tolerance and moderation of the Middle Way of their religion has survived earlier animistic beliefs and the strong influence of the nat spirits who have to be propitiated with food offerings.

Each village hut and also many houses in the towns and cities have a lower altar below the one for the Buddha images; this is for food, flowers, fruits and candle offerings to the nat spirits. Sometimes these altars, or spirit shrines

are in a separate area, but usually not far from the main Buddha shrine in the house, though unlike the Thais, the Myanmar do not build beautiful Phi spirit shrines in their front garden or compound.

The food offerings are not elaborate. There is usually a large green coconut with a sprig sticking out for Maha Giri, the "Lord of the Great Mountain", who heads the main 37 Nats venerated by many Myanmar. Some bananas and other fruits are also offered.

Outside the house under big banyans or other large trees can be found little shrine houses for the tree nat, the yoke-ka-soe. Different regions or ethnic groups of Myanmar also have their own nats or guardian spirits as among the Mons, the Shans, Kachins and Chins, where various types of cooked or uncooked food are offered to placate them and get their protection and assistance.



Social Customs

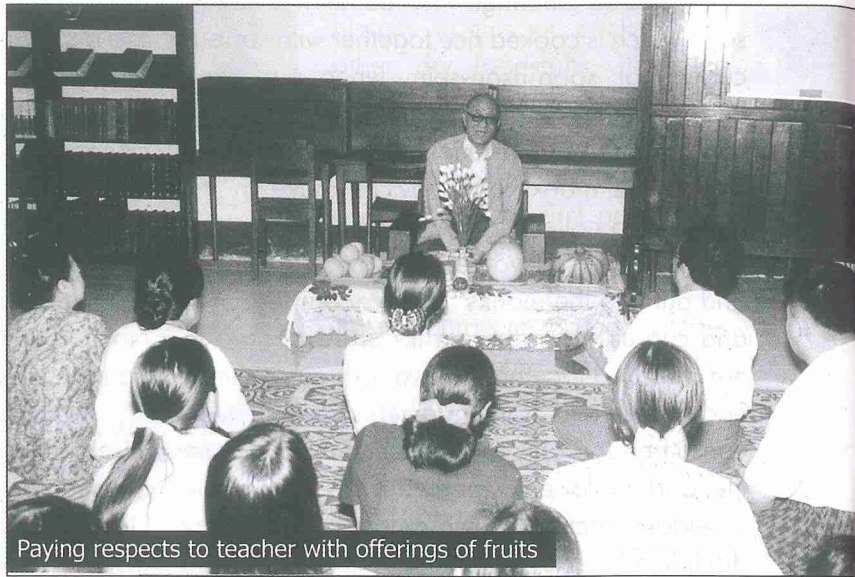
There are several social customs related to food such as younger people putting a spoonful of various dishes on the rice plate of elderly persons who are eating together on the same table.

Every year at the beginning and end of the Buddhist Lent (during the monsoon rains from about June to September) younger relatives or former students will bring some uncooked food, especially fruits when they come to pay respects to their elders, parents and

teachers. Parents are also brought such food-stuffs by their children, nephew and nieces, as food forms an important ritualistic role and bonds the extended family.

The Myanmar have monthly festivals throughout the year, usually on full-moon days, as traditionally they have used a lunar calendar. Some foods are made in connection with certain festivals, for example during the month of Tabodwe (usually between February and March) a sticky rice dish is cooked with peanuts, shredded coconut, seamum and ginger in large frying pans over an open fire in the garden. It is called htama-nei, which is shared with friends and relatives, a seasonal delicacy much appreciated by Myanmar people.

In Lower Myanmar, especially in the Mon State around Mawlamyine (Moulmein) at the Myanmar New Year (usually in mid-April) water festival and throughout the hot summer months when green mangoes are just right for making salad, a delicacy called Thingyan hta-min (Thingyan New Year rice) is eaten; it is cooked rice loosely soaked in cool fragrant water, eaten just with fried pounded, dried fish, or prawns



Paying respects to teacher with offerings of fruits

and a salad made of green mangoes mixed with pounded dried prawns, fish sauce, onions, etc.

Although these seasonal delicacies have not changed, with modernization and the importing of foodstuffs from abroad, there is now much more variety in the type of food offerings in social and religious ceremonies.

Instead of the traditional mohinga, monks are often offered Indian barayini rice called dan-bauk, or Chinese noodle dishes and Thai soups and curries.

Also at paying respect to elders and teachers ceremonies, canned food, imported apples and pears, even kiwi fruit from New Zealand, or "sun-kissed" oranges from California are now given as offerings.

At wedding receptions in newly opened grand, modern hotels, all kinds of European food, cakes, ice-creams, drinks, dinners with exotic dishes are special treats for guests. As the rich get richer, and the poor, poorer there is a new class of elites who thrive on expensive imported food. But out in the villages where the majority of the people live Myanmar traditional food has not changed much. ◉



The first international Irrawaddy Literary festival will take place at the Inya Lake Hotel.

FROM 1-3 FEBRUARY 2013.

The patron of the event, Daw Aung San Suu Kyi, said: "I am delighted to lend my support and personal participation to this first Irrawaddy Literary Festival. Literature has always been a big part of my life and I hope this festival will encourage more people to explore the world of literature and further their understanding of the English language."

The Festival is pleased to announce the presentation of the inaugural Yoma FMI Short Story Prize. The competition is now open. We invite stories from any student aged up to 25 years. Interested students should submit a fictional story based on the theme of 'Changing Lives', not exceeding 2,000 words. There will be two awards of \$1,000 – one for the best story written in English, one for the best story written in Burmese/Myanmar. Please send your entry to: info@irrawaddyliitfest.com by Friday 18 January 2013.

The prize is the initiative of Yoma Strategic Holdings and First Myanmar Investment Co Ltd, one of the Irrawaddy Literary Festival's sponsors along with Myint & Associates Co Ltd, the British Embassy and the British Council. TODAY Media Group, Monument Books and Myanmar Book Centre are also supporting the festival.

The Orwell Prize is lending valuable support with its 'Buy a book for Burma' appeal on their website: www.theorwellprize.co.uk

Festival tickets will be on sale from 7 January 2013 at the Inya Lake Hotel, the British Council and Today Bookstores. For further details please check the festival website: www.irrawaddyliitfest.com.

SPONSORED BY

