



Ross Dunkley of MCM and Serge Pun of SPA

Kenneth Stevens of Leopard Capital and Romain Callaud of Vriens & Partners

Dr. Ninnual Piewthongngam of University of Thai Chamber of Commerce

Zau Man Lahtaw of Myanmar Seilone Co., Ltd. , and Songpol Chevapanyaroj of Kasikornbank



Peter Ryder

Gregory Miller of Asia-Pacific Link and Nicolas C. Ashbs Celadon Capital (Malaysia) Sdn Bhd.

Attendes at the forum

Irma Sati, Amit Koirala and Muaz of Standard Chartered



Lin Lin Than and Sermsook Patmastana of Standard Chartered

Georgenoel Clarke and Sundeep Ahuja

Philipp Hoffmann of JJ-Pun(S) Pte Ltd and Alexander Krefft Eingrad Ventures Pte. Ltd

Stephen Wilford of Control Risks, Mai of SPA and Jake Boswell of Control Risks



Minister Dr Mg Maung Thein

Wacharaporn and Budsaba of Bangkok Bank

Two attendees at the forum



Alyor Khasanov and Ulugbek Azamov of Silk Road Finance

Dr Sai San Htun

Thu Thu Khin and Sein Ban of YOMA

MPRL E&P Group is today a world-class oil exploration & production firm

www.myintassociales.com





Aye Aye Thant of U Thant Institute and attendees

Nigel Blackwood and Joy Moors



Alisa Kolesnikova of Eurasia

Khine Su Yin and Hnin Wut Yee of MCM

Henry Cox of Andaman Capital Partners



Matthew Kirkby of CIMB, Aman Lakhane of Abraaj Capital, Kenneth Ng of NTAsset



U Aung Soe Tha and Frank O'carroll of Digicel Group



Anh, Vo Xuan Hong and Phuong Nguyen of Cevision, Tran Hung Thien of Gcomm Vietnam JSC, Cao Thang Hoang of KHM Capital, Le Minh Man of AIA(Vietnam) Life Insurance Co.,Ltd

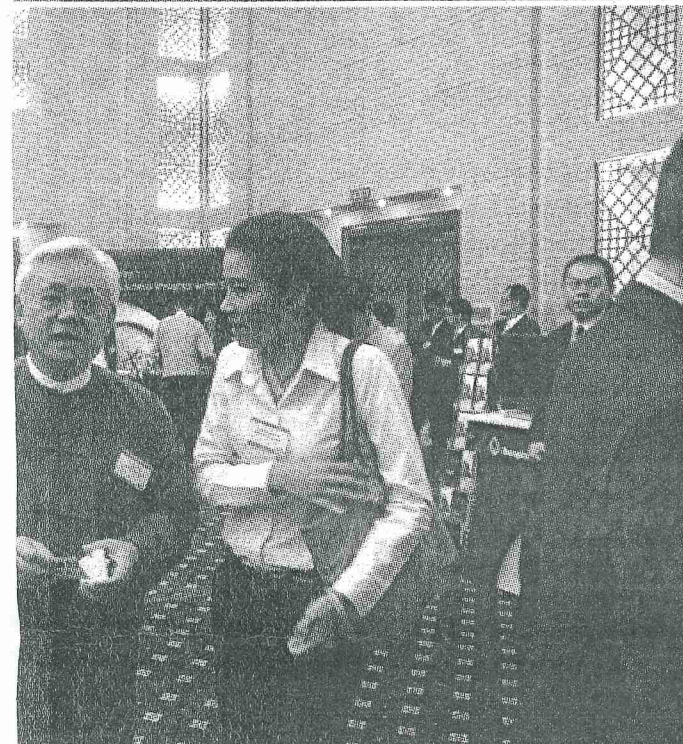


Sann Linn of UMFCCI, Thein Han of Shwe Peanut Oil and Sesame Oil, Taung Han of CB Bank

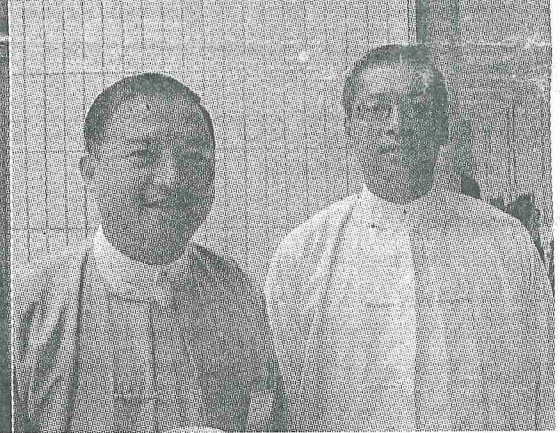


Makwan Chailertborisuth and Harinn S.Naring

Gill Pattison of River Gallery



Dr. Arak Sutivong, Grish Attagrish and Manop Sangiambut of SCB and Khin Thandar Htay



Sit Thway Aung of Suntac Int'l Trading Co., Ltd and Tha Kaung of Sunday Group Construction Co., Ltd



Ivan Pan of YOMA

Ross Dunkley and two attendees



Makoto Owada of Sumitomo Mitsui Banking Corporation and Ritsuo Fukadai of Bank of Tokyo-Mitsubishi UFJ

Truly home grown.

Able to hold its head high.

www.mprilexp.com