



GALAXY

TOWERS at STAR CITY

INTRODUCING
THE BRIGHTEST NEW STAR
ON THE HORIZON.

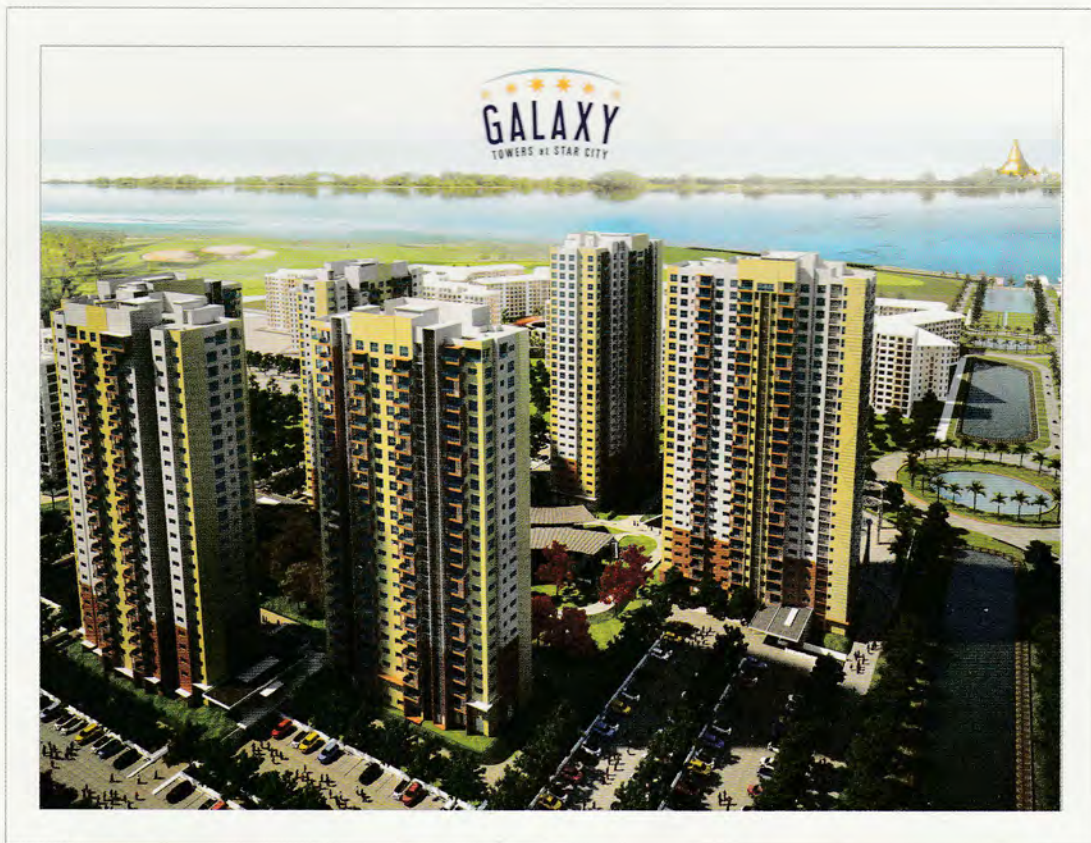


A NEW STAR IS BORN.

Over the past four years, STAR*CITY has evolved into Myanmar's premier lifestyle community where residents enjoy living surrounded by a clean, green environment, overlooking the Golf course, Shwedagon Pagoda and Yangon Skyline along with an incredible range of amenities.

This visionary project was planned, developed and built by the YOMA-SPA-FMI Group of Companies. For the past 21 years YOMA have been committed to providing the ultimate in quality and customer service to thousands of satisfied Myanmar homebuyers.

Zone A and B of STAR*CITY were only the beginning. Now, Galaxy Towers is on the horizon. This spectacular new, master planned residential community will take luxury living to the next level and create a whole new city you will proudly call your home!





BAGO RIVER

**FUTURE
RIGHT BANK
PROJECT**

**LOCAL
SCHOOL
(2017)**

**LOCAL
SCHOOL**

ZONE A

STAR★CITY

AMENITIES BUILDING

ZONE B

ZONE C

GALAXY
TOWERS BY STAR CITY

**FUTURE
ZONE D**

**PUN HLAING - LINKS
GOLF COURSE**

**INTERNATIONAL COLLEGE
(SUMMER 2016)**

GALAXY TOWERS SITE PLAN.

An impressive vision for the future.

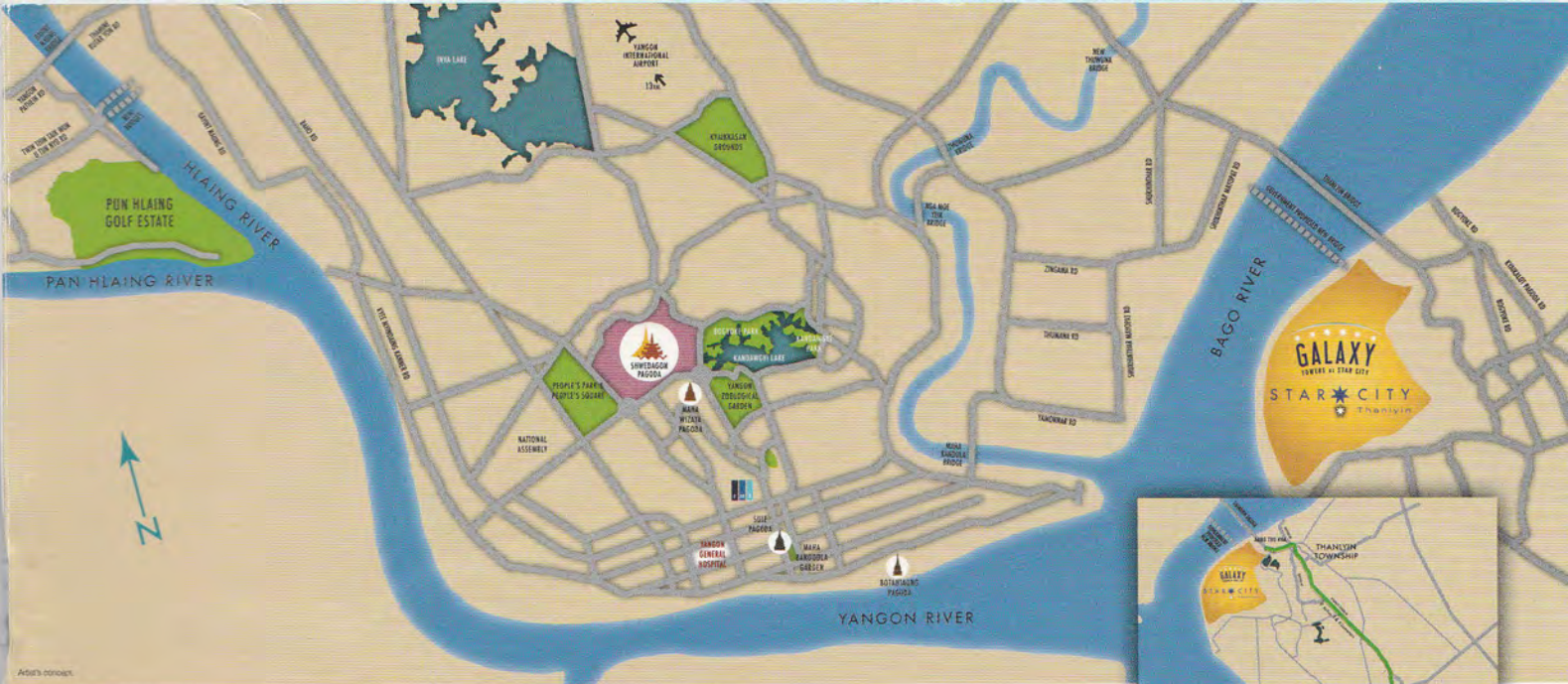


Galaxy Towers will be comprised of six contemporary buildings that reach for the stars.

Among the tallest, two towers are 28 storeys in height and four are 25-storeys.

You can enjoy spectacular river, garden, clubhouse, courtyard, swimming pool or great pagoda views in these modern, affordable and value orientated residences.

It's a dream that you can make come true for your family today!



THE BEST OF THANLYIN AND YANGON - ONLY A 25 MINUTE DRIVE TO DOWNTOWN.

STAR CITY and Galaxy Towers are located just a 5-10 minute drive to the Thanlyin Town Center where residents can shop and dine in traditional Myanmar style. The Thilawa Special Economic Zone is only 20 minutes (14 km) away. Yangon's City Centre is 25 minutes (15 km), and the Yangon International Airport is 45 minutes (18 km) away.

There is a daily shuttle service between STAR CITY and downtown Yangon with convenient departure and arrival times. Average travel time is just 35 minutes.

In addition, a new ferry service is planned with service connection STAR CITY's Quayside Jetty with Yangon's Central Business District.

MODEL SHOW SUITES ARE
AVAILABLE FOR VIEWING



VISIT US: WWW.GalaxyTowersYangon.com

GALAXY

TOWERS at STAR CITY



A NEW BRITISH-INTERNATIONAL SCHOOL CAMPUS.

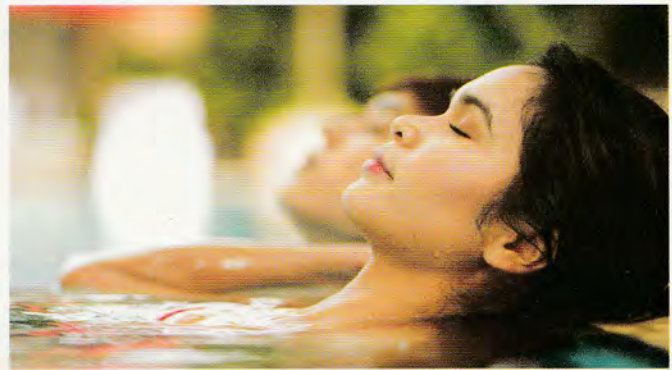
Located in the heart of STAR*CITY, an acclaimed International School by British College Yangon, "DULWICH College International" * will be a fully equipped, ultra-modern facility dedicated to upholding the highest British educational standards. It will inspire 1,500 students from age 2 to 18 years of age to realize their potential through a challenging curriculum that is both broad and balanced. Owners and residents of STAR*CITY - Galaxy Towers have this amazing opportunity for their children's future, virtually right at their doorsteps.



*Management of the School is overseen by Dulwich College international in London as educational adviser.

THE CLUBHOUSE HAS SOMETHING FOR EVERYONE

UPPER GROUND FLOOR



The clubhouse, scheduled to be fully operational upon completion of all 6 towers will provide you with top of the line facilities. You can work out with free weights and the latest cardio equipment or do some laps in the pool. You can even treat yourself to a special day of pampering The Spa. Afterwards, lounge on the sun deck, dine al fresco, or enjoy the exceptional views from the Rooftop bar.

Children will especially love The Kids' Club, where they can get involved in a variety of activities before checking out the playground or splashing in The Kids' Pool.

OUR AMBITION - YOUR DREAM PIPED LPG GAS DIRECT TO YOUR HOME!



In our efforts to lead, raise the benchmark and deliver the best to FMI-YOMA home purchasers, we plan for Galaxy Tower to directly connect piped Gas lines to your kitchen cooktops from secure bulk tanks and supply gas-heated water to your bathrooms.

Leading experienced Japanese contractors have prepared plans for full installation of the underground infrastructure and piping connections to your home. A leading Myanmar gas supplier stands ready to directly deliver on a scheduled basis. You should have individually metered supply invoiced monthly.

*These plans are subject to approval by all relevant authorities, subject to contract and may change without notice.

A DREAM THAT YOU CAN MAKE COME TRUE
FOR YOUR FAMILY TODAY!



Star City, Sales Gallery

Kyaik Khauk Pagoda Road,
Thanlyin Township, Yangon, Myanmar.
Hotline: +95-9-73119511, +95-9-2525 85874
Tel: +95 56-23150~3 Ext: 1112 / 1118 / 1119 / 1120
E-mail: sc.marketing@spa-mm.com

Singapore Sales Office

#04-39 Peninsula Plaza
111 North Bridge Road S179098
Sales Hotline: 9673 6731
Sales Office : 6338 0900
E-mail: condosales_myanmar@yomastrategic.com

A Quality Project of



GalaxyTowersYangon.com

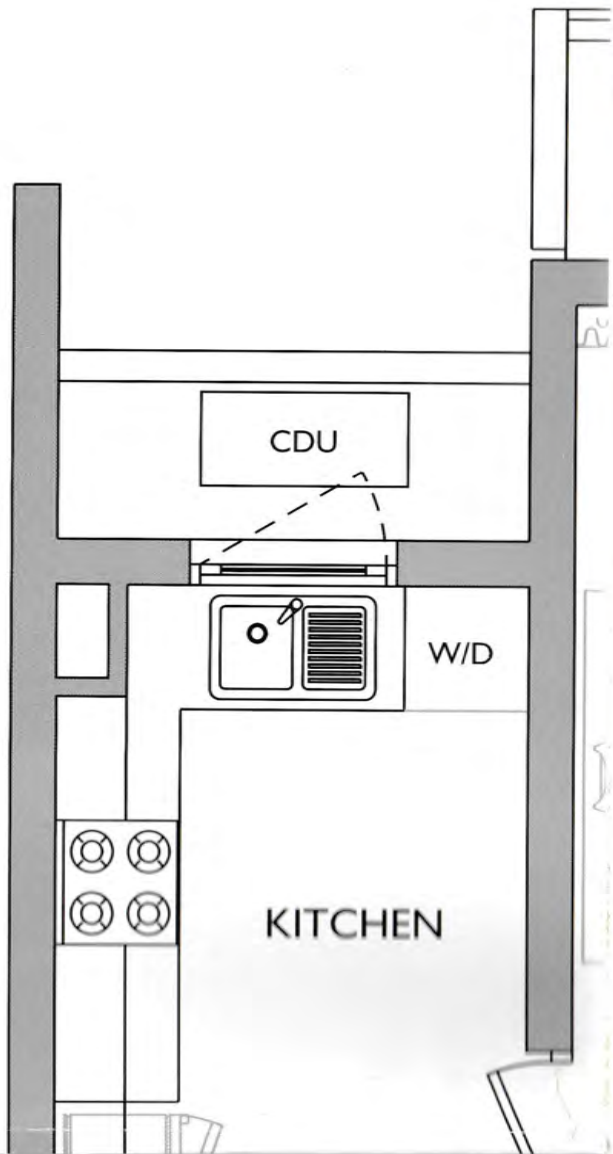
1 BEDROOM

TYPE A

728
SQ. FT.

INTERNAL
676 SQ. FT.

EXTERNAL
52 SQ. FT.



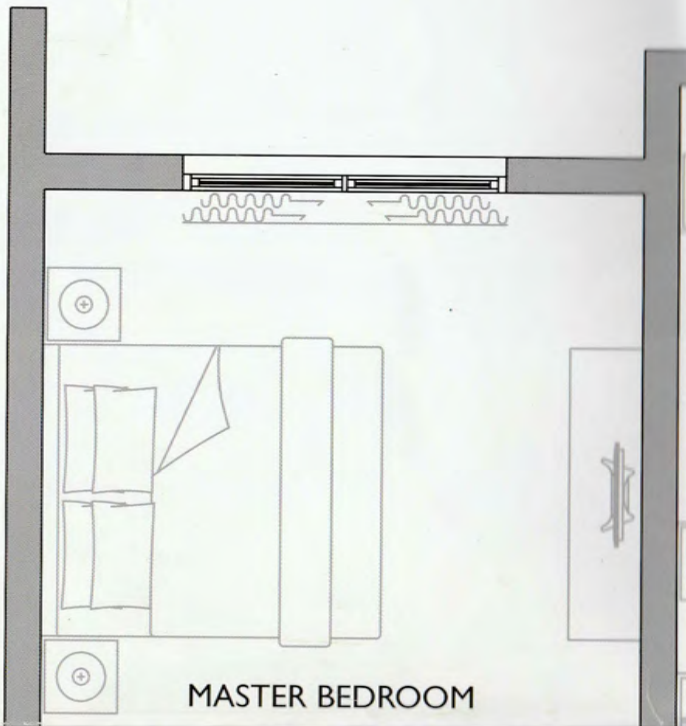
2 BEDROOM

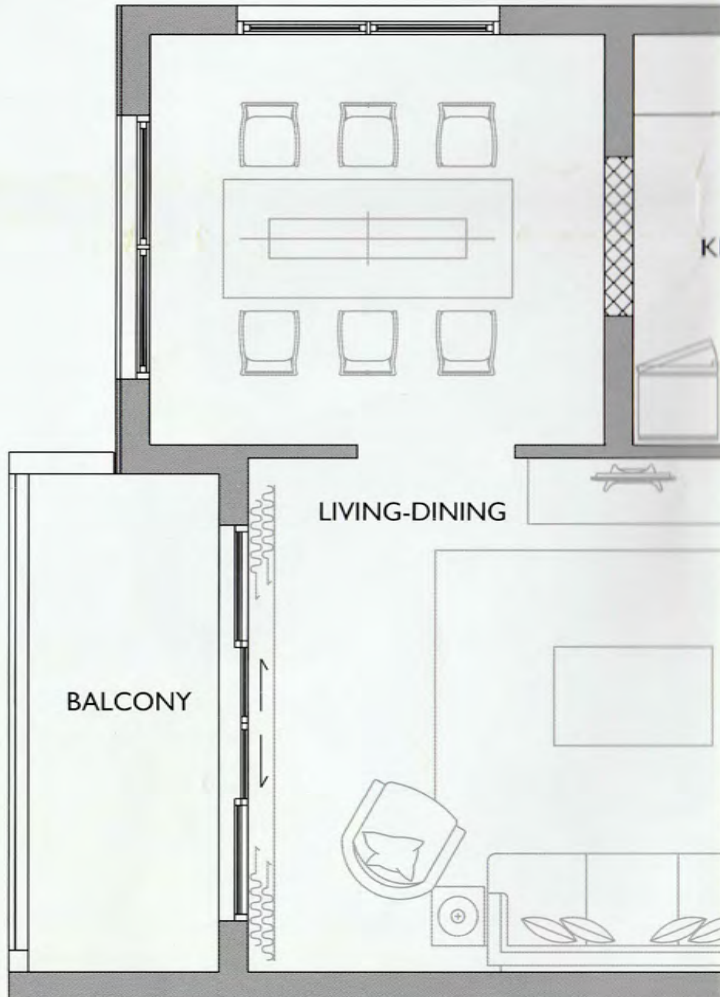
TYPE K

1,077
SQ. FT.

INTERNAL
1,025 SQ. FT.

EXTERNAL
52 SQ. FT.





3 BEDROOM

TYPE N

1,583
SQ. FT.

INTERNAL
1,515 SQ. FT.

EXTERNAL
68 SQ. FT.

